

Section I - Admission and Financial Aid

Figure I-A:

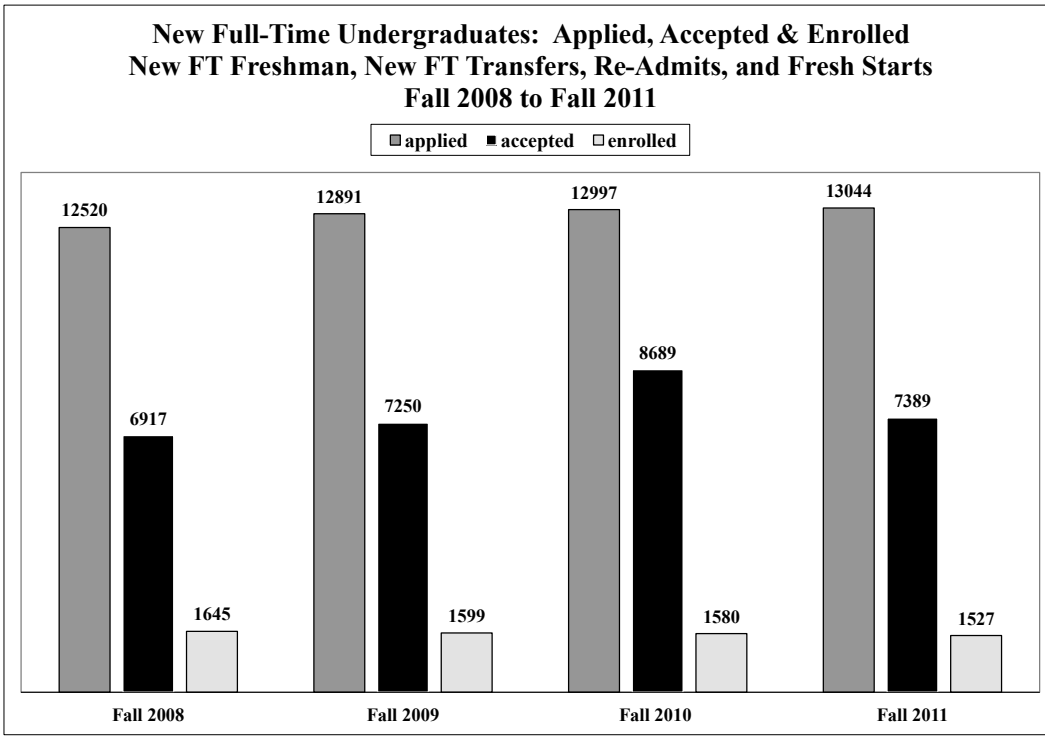


Figure I-B:

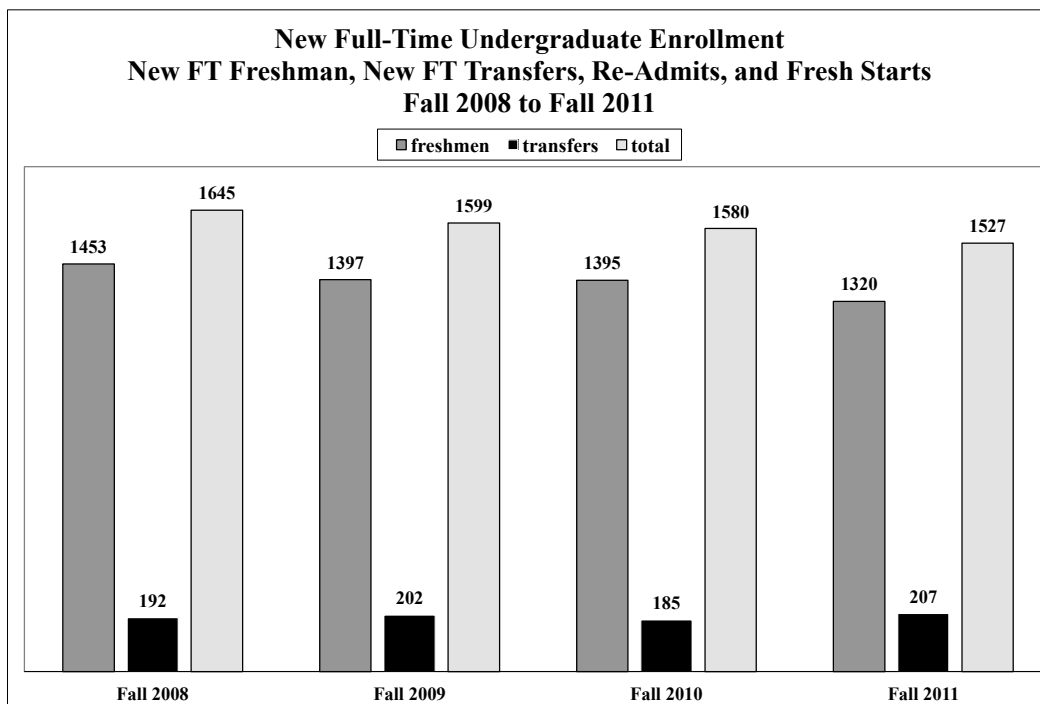


Figure I-C:

New Full-Time Undergraduate Matriculants By College, Fall 2007 to Fall 2011					
College	2007	2008	2009	2010	2011
Hartford Art School	110	110	101	93	76
College of Arts & Sciences	390	403	407	406	357
Barney School of Business	175	179	165	150	160
Hillyer College	332	374	329	243	294
College of Educ., Nursing & HP	221	193	191	241	210
College of Engrg., Techn., & Architecture	240	229	239	240	240
The Hartt School	173	146	145	180	187
University Studies	12	11	9	13	2
Undecided	0	0	13	14	1
Total	1,653	1,645	1,599	1,580	1,527

Figure I-D:

Geographic Distribution of New Full-Time Freshman Fall 2007 to Fall 2011					
Origin*	2007	2008	2009	2010	2011
Connecticut	387	424	461	462	460
New York	374	361	359	324	311
Massachusetts	235	220	195	218	199
New Jersey	201	191	162	139	166
Pennsylvania	49	38	21	38	32
New Hampshire	52	39	34	27	23
California	22	37	29	21	13
Maryland	12	24	16	18	13
Other New England States	18	18	16	31	28
Other States	68	60	68	58	80
* Includes U.S. Citizens Only					

Figure I-E:

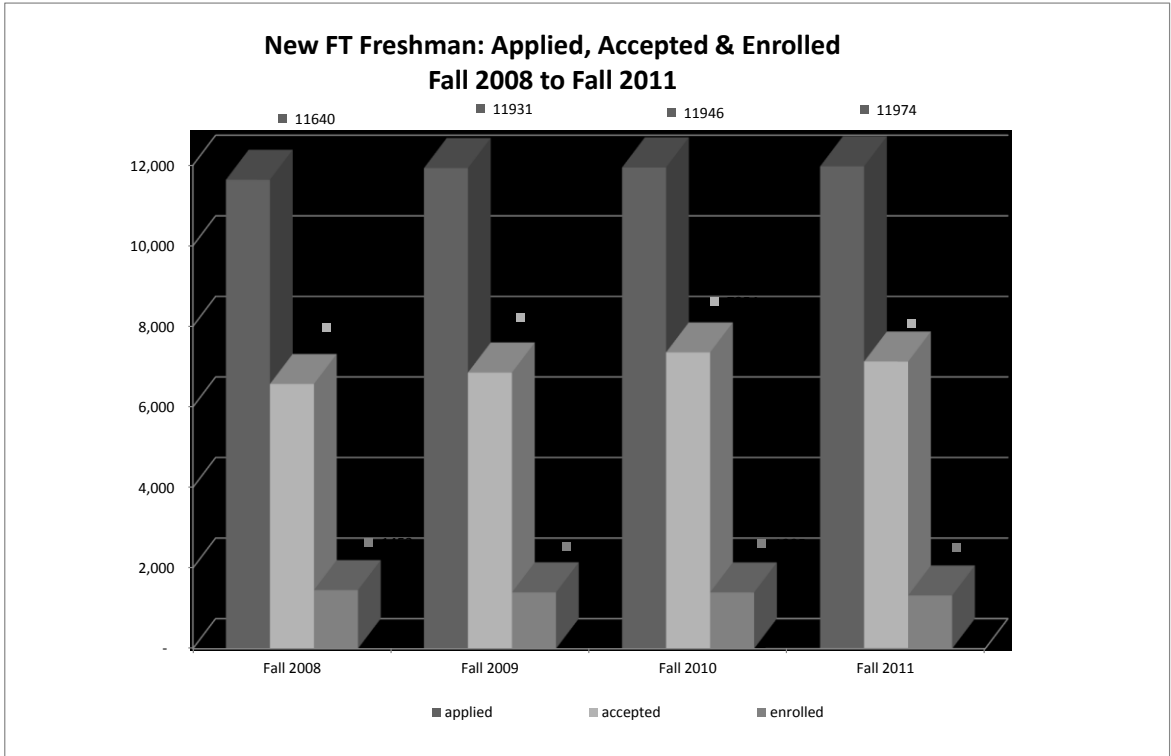


Figure I-F:

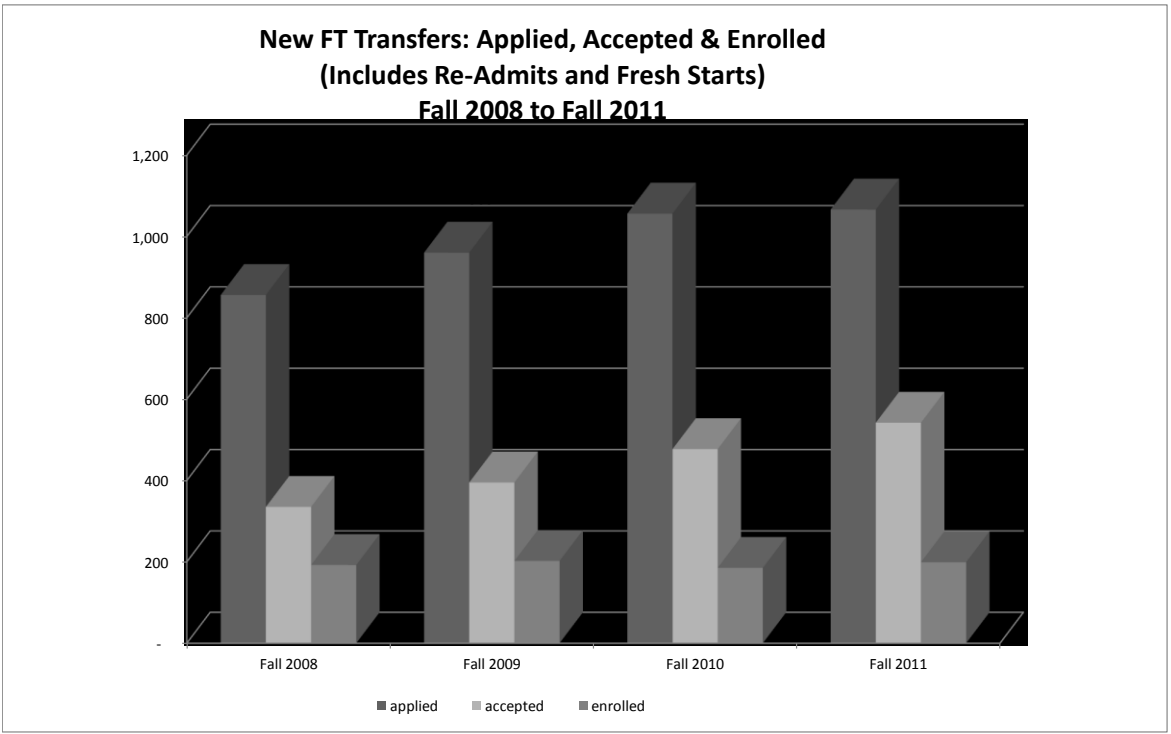


Figure I-G:

Headcount Enrollment Fall Term Census					
Full-time Undergraduates: New and Returning					
2007 to 2011					
	2007	2008	2009	2010	2011
New Students	1653	1645	1599	1580	1527
Freshman	1458	1453	1397	1395	1320
Transfers	195	192	202	185	207
Returning Students	3143	3218	3098	3114	3069
All FT Undergraduates	4796	4842	4697	4694	4596

Figure I-H:

Freshman Combined S.A.T.					
Program/College	2007	2008	2009	2010	2011
<i>National Average</i>	<i>1,017</i>	<i>1,017</i>	<i>1,016</i>	<i>1,017</i>	<i>1,011</i>
All Programs	1,027	1,017	1,012	1,015	1,015
Four Year Programs	1,067	1,062	1,059	1,051	1,061
Hartford Art School	1,027	1,045	1,026	1,035	1,038
College of Arts and Sciences	1,066	1,052	1,054	1,044	1,049
Barney School of Business	1,054	1,040	1,056	1,058	1,059
Education, Nursing, HP	1,044	1,039	1,050	1,042	1,038
College of Engrg, Techn & Arch	1,062	1,076	1,059	1,053	1,064
The Hartt School	1,134	1,111	1,110	1,117	1,117
University Studies	1,079	1,079	1,055	1,055	1,140
Two Year Program	893	889	856	861	861
Hillyer College	893	889	856	861	861

Figure I-I:

Freshman Verbal S.A.T.					
Program/College	2007	2008	2009	2010	2011
<i>National Average</i>	502	502	501	501	497
All Programs	510	504	503	503	504
Four Year Programs	530	525	524	521	525
Hartford Art School	521	524	520	527	529
College of Arts and Sciences	537	528	527	521	528
Barney School of Business	514	503	518	512	511
Education, Nursing, HP	515	513	521	513	510
College of Engrg, Techn & Arch	507	518	506	501	509
The Hartt School	573	561	561	563	567
University Studies	539	517	528	495	540
Two Year Program	449	444	433	421	435
Hillyer College	449	444	433	421	435

Figure I-J:

Freshman Math S.A.T.					
Program/College	2007	2008	2009	2010	2011
<i>National Average</i>	515	515	515	516	514
All Programs	517	513	509	512	511
Four Year Programs	537	537	535	530	536
Hartford Art School	506	521	506	515	509
College of Arts and Sciences	529	524	527	517	521
Barney School of Business	540	537	538	540	548
Education, Nursing, HP	529	526	529	521	528
College of Engrg, Techn & Arch	555	558	553	547	555
The Hartt School	561	550	549	556	550
University Studies	540	562	527	527	600
Two Year Program	444	445	423	428	426
Hillyer College	444	445	423	428	426

Figure I-K

Comparisons By SAT Overlap - Public/Private Institutions													
<i>Private Institutions</i> Name of Institution	State	Shared Prospective Applicants	Tuition, Fees, Room and Board			Tuition, Fees, Room and Board			Full-time Undergraduate Enrollment			2010/11	2010/11
			Out of State		Percent Change	In State		2008	2009	2010	SAT-ACT 25-75th Percentile	Accept. Rate (Percent)	
			10-11	11-12		10-11	11-12						
University of Hartford	CT		41424	42674	3.0	41424	42674	4842	4697	4694	900 - 1130	61.6%	
Quinnipiac University	CT	1054	46980	49560	5.5	44780	49560	5558	5686	5859	1120 - 1230	60.0	
University of New Haven	CT	917	43528	44950	3.3	43528	44950	3079	3540	3642	950 - 1150	62.0	
Northeastern University	MA	633	49552	51472	3.9	46860	51472	12560	12829	12838	1230 - 1390	38.0	
Hofstra University	NY	624	41460	45490	9.7	41460	45490	7631	7327	6804	1070 - 1250	58.7	
Ithaca College	NY	611	45944	48132	4.8	43840	48132	5951	6370	6333	1060 - 1270	69.0	
Drexel University	PA	573	46130	47935	3.9	44515	47935	8569	8930	9392	1110 - 1310	55.7	
Roger Williams University	RI	509	42428	44128	4.0	42428	44128	3771	3662	3658	990 - 1160	78.8	
Syracuse University	NY	473	49152	50921	3.6	47300	50921	12981	13040	13504	1060 - 1270	59.7	
Boston University	MA	462	52124	54528	4.6	50288	54528	17013	18283	17266	1180 - 1370	60.0	
Sacred Heart University	CT	419	43850	45375	3.5	42429	45375	3520	3534	3511	970 - 1140	64.0	
New York University	NY	383	52845	53836	1.9	51982	53836	19842	20281	20815	1240 - 1450	38.1	
St. Johns University	NY	368	45880	48475	5.7	43180	48475	12029	11824	11803	970 - 1210	45.5	
Fordham University	NY	330	52768	54893	4.0	52768	54893	7359	7370	7601	1160 - 1340	50.6	
Public Institutions													
University of Hartford	CT		41424	42674	3.0	41424	42674	4842	4796	4694	900 - 1130	61.6%	
University of Connecticut	CT	1452	37662	38616	2.5	21198	21720	15615	16083	16628	1130 - 1310	54.0%	
University of Rhode Island	RI	1015	38036	39942	5.0	21330	23854	10861	11210	11556	940 - 1140	77.7%	
Univ. of Massachusetts-Amherst	MA	973	28769	34912	21.4	20546	22124	18646	18996	19821	1060 - 1260	67.6%	
Central Ct. State University	CT	871	26434	27047	2.3	17437	17825	7658	7785	7925	930 - 1110	60.1%	
Pennsylvania State Univ.-Univ. Park	PA	526	36144	36626	1.3	24280	24544	35447	36749	37347	1090 - 1300	54.8%	
Southern Ct. State University	CT	520	26985	29104	7.9	17988	18480	7114	7173	7494	850 - 1060	70.4%	
Rutgers-New Brunswick	NJ	515	35260	36679	4.0	23798	24017	24876	26434	28904	1080 - 1310	59.1%	
University at Albany - SUNY	NY	446	25873	27850	7.6	17463	18130	11959	12389	12139	1030 - 1200	47.1%	
Univ. of New Hampshire-Durham	NH	435	36697	38022	3.6	22727	24052	11467	11659	11960	1020 - 1220	73.3%	
SUNY - Stony Brook	NY	388	24548	25944	5.7	16648	17534	14339	14735	15014	1110 - 1310	41.0%	
Purchase College - SUNY	NY	376	24645	25560	3.7	16745	17150	3654	3661	3683	990 - 1200	31.0%	
Eastern Ct. State University	CT	362	27735	27993	0.9	18438	18771	3975	4123	4416	950 - 1150	64.5%	
Temple University	PA	361	31802	33332	4.8	21974	23506	22306	23019	24644	1010 - 1210	64.6%	
University of Vermont	VT	361	42222	44132	4.5	23514	24492	9299	9723	10317	1085 - 1280	70.5%	
SUNY - New Paltz	NY	359	23821	25542	7.2	15921	16492	5364	5750	6073	1050 - 1220	37.4%	
Western CT State University	CT	358	26875	27747	3.2	17879	18525	4375	4599	4905	900 - 1080	63.3%	
SUNY College Oneonta	NY	352	23300	23990	3.0	13716	15580	5541	5428	5716	1060 - 1220	41.0%	
Montclair State University	NJ	343	31110	34039	9.4	22779	25031	10880	11604	12271	920 - 1100	49.7%	
University of Massachusetts-Dartmouth	MA	342	27657	32121	16.1	20975	21304	7023	7068	6838	940 - 1150	71.1%	
University of Massachusetts-Lowell	MA	332	26686	33256	24.6	19573	20817	6771	7559	8133	980 - 1190	73.5%	
State Univ. of NY Binghamton	NY	330	25961	27234	4.9	18061	18824	11393	11279	11381	1200 - 1370	40.0%	

Data from U.S. News & World Report, current edition, "America's Best Colleges"; IPEDS Submissions; "College Board" and Institutional websites.

Figure I-L

UofH-Accepted Freshmen Attending Competitor Institutions													
<i>Private Institutions</i>	State	Accepted UofH, Enrolled		Tuition, Fees, Room & Board Current		Percent Change	Tuition, Fees, Room & Board Prior		FT Undergraduate Fall Enrollment			2010/10 SAT-ACT 25-75th Percentile	2010/11 Accept. Rate (Percent)
		Elsewhere		10-11	11-12		09-10	10-11	2008	2009	2010		
University of Hartford	CT			41424	42674	3.0	40742	41424	4842	4697	4694	900 - 1130	61.6
1 Quinnipiac University	CT	139		46980	49560	5.5	44780	46980	5558	5686	5859	1120 - 1230	60.0
2 Syracuse University	NY	69		49152	50921	3.6	47300	49152	12981	13040	13504	1060 - 1270	59.7
3 Sacred Heart University	CT	61		43850	45375	3.5	42429	43850	3520	3534	3511	970 - 1140	64.0
4 Ithaca College	NY	61		45944	48132	4.8	43840	45944	5951	6370	6333	1060 - 1270	69.0
5 Hofstra University	NY	60		41460	45490	9.7	41460	41460	7631	7327	6804	1070 - 1250	58.7
6 Roger Williams University	RI	58		42428	44128	4.0	40990	42428	3771	3662	3658	990 - 1160	78.8
7 St. Johns University	NY	58		45880	48475	5.7	43180	45880	12029	11824	11803	970 - 1210	45.5
8 University of New Haven	CT	51		43528	44950	3.3	41842	43528	3079	3540	3642	950 - 1150	62.0
9 Western New England College	MA	39		41148	42576	3.5	39796	41148	2498	2463	2506	980 - 1170	80.6
10 Pace University	NY	39		45512	47342	4.0	44506	45512	6183	6498	6814	990 - 1180	78.6
11 Rider University	NJ	36		41670	43740	5.0	39780	41670	3958	4074	3994	950 - 1160	70.6
12 Northeastern University	MA	34		49552	51472	3.9	46860	49552	12560	12829	12838	1230 - 1390	38.0
13 Long Island University	NY	33		41190	43879	6.5	39314	41190	4369	4115	4053	880 - 1100	82.1
14 Rochester Institute of Technology	NY	33		40761	42450	4.1	38925	40761	12126	12367	12922	1090 - 1310	60.0
15 Iona College	NY	32		40650	42346	4.2	38800	40650	3329	3245	3156	1090 - 1290	60.2
16 Suffolk University	MA	32		43150	44518	3.2	41752	43150	5222	5291	5272	910 - 1130	84.4
17 Wentworth Institute of Technology	MA	32		33870	35330	4.3	32300	33870	3407	3253	3285	990 - 1180	58.4
18 Fairfield University	CT	27		50780	52790	4.0	48760	50780	3469	3320	3388	1070 - 1250	71.5
19 Boston University	MA	27		52124	54528	4.6	50288	52124	17013	18283	17266	1180 - 1370	60.0
20 Springfield College	MA	26		37500	40940	9.2	36326	37500	4481	4512	3270	920 - 1130	69.4
21 Drexel University	PA	26		46130	47935	3.9	44515	46130	8569	8930	9392	1110 - 1310	55.7
22 Adelphi University	NY	24		38400	39880	3.9	33929	38400	4229	4300	4335	980 - 1170	69.6
23 Southern New Hampshire University	NH	24		36618	37818	3.3	36618	36618	1995	1896	2226	870 - 1080	92.6
24 New York University	NY	23		51993	53592	3.1	50282	51993	19842	20281	20815	1240 - 1450	38.1
25 Bryant University	RI	22		45572	47203	3.6	42258	45572	3347	3254	3225	1040 - 1220	69.1

Institutions from National Student Clearinghouse; All other data from U.S. News, current edition, "America's Best Colleges"; IPEDS data; Institutional websites.

Figure I-M

UofH-Accepted Freshmen Attending Competitor Institutions													
Public Institutions	State	Accepted	Tuition, Fees,		Percent	Tuition, Fees,		FT Undergraduate			2010/11		2010/11
		UofH, Enrolled	Room & Board	Out of State		Room & Board	In State	Fall Enrollment	SAT-ACT	25-75th	Accept.		
		Elsewhere	10-11	11-12	Change	10-11	11-12	2008	2009	2010	Percentile	Rate	(Percent)
University of Hartford	CT		41424	42674	3.0	41424	42674	4796	4842	4694	900	- 1130	61.6%
1 University of Connecticut	CT	302	37662	38616	2.5	21198	21720	15615	16083	16628	1130	- 1310	54.0%
2 Central Ct. State University	CT	127	26434	27047	2.3	17437	17825	7658	7785	7925	930	- 1110	60.1%
3 University of Rhode Island	RI	110	38036	39942	5.0	21330	23854	10861	11210	11556	940	- 1140	77.7%
4 Univ. of Massachusetts-Amherst	MA	103	28769	34912	21.4	20546	22124	18646	18996	19821	1060	- 1260	67.6%
5 Pennsylvania State Univ.-Univ. Park	PA	82	36144	36626	1.3	24280	24544	35447	36749	37347	1090	- 1300	54.8%
6 Eastern CT State University	CT	70	27735	27993	0.9	18438	18771	3975	4123	4416	950	- 1150	64.5%
7 Southern CT State University	CT	65	26985	29104	7.9	17988	18480	7114	7173	7494	850	- 1060	70.4%
8 Univ. of New Hampshire-Durham	NH	63	36697	38022	3.6	22727	24052	11467	11659	11960	1020	- 1220	73.3%
9 University at Albany-SUNY	NY	61	25873	27850	7.6	17463	18130	11959	12389	12139	1030	- 1200	47.1%
10 Western CT State University	CT	53	26875	27747	3.2	17879	18525	4375	4599	4905	900	- 1080	63.3%
11 Univ. of Massachusetts-Dartmouth	MA	51	27657	32121	16.1	20975	21304	6848	7023	6838	940	- 1150	71.1%
12 Univ. of Massachusetts-Lowell	MA	50	26686	33256	24.6	19573	20817	6001	6771	8133	980	- 1190	73.5%
13 Rutgers-New Brunswick	NJ	48	35260	36679	4.0	23798	24017	24876	26434	28904	1080	- 1310	59.1%
14 Towson University	MD	48	28728	29502	2.7	17270	18017	14180	15231	15560	990	- 1160	57.0%
15 Temple University	PA	46	31802	33332	4.8	21974	23506	22306	23019	24644	1010	- 1210	64.6%
16 University at Buffalo-SUNY	NY	39	25336	26708	5.4	17436	18298	17780	17966	17980	1050	- 1260	51.4%
17 Keene State	NH	38	25948	26980	4.0	17778	18810	4759	4890	4904	900	- 1100	70.3%
18 SUNY New Paltz	NY	37	23183	23821	2.8	15283	15921	5750	5935	6073	1050	- 1220	37.4%
19 Binghamton University-SUNY	NY	37	25961	27234	4.9	18061	18824	11042	11393	11381	1200	- 1370	40.0%
20 West Virginia University	WV	32	23930	26248	9.7	12832	14078	20533	20260	20809	21	- 26	86.1%
21 Montclair State University	NJ	31	31110	34039	9.4	22779	25031	10880	11604	12271	920	- 1100	49.7%
22 William Patterson	NJ	31	27872	28642	2.8	21118	21618	7241	7768	8333	900	- 1075	63.3%
23 SUNY Purchase	NY	28	24645	25560	3.7	16745	17150	3661	3698	3686	990	- 1200	30.9%

Institutions from National Student Clearinghouse; All other data from U.S.News & World Report, current edition, "America's Best Colleges"; IPEDS data; Institutional websites.
All other Schools Acceptance Rate = UGAccepted/UGApplied.

Figure I-N:

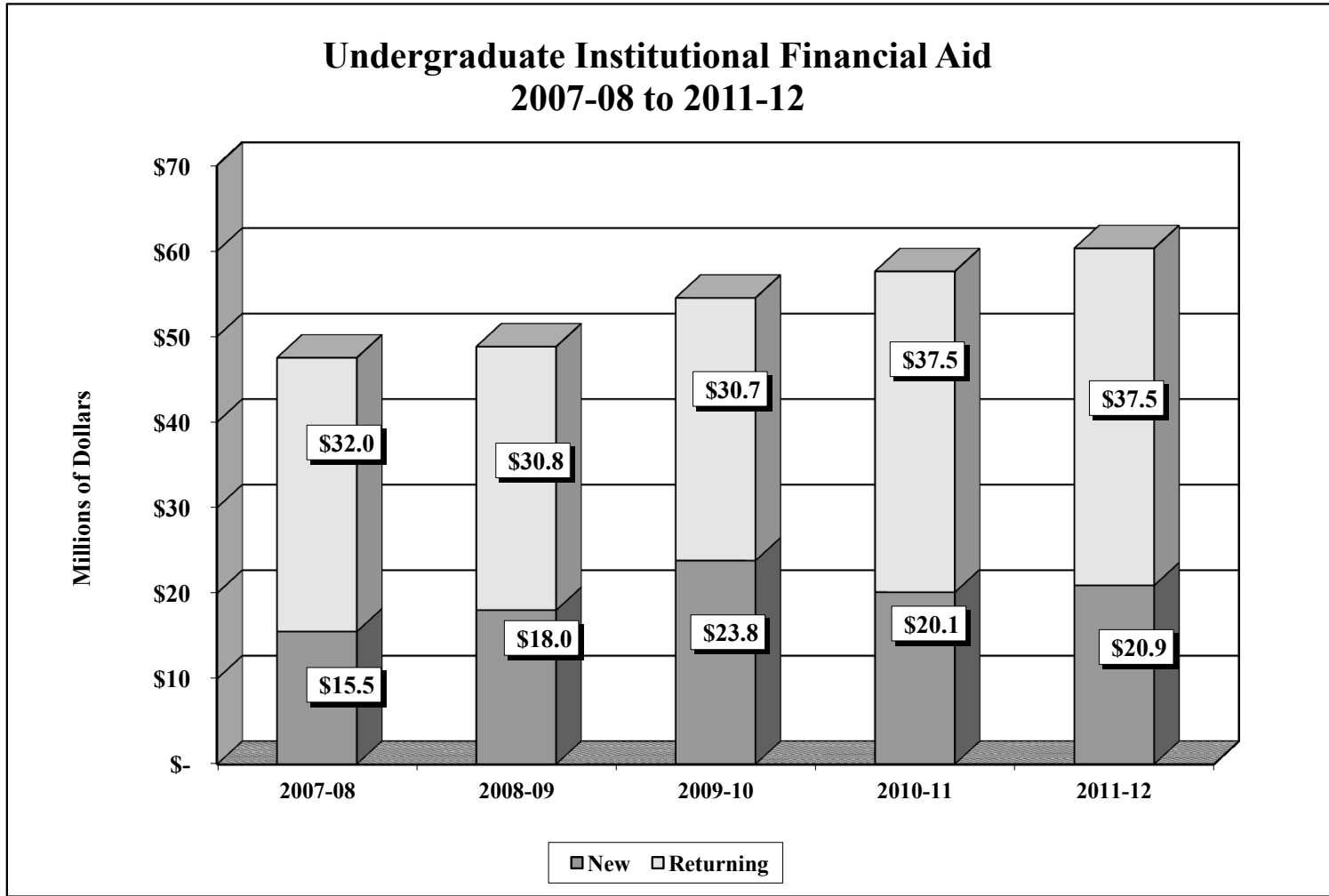
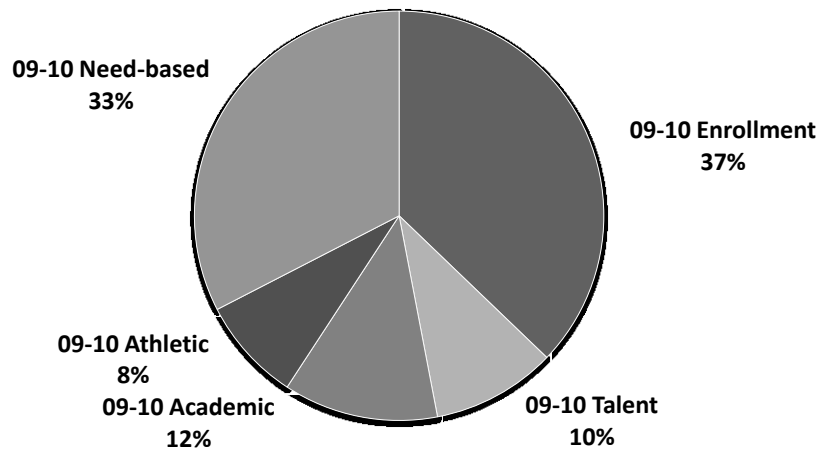


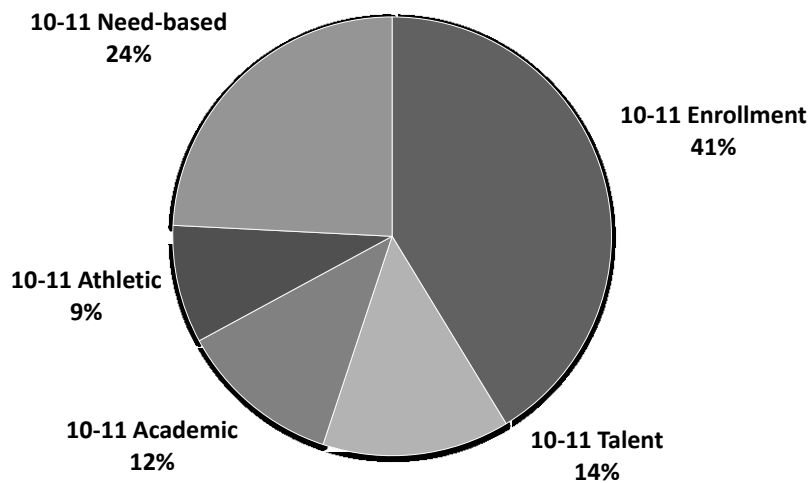
Figure I-O:

Institutional Aid Distribution

2009-10: \$55.1 Million



2010-11: \$57.6 Million



2011-12: \$58.4 Million

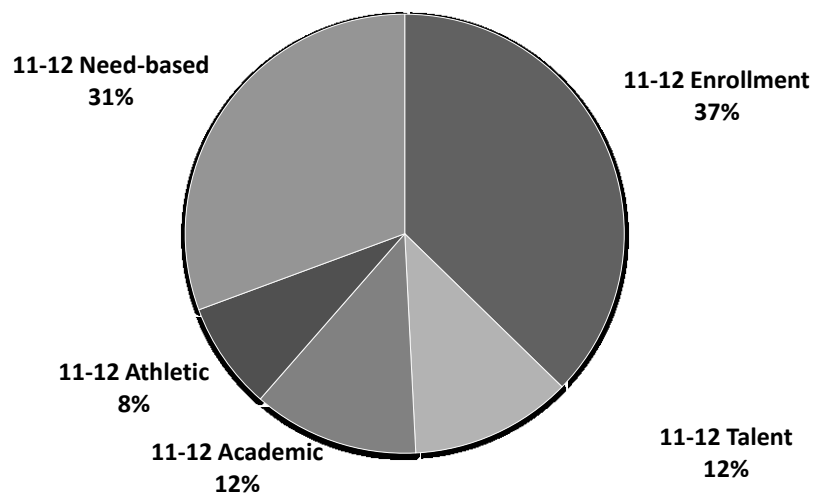


Figure I-P:

Institutional Financial Aid By Type and Family Income Level, 2011-12						
Type of Aid						
Income Level (\$'s)	Enrollment	Talent	Academic	Athletic	Need Based	Total
0 to 1000	\$ 1,630,733	\$ 346,914	\$ 237,400	\$ 125,390	\$ 1,830,476	\$ 4,170,913
10001 to 20000	\$ 908,916	\$ 91,875	\$ 153,100	\$ 50,908	\$ 1,014,425	\$ 2,219,224
20001 to 30000	\$ 1,358,506	\$ 244,000	\$ 245,850	\$ 133,266	\$ 1,268,075	\$ 3,249,697
30001 to 40000	\$ 1,092,232	\$ 396,582	\$ 288,300	\$ 209,105	\$ 1,500,615	\$ 3,486,834
40001 to 50000	\$ 1,255,728	\$ 212,200	\$ 212,300	\$ 135,580	\$ 1,334,946	\$ 3,150,754
50001 to 60000	\$ 1,446,322	\$ 361,262	\$ 342,040	\$ 134,940	\$ 1,815,458	\$ 4,100,022
60001 to 70000	\$ 1,368,813	\$ 284,500	\$ 296,300	\$ 146,601	\$ 1,467,123	\$ 3,563,337
70001 to 80000	\$ 1,074,221	\$ 335,090	\$ 284,000	\$ 81,467	\$ 1,337,339	\$ 3,112,117
80001 or more includes Unknown	\$ 11,659,229	\$ 4,692,522	\$ 5,090,718	\$ 3,622,166	\$ 6,337,374	\$31,402,008
Total	\$ 21,794,700	\$ 6,964,945	\$ 7,150,008	\$ 4,639,422	\$ 17,905,830	\$58,454,905

Source: Institutional Research Banner Archives. Figures are as of this publication date.

Section II – Enrollment and Retention

During the last decade, a number of alternative course scheduling options were developed to better address the schedules of part-time, non-traditional age students including Winterterm's three-week courses, half-semester seven-week courses, and SaturdayTerm's ten-week courses rather than fifteen-week semester courses. Enrollment from these courses often is not captured at Fall or Spring census. This enrollment section, as a result, is divided in two parts:

IIA: Full Fiscal Year includes all courses that occur from the second Summerterm through the First Summerterm in the following Year, corresponding with the Financial Calendar. These instruments were developed to assist with planning for Student needs and Financial needs.

IIB: Fall semester enrollment includes students registered at census, the data most often reported to external agencies and media.

Figure II A-A:

Table #1:
Fiscal Year Enrollment Comparison by Time, Term, Student Level, and Status
Fiscal Year 2012 compared to Fiscal Year 2011

2011- Fall, Spring, Saturdayterms 1 & 3								2011-12	2010- Fall, Spring, Saturdayterms 1 & 3								2010-11	Net Change	
Undergraduate			Graduate			Total	Total	Undergraduate			Graduate			Total	Total	UG	GR		
Full	Part	Total	Full	Part	Total	Total	Full	Part	Total	Full	Part	Total	Total						
Total	4646	1030	5676	727	1140	1867	7543	4543	803	5346	664	1002	1665	7011	331	202			
2011- Winterterm & Saturday 2								2011-12	2010- Winterterm & Saturday 2								2010-11	Net Change	
Undergraduate			Graduate			Total	Total	Undergraduate			Graduate			Total	Total	UG	GR		
Full	Part	Total	Full	Part	Total	Total	Full	Part	Total	Full	Part	Total	Total						
Total	0	684	684	0	203	203	887	0	761	761	1	209	210	971	-77	-7			
2011- Summerterms & Saturday 4								2011-12	2010- Summerterms & Saturday 4								2010-11	Net Change	
Undergraduate			Graduate			Total	Total	Undergraduate			Graduate			Total	Total	UG	GR		
Full	Part	Total	Full	Part	Total	Total	Full	Part	Total	Full	Part	Total	Total						
Total	107	1117	1224	301	752	1053	2277	214	1849	2063	235	1439	1674	3737	-839	-621			
2011- Summary								2011-12	2010- Summary								2010-11	Net Change	
Undergraduate			Graduate			Total	Total	Undergraduate			Graduate			Total	Total	UG	GR		
Full	Part	Total	Full	Part	Total	Total	Full	Part	Total	Full	Part	Total	Total						
Total	4753	2831	7584	1028	2095	3123	10707	4757	3413	8170	900	2650	3549	11719	-586	-426			

Source: Institutional Research Banner Census Archives and Banner Registration Database. Figures are as of this publication date.

Figure IIA-B:

Table #2
ANALYSIS OF FULL-TIME EQUIVALENTS (FTE)
FULL FISCAL YEAR 2011-12 COMPARED TO 2010-11

FY 2011-12								FY 2010-11								Net Change FY 11 vs. FY 10 FTE
College	Undergraduate FTE			Graduate FTE			College FTE	College	Undergraduate FTE			Graduate FTE			College FTE	
	F	P	Total	F	P	Total			F	P	Total	F	P	Total		
ART	271	47	318	83	1	84	402	ART	334	33	367	88	2	90	458	-56
A&S	1118	208	1326	129	193	322	1648	A&S	1291	135	1426	185	647	832	2257	-609
BARNEY	518	110	628	111	398	509	1137	BARNEY	607	126	733	198	365	563	1296	-159
HILLYER	446	46	492	0	0	0	492	HILLYER	484	32	516	0	0	0	516	-24
ENHP	613	214	827	184	338	522	1349	ENHP	727	130	857	300	265	565	1421	-72
CETA	720	166	886	58	112	170	1056	CETA	829	115	944	65	46	111	1055	1
HARTT	553	57	610	198	56	254	864	HARTT	548	46	594	171	50	221	815	49
UNIV STUDIES	31	189	220	0	0	0	220	UNIV STUDIES	46	126	172	0	0	0	172	48
NON-MATRIC	52	476	528	20	332	352	880	NON-MATRIC	61	166	227	20	117	137	364	516
UNIVERSITY TOTAL	4322	1513	5835	783	1430	2213	8048	UNIVERSITY TOTAL	4927	909	5836	1027	1491	2519	8355	-307
CONSORTIUM	0	72	72	0	1	1	73	CONSORTIUM	0	25	25	0	0	0	25	48
Grand Total	4322	1585	5907	783	1431	2214	8121	Grand Total	4927	934	5861	1027	1491	2519	8380	-259

Source: Institutional Research Banner Archives and Banner Registration Data Base. Figures are as of this publication date.

Section II - Registration and Retention

Figure IIB-A:

Headcount Enrollment Fall Term Census By Level and Time Status 2007 to 2011					
	2007	2008	2009	2010	2011
Undergraduate					
Full-time	4,796	4,842	4,697	4,694	4,596
Part-time	841	853	819	804	754
Total Undergraduate	5,637	5,695	5,516	5,498	5,350
Graduate					
Full-time	539	579	677	700	727
Part-time	1,114	1,092	1,019	982	948
Total Graduate	1,653	1,671	1,696	1,682	1,675
All Students					
Full-time	5,335	5,421	5,374	5,394	5,323
Part-time	1,955	1,945	1,838	1,786	1,702
Total All Students	7,290	7,366	7,212	7,180	7,025

Figure IIB-B:

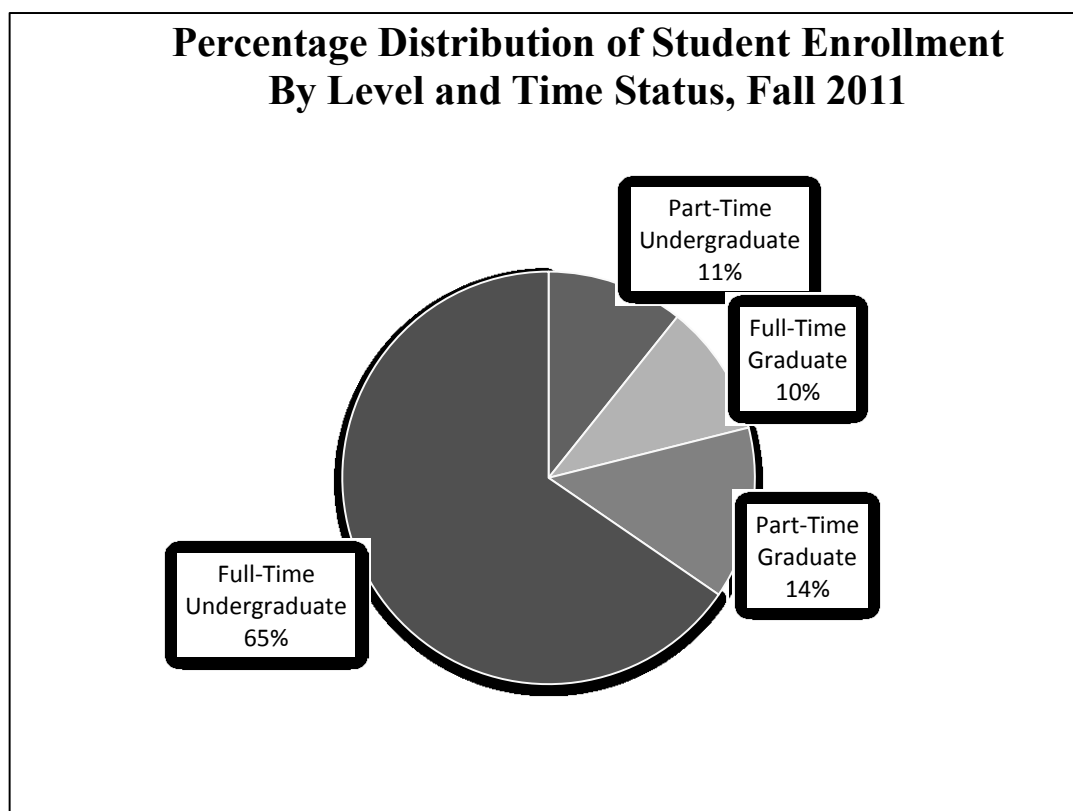


Figure IIB-C:

Credit Hour Consumption By Level and Time Status, 2007 to 2011					
	2007	2008	2009	2010	2011
Undergraduate					
Full-Time	73,785	74,469	72,293	72,045	70,575
Part-Time	4,480	4,431	4,383	4,222	4,139
Total Undergraduate	78,265	78,900	76,698	76,267	74,714
Graduate					
Full-Time	5,564	6,021	7,238	8,028	8,289
Part-Time	4,271	4,290	3,995	3,938	3,716
Total Graduate	9,835	10,311	11,233	11,965	12,005
All Students					
Full-Time	79,349	80,490	79,531	80,073	78,872
Part-Time	8,751	8,705	8,379	8,160	7,846
Total All Students	88,100	89,211	87,910	88,232	86,718

Figure IIB-D:

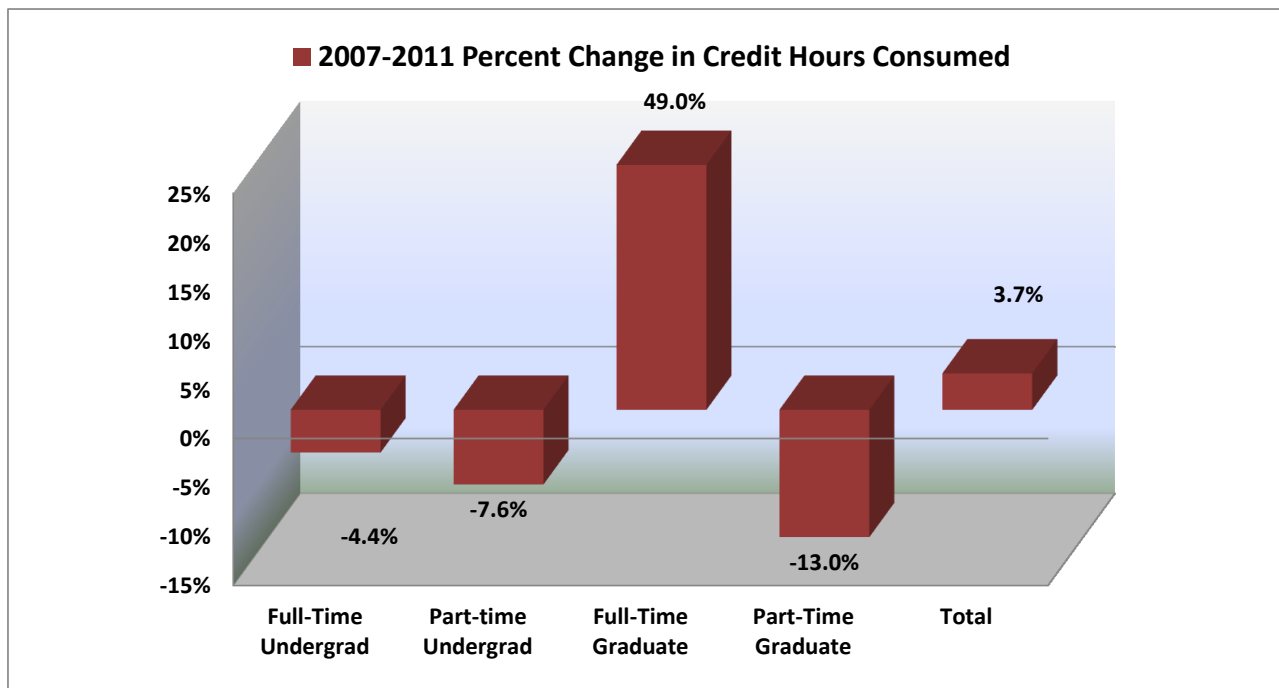


Figure IIB-E:

CENSUS DATE ENROLLMENT COMPARISON								
By College, Level and Time-Status								
Fall 2008 to Fall 2011								
	Fall 2008	Fall 2009	Fall 2010	Fall 2011	Fall 2008	Fall 2009	Fall 2010	Fall 2011
	Hartford Art School				College of Arts & Sciences			
Full-Time								
Undergraduate	358	346	332	279	1293	1263	1246	1205
Graduate	2	36	48	60	158	169	171	169
Total Full-Time	360	382	380	339	1,451	1,432	1,417	1,374
Part-Time								
Undergraduate	31	35	24	33	78	94	88	87
Graduate	34	3	0	0	142	133	158	137
Total Part-Time	65	38	24	33	220	227	246	224
TOTAL for School	425	420	404	372	1,671	1,659	1,663	1,598
	Barney School				Hillyer College			
Full-Time								
Undergraduate	646	611	586	561	582	551	469	470
Graduate	130	133	113	91	0	0	0	0
Total Full-Time	776	744	699	652	582	551	469	470
Part-Time								
Undergraduate	76	82	70	64	13	6	8	4
Graduate	416	390	369	341	0	0	0	0
Total Part-Time	492	472	439	405	13	6	8	4
TOTAL for School	1,268	1,216	1,138	1,057	595	557	477	474
	ENHP				CETA			
Full-Time								
Undergraduate	633	621	686	690	709	728	773	769
Graduate	146	160	181	194	47	63	56	60
Total Full-Time	779	781	867	884	756	791	829	829
Part-Time								
Undergraduate	131	89	111	122	86	80	71	78
Graduate	305	281	267	268	68	85	88	105
Total Part-Time	436	370	378	390	154	165	159	183
TOTAL for School	1,215	1,151	1,245	1,274	910	956	988	1012

Figure IIB-E:

CENSUS DATE ENROLLMENT COMPARISON								
By College, Level and Time-Status								
Fall 2008 to Fall 2011								
	Fall 2008	Fall 2009	Fall 2010	Fall 2011	Fall 2008	Fall 2009	Fall 2010	Fall 2011
	The Hartt School				Unassigned			
Full-Time								
Undergraduate	549	515	543	570	30	20	20	17
Graduate	95	111	126	147	3	5	5	6
Total Full-Time	644	626	669	717	33	25	25	23
Part-Time								
Undergraduate	28	18	25	21	226	218	200	192
Graduate	32	40	35	37	90	87	65	60
Total Part-Time	60	58	60	58	316	305	265	252
TOTAL for School	704	684	729	775	358	330	290	275
	University Studies				<i>All Colleges Combined</i>			
Full-Time								
Undergraduate	47	42	39	35	4,842	4,697	4,694	4,596
Graduate	0	0	0	0	579	677	700	727
Total Full-Time	47	42	39	35	5,421	5,374	5,394	5,323
Part-Time								
Undergraduate	135	148	145	153	853	819	804	754
Graduate	0	0	0	0	1,092	1,019	982	948
Total Part-Time	135	148	145	153	1,945	1,838	1,786	1,702
TOTAL for School	182	190	184	188				
	Total All Schools				7,366	7,212	7,180	7,025
	<i>Consortium:</i>				<i>46</i>	<i>34</i>	<i>62</i>	<i>30</i>
	<i>Total University:</i>				<i>7,412</i>	<i>7,246</i>	<i>7,242</i>	<i>7,055</i>

Figure IIB-F:

CENSUS DATE STUDENT CREDIT HOUR COMPARISON By College Credit Produced, Student Level and Time-Status Fall 2008 - Fall 2011								
	Fall 2008	Fall 2009	Fall 2010	Fall 2011	Fall 2008	Fall 2009	Fall 2010	Fall 2011
	Hartford Art School				College of Arts & Sciences			
Full-Time								
Undergraduate	3,485.5	3,516.5	3,025.0	2,990.5	31,792.0	30,337.0	31,047.0	29933.0
Graduate	24.0	151.0	225.0	285.0	1,911.0	2,037.0	2,002.0	1940.0
Total Full-Time	3,509.5	3,667.5	3,250.0	3,275.5	33,703.0	32,374.0	33,049.0	31873.0
Part-Time								
Undergraduate	239.0	229.0	245.5	200.5	1,898.0	1,938.0	1,905.0	1754.0
Graduate	140.0	25.0	2.0	6.0	525.0	479.0	506.0	421.0
Total Part-Time	379.0	254.0	247.5	206.5	2,423.0	2,417.0	2,411.0	2175.0
TOTAL for School	3,888.5	3,921.5	3,497.5	3,482.0	36,126.0	34,791.0	35,460.0	34,048.0
	Barney School				Hillyer College			
Full-Time								
Undergraduate	6,591.0	6,349.5	6,219.0	6350.0	8,647.0	8,166.0	7,045.0	7067.0
Graduate	1,260.0	1,332.0	1,092.0	942.0	0.0	0.0	0.0	0.0
Total Full-Time	7,851.0	7,681.5	7,311.0	7292.0	8,647.0	8,166.0	7,045.0	7067.0
Part-Time								
Undergraduate	411.0	451.5	419.0	434.0	88.0	50.0	69.0	34.0
Graduate	2,064.0	1,839.0	1,788.0	1662.0	0.0	0.0	0.0	0.0
Total Part-Time	2,475.0	2,290.5	2,207.0	2096.0	88.0	50.0	69.0	34.0
TOTAL for School	10,326.0	9,972.0	9,518.0	9,388.0	8,735.0	8,216.0	7,114.0	7,101.0
	ENHP				CETA			
Full-Time								
Undergraduate	3,453.5	3,472.0	3,292.5	3,437.0	7,306.0	7,741.0	8,131.0	7,567.0
Graduate	1,538.0	2,007.0	2,632.0	2,896.0	390.0	582.0	697.0	627.0
Total Full-Time	4,991.5	5,479.0	5,924.5	6,333.0	7,696.0	8,323.0	8,828.0	8,194.0
Part-Time								
Undergraduate	587.5	485.5	537.5	584.5	549.0	453.0	364.0	402.0
Graduate	1,228.0	1,276.0	1,325.0	1,248.0	219.0	248.0	201.0	281.0
Total Part-Time	1,815.5	1,761.5	1,862.5	1,832.5	768.0	701.0	565.0	683.0
TOTAL for School	6,807.0	7,240.5	7,787.0	8,165.5	8,464.0	9,024.0	9,393.0	8,877.0

Figure IIB-F:

CENSUS DATE STUDENT CREDIT HOUR COMPARISON By College Credit Produced, Student Level and Time-Status Fall 2008 to Fall 2011								
	Fall 2008	Fall 2009	Fall 2010	Fall 2011	Fall 2008	Fall 2009	Fall 2010	Fall 2011
	The Hartt School				All University Curriculum			
Full-Time								
Undergraduate	7,108.5	6,745.5	7,143.5	7,492.5	5,887.0	5,736.0	5,922.0	5,450.0
Graduate	898.0	1,129.0	1,379.5	1,598.5	0.0	0.0	0.0	0.0
Total Full-Time	8,006.5	7,874.5	8,523.0	9,091.0	5,887.0	5,736.0	5,922.0	5,450.0
Part-Time								
Undergraduate	152.5	111.5	156.0	134.0	280.0	265.0	207.0	237.0
Graduate	114.0	128.5	111.5	98.0	0.0	0.0	0.0	0.0
Total Part-Time	266.5	240.0	267.5	232.0	280.0	265.0	207.0	237.0
TOTAL for School	8,273.0	8,114.5	8,790.5	9,323.0	6,167.0	6,001.0	6,129.0	5,687.0
	University Studies				All Colleges Combined			
Full-Time								
Undergraduate	182.5	230.0	208.0	287.5	74,469.0	72,293.5	72,033.0	70,574.5
Graduate	0.0	0.0	0.0	0.0	6,021.0	7,238.0	8,027.5	8,288.5
Total Full-Time	182.5	230.0	208.0	287.5	80,490.0	79,531.5	80,060.5	78,863.0
Part-Time								
Undergraduate	*210	378.0	319.0	350.0	4,415.0	4,361.5	4,222.0	4,130.0
Graduate	0.0	0.0	0.0	0.0	4,290.0	3,995.5	3,937.5	3,716.0
Total Part-Time	210.0	378.0	319.0	350.0	8,705.0	8,357.0	8,159.5	7,846.0
TOTAL for School	392.5	608.0	527.0	637.5				
	*Paralegal Studies moved to University Studies				All Colleges Combined			
	Total All Schools				89,195.0	87,888.5	88,220.0	86,709.0
	Consortium:				16.0	22.0	12.0	9.0
	Total University				89,211.0	87,910.5	88,232.0	86,718.0

Figure IIB-G:

Fall 2011 Credit Hours Produced and Consumed by Level, Student College and Course College.

Students' College 201140	Course College										*Grand Total
	HAS	A&S	Barney	Hillyer	ENHP	CETA	Hartt	Univ Studies	AUC	CONS	
Undergraduate Totals	3224	31618	6743.5	7101	4428.5	7969	7720.5	629.5	5684	9	75127
Non-Matriculated	105	394	39	24	9	35	15	42	7	0	670
Hartford Art	2990	991	12	0	13	0	1	19	334	0	4359.5
Arts & Sciences	63.5	16096	491.5	3	190	54	91.5	101.5	1665	3	18759
Barney	12	2047	5631	0	62	10	11	10.5	904	0	8687.5
Hillyer	0	163	21	7071	70	3	2	0	19	0	7349
ENHP	6	6312	102	0	3876.5	7	14	34.5	970	0	11322
CETA	21	3437	126	0	44	7695	252.5	19	1030	3	12627.5
Hartt	0	1431	183	0	101	72	7333.5	3	631	3	9757.5
University Studies Consortium	24	540	117	0	48	80	0	400	124	0	1333
	3	207	21	3	15	13	0	0	0	0	262
Graduate Totals	258	2430	2644.5	0	3737	908	1602.5	8	3	0	11591
Non-Matriculated	3	57	55.5	0	78	22	3	4	0	0	222.5
Hartford Art	255	3	0	0	0	0	0	0	0	0	258
Arts & Sciences	0	2194	39	0	57	0	0	4	0	0	2294
Barney	0	6	2499	0	0	30	0	0	0	0	2535
ENHP	0	19	3	0	3598	0	7	0	3	0	3630
CETA	0	131	48	0	0	856	0	0	0	0	1035
Hartt	0	20	0	0	1	0	1592.5	0	0	0	1613.5
Consortium	0	0	0	0	3	0	0	0	0	0	3
Grand Total	3482	34048	9388	7101	8165.5	8877	9323	637.5	5687	9	86718

*Includes all Fall Saturdayterm Credits.

Figure IIB-H:

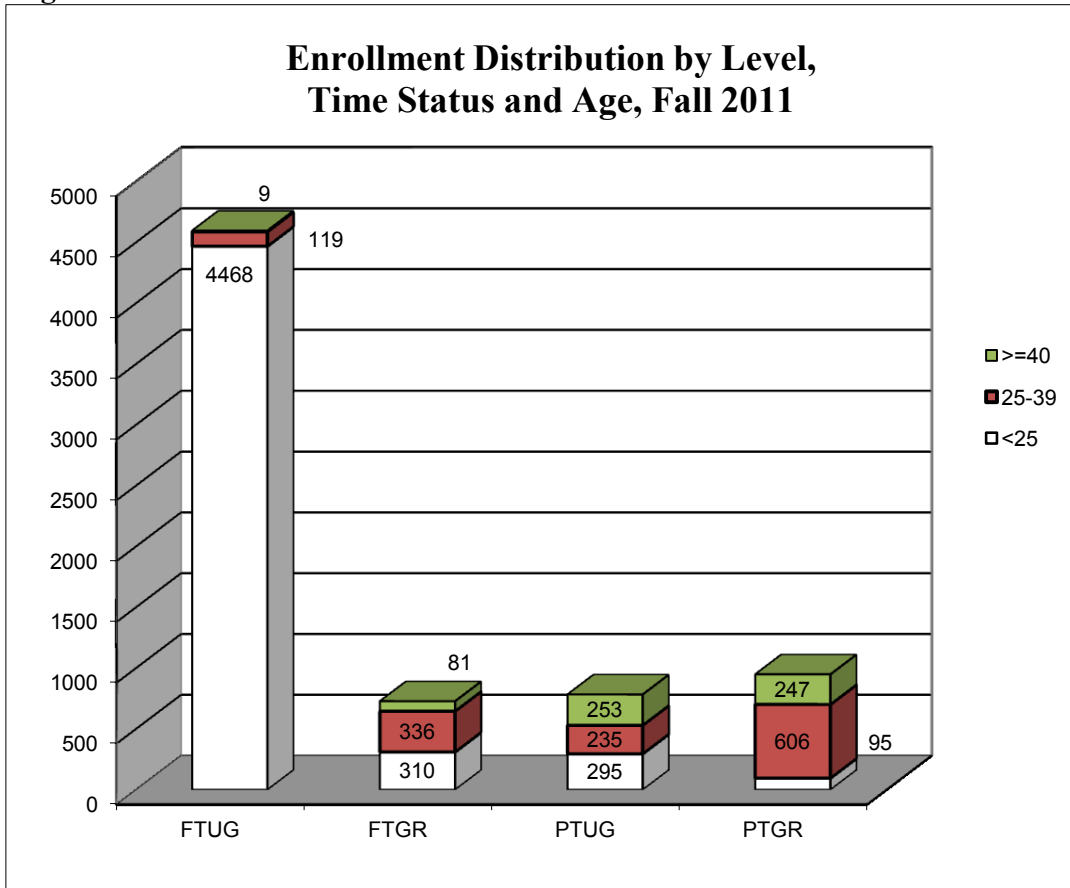


Figure IIB-I:

Headcount Enrollment by Age, Time Status, and Level Fall 2011					
Age	Full-Time		Part-Time		Total
	Undergrad	Graduate	Undergrad	Graduate	
Under 18	11		46		57
18-19	2124		46		2170
20-21	1852	6	69		1927
22-24	481	304	134	95	1014
25-29	82	238	105	325	750
30-34	27	65	60	172	324
35-39	10	33	70	109	222
40-49	7	57	134	162	360
50-64	2	23	95	83	203
65 and over		1	24	2	27
Total	4596	727	783	948	7054

Figure IIB-G:

Enrollment by Race and Ethnicity, Student Level, and Time Status, Fall 2011										
	Non-Resident Alien	Asian, one race	Black, one race	Hispanic, one or many races	American Indian or Native Alaskan, one race	Non-Hispanic, more than one race	Native Hawaiian or Pacific Islander, one race	White, one race	Unknown	Total
Undergraduate										
Full-Time	195	126	643	341	18	52	6	2,901	314	4,596
Part-Time	11	18	107	48	1	7	0	363	199	754
Total Undergrad	206	144	750	389	19	59	6	3,264	513	5,350
Graduate										
Full-Time	106	23	28	21	0	1	0	446	102	727
Part-Time	35	34	75	38	0	1	0	563	202	948
Total Graduate	141	57	103	59	0	2	0	1,009	304	1,675
All Students										
Full-Time	301	149	671	362	18	53	6	3,347	416	5,323
Part-Time	46	52	182	86	1	8	0	926	401	1,702
Total All	347	201	853	448	19	61	6	4,273	817	7,025

*Race and Ehtnicity statistics are collected and reported as required to the National Center for Educational Statics through the IPEDS interface, Fall 2011.

Figure IIB-H:

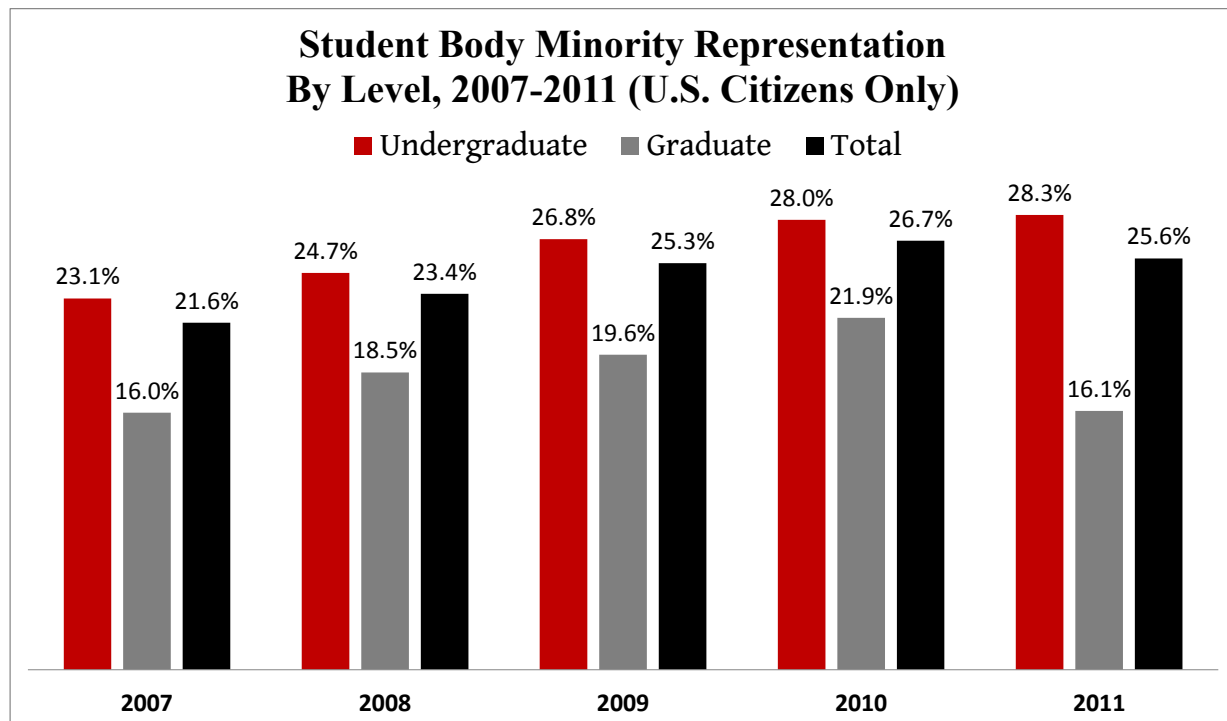


Figure IIB-L:

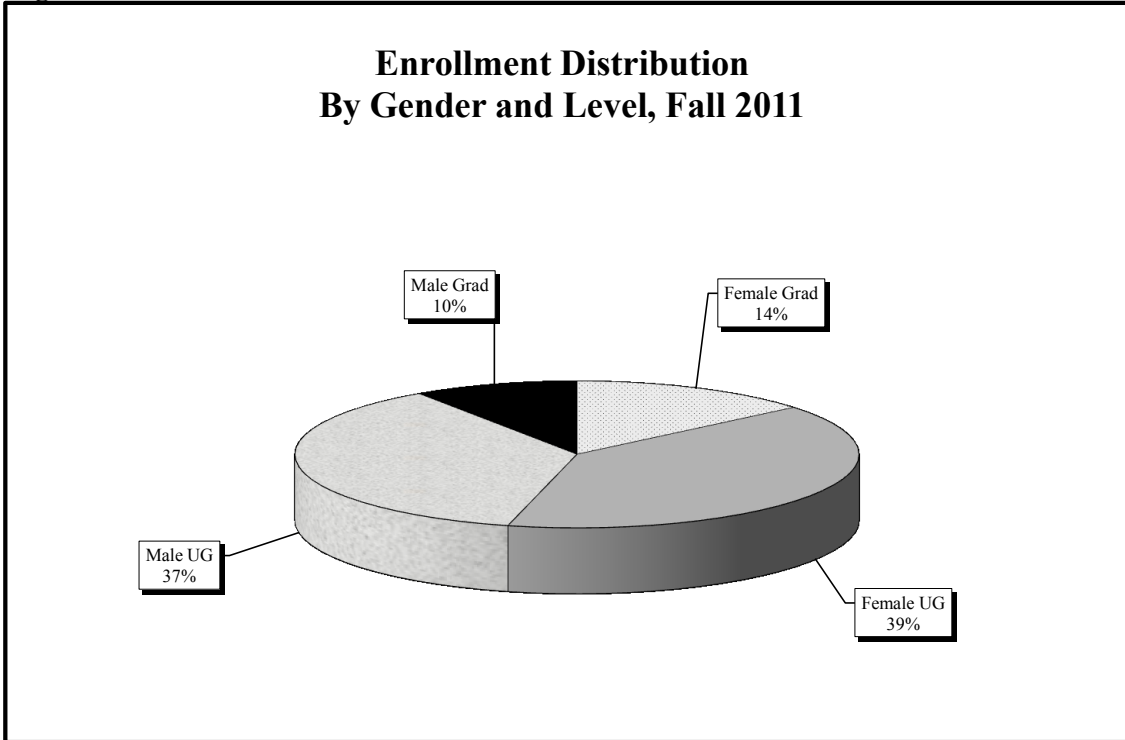


Figure IIB-M:

Degrees Awarded by Level, 1995-96 to 2011-12

Academic Year	Certificate	Associate's	Bachelor's	Master's*	Doctoral	Total Degrees
1995-96	12	87	735	567	15	1,416
1996-97	24	80	746	461	17	1,328
1997-98	24	65	778	403	21	1,291
1998-99	6	130	807	474	15	1,432
1999-00	7	120	928	416	28	1,499
2000-01	5	148	806	457	34	1,450
2001-02	5	194	894	455	29	1,577
2002-03	8	174	948	443	50	1,623
2003-04	24	178	911	410	49	1,572
2004-05	32	172	951	465	44	1,664
2005-06	38	151	992	502	53	1,736
2006-07	37	165	1025	501	35	1,763
2007-08	31	148	952	510	55	1,696
2008-09	26	150	1034	495	37	1,742
2009-10	29	175	998	470	69	1,741
2010-11	19	160	1058	476	71	1,784
2011-12	21	116	955	480	82	1,654

*Master's Includes MA/MS, CAGS, Art DP, Specialist Diploma, and 6th Year Certificates.

Source: Banner Archive as of date of publication. Exception: 1995-2003 Certificates were hand counted and reported by the issuing College.

Figure IIB-N:

Full-Time Undergraduate Enrollment By College, Fall 2006 to Fall 2011					
College	2007	2008	2009	2010	2011
Hartford Art School	325	358	346	332	279
College of Arts & Sciences	1286	1293	1263	1246	1205
Barney School of Business	597	646	611	586	561
Hillyer College	554	582	551	469	470
College of Educ., Nursing & HP	669	633	621	686	690
College of Engineering, Tech. & Archit.	709	704	728	773	769
The Hartt School	574	549	515	543	570
University Studies	52	47	42	39	35
Undecided	30	30	20	20	17
Total	4,796	4,842	4,697	4,694	4,596

Figure IIB-O:

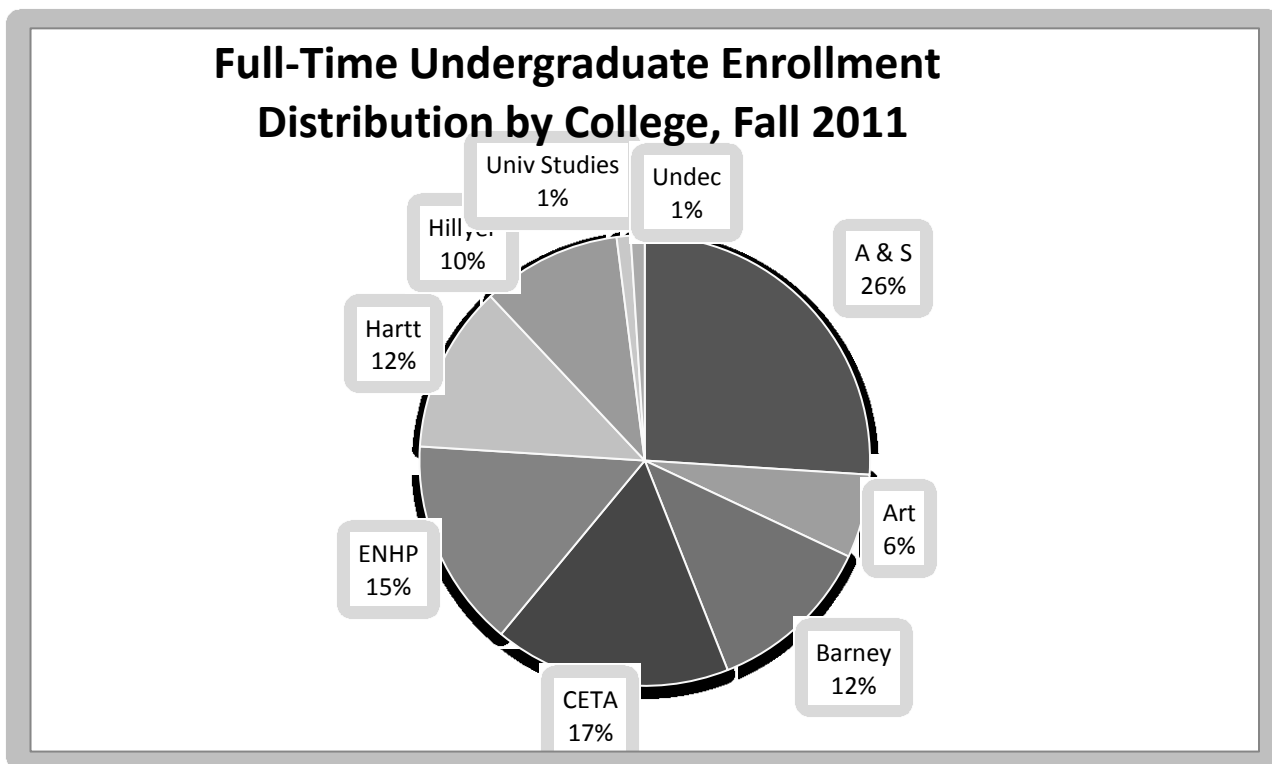


Figure IIB-P:

Geographic Distribution of Full-Time Undergraduates Fall 2007 to Fall 2011					
Origin of U.S. Citizens	2007	2008	2009	2010	2011
Connecticut	1530	1581	1648	1681	1692
New York	1037	1018	1017	996	947
Massachusetts	695	686	654	681	641
New Jersey	596	587	527	489	485
Pennsylvania	137	137	110	108	100
New Hampshire	138	133	112	107	96
Rhode Island	73	87	98	91	71
Maryland	61	63	57	51	52
Vermont	34	37	33	39	37
Florida	47	47	39	40	36
California	17	27	24	23	32
Maine	35	40	26	33	30
Virginia	22	26	23	17	21
Illinois	25	20	16	18	18
Texas	20	18	13	10	11
Ohio	18	17	9	9	7
Other States	148	127	116	104	121
<i>States Represented</i>	<i>48</i>	<i>50</i>	<i>43</i>	<i>43</i>	<i>43</i>

Figure IIB-Q:

Geographic Distribution of International Full-Time Undergraduates Fall 2007 to Fall 2011					
Origin	2007	2008	2009	2010	2011
Saudi Arabia	53	49	50	62	58
China, People's Republic	2	5	14	27	22
Korea - ROK	20	17	19	27	14
Kuwait	2	0	1	5	14
Canada	11	13	14	13	13
India	7	6	7	5	7
Japan	7	3	1	6	6
Brazil	4	4	4	4	5
Jordan	4	5	4	5	5
Turkey	16	16	10	7	4
Other Countries	65	74	55	42	44
Grand Total	191	192	179	203	195
<i>Countries Represented</i>	<i>40</i>	<i>47</i>	<i>39</i>	<i>39</i>	<i>35</i>

Figure II-I:

Percent Retention First to Second Year By College and Fall of Enrollment, 2006-2010						
Program/College	2006	2007	2008	2009	2010	5-Year Average
All Programs	68.3	71.1	67.8	73.3	71.7	70.4
All Four-Year	69.0	74.3	70.6	75.6	72.8	72.5
Hartford Art School	75.6	88.0	76.1	77.0	82.6	79.9
Arts & Sciences	65.6	66.5	61.7	70.6	65.0	65.9
Barney School	62.5	71.5	71.8	69.4	77.2	70.5
ENHP	71.7	73.9	72.7	82.0	72.3	74.5
CETA	68.2	76.4	75.0	78.0	74.8	74.5
The Hartt School	78.5	85.2	80.9	85.0	82.5	82.4
University Studies	77.8	60.0	55.6	50.0	83.3	65.3
All Two-Year	65.6	59.9	59.3	65.7	65.8	63.3
Hillyer	65.6	59.9	59.3	65.7	65.8	63.3

Compares IPEDS First-time Full-time Cohort Members to Subsequent Fall Full-time Active Status at Census.

Figure II J:

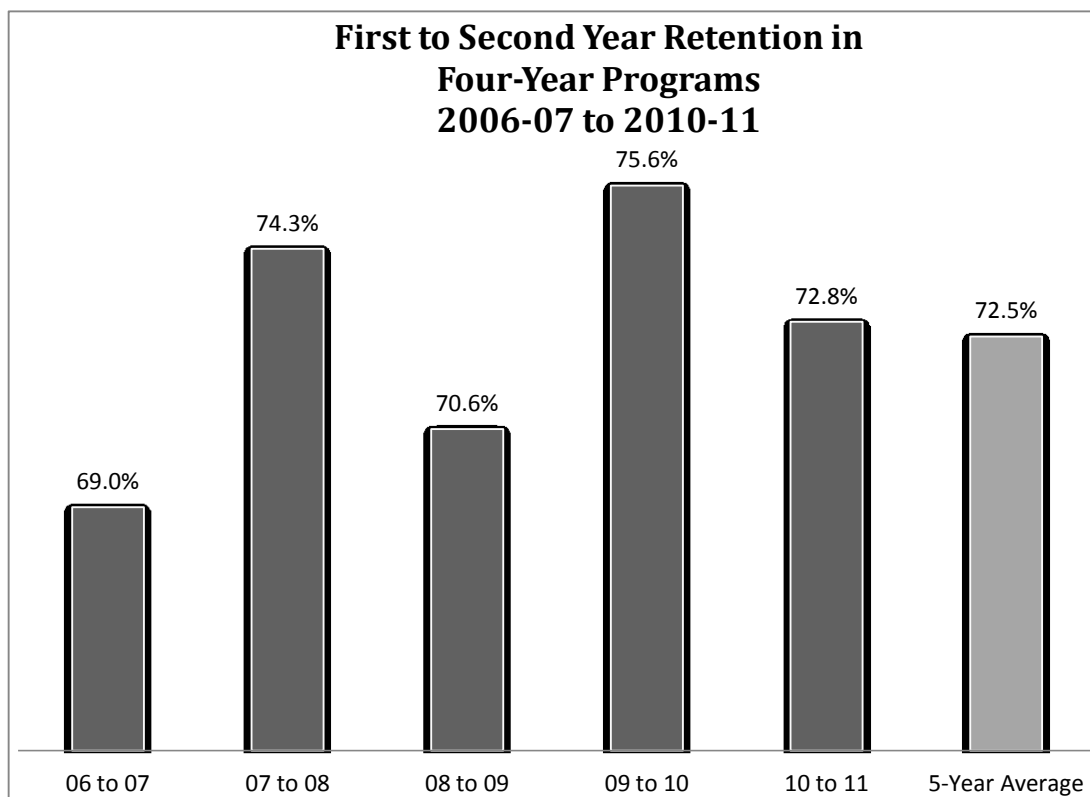
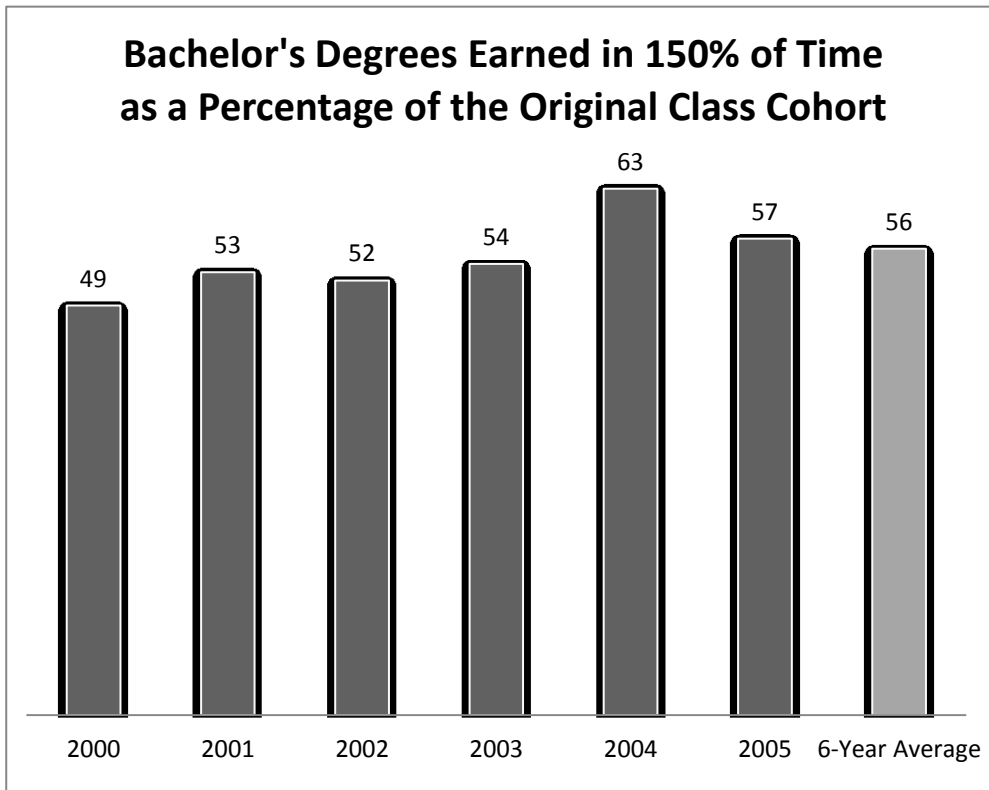


Figure II K:

150% Graduation Rate By College and Degree Group Fall 2000 to Fall 2005 Cohorts							
Program/College	2000	2001	2002	2003	2004	2005	6-Year Average
Total University	50	52	53	53	58	55	54
All Four Year	49	53	52	54	63	57	56
Hartford Art School	61	66	68	69	67	67	66
Arts & Sciences	40	43	44	45	56	48	46
Barney School	53	53	57	53	65	60	57
ENHP	62	63	51	62	70	69	63
CETA	42	52	45	49	67	50	51
The Hartt School	53	59	61	64	61	63	60
University Studies	61	68	77	64	82	73	71
All Two-Year	52	51	55	53	47	47	51
Hillyer	52	51	55	53	47	47	51

Figure II L:



University of Hartford
Figure IIB-V:

Trends in Undergraduate Majors by College, Fall 2006 - Fall 2011																								
College/School	<i>FTE Undergraduate Majors</i>							5 Yr Mean	<i>Full-Time Undergraduate Enrollment</i>							5 Yr Mean	<i>Part-Time Undergraduate Enrollment</i>							5 Yr Mean
	2006	2007	2008	2009	2010	2011	2006		2007	2008	2009	2010	2011	2006	2007		2008	2009	2010	2011				
	HARTFORD ART SCHOOL	358	342	391	363	344	293		350	346	325	360	348	335	278		27	33	36	35	21	33	37	
Ceramics	15	8	11	12	13	9	12	14	7	10	11	12	7	11	3	1	2	2	2	4	3			
Drawing	3	1	0	2	2	0	1	3	1	0	2	2	0	1	0	0	0	0	0	0	0			
Illustration	44	28	42	37	38	25	37	43	26	28	36	36	25	34	2	2	2	3	4	1	3			
Media Arts	7	5	6	3	1	1	4	7	4	5	3	1	1	3	1	1	1	0	0	0	1			
Painting/	18	16	27	16	12	16	18	16	14	24	16	12	15	17	4	4	6	0	0	3	3			
Photography	18	13	19	22	22	18	20	17	11	17	22	22	17	19	3	5	4	0	0	3	3			
Printmaking	13	10	7	12	10	9	10	12	10	6	11	10	8	9	2	1	4	5	0	4	3			
Sculpture	7	8	6	3	5	9	6	7	8	5	3	5	8	6	0	1	1	1	0	2	1			
Visual Communication Design	36	14	19	20	25	19	24	35	14	19	18	24	18	23	2	0	1	5	1	1	2			
Undecided	197	239	254	236	216	187	218	192	230	246	226	211	180	211	10	18	15	19	14	15	18			
ARTS & SCIENCES	1350	1320	1331	1314	1294	1251	1308	1309	1282	1293	1263	1271	1205	1268	81	68	77	94	59	87	93			
Art History	19	17	17	15	10	9	14	17	15	16	14	10	8	13	4	4	2	2	0	2	3			
Biology	65	80	88	117	135	140	109	64	78	86	113	131	135	106	1	5	3	6	8	8	6			
Chemistry	19	18	22	21	20	17	20	19	16	21	19	20	16	19	0	3	2	3	1	2	2			
Chemistry/Biology	34	42	44	44	35	27	37	33	40	43	43	34	26	36	3	2	3	2	2	2	3			
Cinema	77	73	61	61	51	52	60	75	72	59	60	52	48	59	3	1	3	2	0	7	3			
Communication	253	277	276	268	249	231	255	249	272	270	260	246	224	250	9	9	12	16	10	15	14			
Computer Science	46	40	48	37	39	39	42	43	37	45	34	37	37	39	7	5	7	5	5	4	7			
Criminal Justice	98	83	75	78	76	108	87	95	81	72	75	73	103	84	7	4	6	6	7	11	8			
Drama	2	0	0	0	0	0	0	1	0	0	0	0	0	0	1	0	0	0	0	0	0			
Economics	1	2	3	3	6	10	5	1	2	3	3	5	9	4	0	1	0	0	2	1	1			
English, English Literature	73	66	68	65	69	57	66	70	61	67	62	68	55	64	5	8	3	5	3	5	6			
History	33	45	53	52	50	51	48	31	42	51	48	49	50	46	4	6	4	7	3	2	5			
International Studies	19	16	27	25	23	14	22	18	15	26	24	23	13	21	1	1	1	1	1	1	1			
Judaic Studies	6	9	11	8	8	7	8	6	9	11	8	8	7	8	0	0	0	0	0	0	0			
Mathematics, Secondary Ed. Math	2	4	6	9	17	12	9	2	4	6	9	17	12	9	0	0	0	0	0	0	0			
Mathematics	18	11	15	12	18	18	16	16	10	14	11	17	17	15	5	3	3	2	1	3	3			
Modern Languages and Cultures	11	5	11	11	7	9	10	11	4	11	10	7	8	9	0	2	0	2	1	2	1			
Philosophy	9	4	5	6	4	4	6	9	4	4	6	4	4	5	0	0	1	0	0	0	0			
Physics	8	8	6	7	7	12	8	8	8	6	6	7	11	8	0	1	1	2	0	1	1			
Political Economy	5	3	6	3	3	1	4	4	3	6	3	3	1	3	2	0	0	0	0	0	0			
Politics and Government	65	61	60	60	72	64	64	64	59	59	58	71	64	63	3	2	2	4	1	0	2			
Psychology	198	199	210	199	203	192	200	193	195	204	192	199	185	195	9	7	12	16	10	11	13			
Rhetoric & Professional Writing	10	7	6	10	12	9	9	9	7	5	8	12	9	9	2	0	3	3	1	0	2			
Sociology	35	36	33	25	21	28	28	33	35	31	22	19	27	26	4	2	4	5	3	3	4			
Undecided	244	214	180	178	159	140	180	238	213	177	175	159	136	177	11	2	5	5	0	7	6			

12

10

Figure IIB-V:

University of Hartford

Page

Page

Trends in Undergraduate Majors by College, Fall 2006 - Fall 2011																								
College/School	FTE Undergraduate Majors							5 Yr Mean	Full-Time Undergraduate Enrollment							5 Yr Mean	Part-Time Undergraduate Enrollment							5 Yr Mean
	2006	2007	2008	2009	2010	2011	2006		2007	2008	2009	2010	2011	2006	2007		2008	2009	2010	2011				
	BARNEY SCHOOL	609	641	682	652	620	589		630	563	597	646	611	594	561		595	103	95	76	82	62	64	
Accounting	89	102	116	129	131	118	117	79	89	106	118	121	106	106	23	30	22	25	26	26	30			
Economics and Finance	67	90	111	104	86	78	89	60	85	108	97	82	76	85	16	9	6	14	8	5	12			
Entrepreneurial Studies	33	39	39	39	35	28	35	31	37	39	37	34	27	34	4	3	0	3	2	3	3			
Insurance and Finance	43	50	56	46	39	40	45	38	44	50	42	35	37	40	11	12	13	8	11	7	12			
Management	131	110	115	118	104	104	114	115	100	105	111	99	97	105	34	22	22	15	11	16	24			
Management Info Systems	13	10	4	1	0	0	4	11	9	3	0	0	0	3	5	2	1	1	0	0	2			
Marketing	102	86	98	97	104	100	100	100	82	93	92	103	99	97	5	10	10	8	2	2	7			
Undecided	131	154	143	118	121	121	127	129	151	142	114	120	119	125	5	7	2	8	2	5	6			
HILLYER COLLEGE	570	560	588	555	475	471	532	559	554	582	551	525	470	537	18	13	13	6	6	4	12			
E.N.H.P.	656	730	697	665	735	736	698	599	669	634	621	688	688	646	117	130	131	89	102	122	138			
Clinical Lab Science/Med Tech	10	16	16	16	16	12	14	9	14	15	15	15	10	13	1	4	4	1	1	3	3			
Early Childhood Education	61	55	55	53	57	43	54	56	51	48	48	54	41	49	9	9	13	11	7	4	11			
Elementary Education	68	55	48	45	40	30	46	67	54	47	44	40	30	46	3	1	1	1	1	1	2			
Health Science	72	106	102	119	128	132	111	65	102	95	114	127	126	105	15	8	12	8	3	12	12			
Health Science/Physical Therapy	128	146	143	134	161	166	146	128	145	141	134	161	165	146	0	1	4	1	1	3	2			
Human Services	31	34	30	30	29	22	28	29	31	27	29	28	21	27	4	7	6	2	3	2	5			
Nursing	31	37	30	22	32	38	31	0	1	0	0	0	0	0	66	80	68	48	69	79	82			
Magnetic Resonance Image	1	3	0	1	0	5	1	0	0	0	0	0	4	1	1	5	1	2	1	2	2			
Prothetics and Orthotics	0	0	0	0	0	18	4	0	0	0	0	0	18	4	0	0	0	0	0	0	0			
Radiologic Technology	72	94	83	69	78	79	76	70	93	81	68	78	78	75	5	2	4	2	0	1	3			
Respiratory Therapy	20	32	39	39	38	42	36	18	29	34	36	33	37	32	5	8	12	6	11	12	11			
Secondary Education	25	22	16	13	13	5	14	25	22	15	12	13	16	16	0	0	1	2	0	0	1			
Special Education/Elementary	104	89	87	81	94	97	93	102	87	85	80	93	95	91	3	3	3	2	2	3	3			
Undecided Education	4	10	13	20	23	17	15	4	10	13	20	22	17	15	0	0	0	0	1	0	0			
Undecided Health Prof.	29	31	35	23	26	30	29	26	30	33	21	24	30	27	5	2	2	3	2	0	3			
CETA	716	752	750	746	807	809	766	669	709	687	724	758	769	721	96	86	90	146	60	78	111			
Acoustical Engineering & Music	29	33	38	35	35	35	34	29	33	38	34	35	34	34	0	0	0	0	0	2	0			
Architectural Engineering Technology	183	193	192	191	204	196	193	178	187	184	182	198	185	185	9	11	14	12	11	18	15			
Audio Engineering Technology	106	89	79	83	81	80	86	103	85	77	78	79	78	83	4	4	3	6	4	4	5			
Biomedical Engineering	24	31	37	36	44	50	38	23	30	36	34	43	50	37	2	1	2	2	2	1	2			
Chemical Engineering Technology	3	2	0	0	0	0	1	2	1	0	0	0	0	0	1	1	1	1	1	0	1			
Civil Engineering	47	57	61	66	75	75	65	45	54	58	75	72	73	65	3	4	8	13	8	5	8			
Computer Engineering	32	34	34	28	27	27	30	31	34	33	27	27	25	29	2	1	1	1	1	3	2			
Computer Engineering Tech	22	22	24	21	27	25	24	21	22	24	19	26	24	23	2	0	0	3	1	1	1			
Electrical Engineering	50	55	48	44	49	45	47	43	51	45	52	46	44	46	17	13	8	32	8	4	16			
Electronic Engineering Tech	27	24	26	29	31	29	28	20	21	23	26	29	25	25	17	8	7	6	6	8	10			
Environmental Engineering	1	1	0	4	2	3	2	1	1	0	2	2	3	2	1	0	0	8	0	0	2			
Interdisc. Contract Major	2	4	4	5	2	2	3	2	3	4	8	3	1	4	1	2	1	3	1	3	2			
Mechanical Engineering	104	115	125	124	136	143	126	91	101	109	132	134	135	120	27	29	31	52	7	16	32			
Mechanical Engineering Technology	54	60	47	36	46	40	45	49	56	40	32	43	36	40	8	9	12	6	9	8	10			
Undecided	32	32	35	44	48	59	44	31	30	16	23	21	56	29	2	3	2	1	1	5	3			
HARTT SCHOOL	603	583	564	527	562	582	568	585	574	542	514	548	570	552	20	17	28	18	19	21	25			

Figure IIB-V:

Trends in Undergraduate Majors by College, Fall 2006 - Fall 2011																								
College/School	FTE Undergraduate Majors							5 Yr Mean	Full-Time Undergraduate Enrollment							5 Yr Mean	Part-Time Undergraduate Enrollment							5 Yr Mean
	2006	2007	2008	2009	2010	2011	2006		2007	2008	2009	2010	2011	2006	2007		2008	2009	2010	2011				
	Actor Training	42	48	46	38	42	46		43	42	48	46	38	42	46		43	0	0	0	0	0	0	
Children's Dance Emphasis	2	0	0	0	0	0	0	2	0	0	0	0	0	0	0	0	1	0	0	0	0	0		
Composition	16	17	17	17	17	16	17	15	17	16	17	17	16	16	1	0	2	0	0	0	0	1		
Dance Pedagogy Emphasis	14	12	15	18	19	11	15	14	12	15	18	19	11	15	0	0	0	0	0	0	0	0		
Dance Performance Emphasis	24	29	29	31	39	35	32	24	29	29	31	38	35	31	0	0	1	0	1	0	0	0		
Jazz Studies	42	39	34	32	42	35	37	40	38	33	32	41	34	36	3	2	1	1	2	2	2	2		
Music Ed/ Instrumental Emph.	42	36	37	32	27	26	33	40	36	35	32	26	26	32	2	0	3	1	1	0	1	1		
Music Ed/Vocal Emph.	35	42	35	36	33	32	34	33	41	33	35	31	31	33	2	1	4	1	5	2	3	3		
Music History	3	6	6	6	4	1	4	3	5	5	5	3	0	3	0	2	1	1	1	2	1	1		
Music Major	10	6	9	8	7	3	7	9	6	8	7	7	3	7	1	0	1	1	0	0	1	1		
Music Management	22	25	26	27	27	23	25	22	24	26	26	26	21	24	0	2	1	1	1	2	1	1		
Music Production and Technology	39	39	33	25	35	34	33	37	38	33	25	35	33	33	3	2	0	0	0	1	1	1		
Music Theatre	104	93	92	88	78	98	92	100	93	90	87	75	96	90	4	0	4	1	1	2	2	2		
Music Theory	3	5	6	3	2	2	3	2	4	6	3	2	2	3	1	1	0	0	0	1	1	1		
Performance - Instrument	113	105	100	97	102	114	105	112	103	89	95	100	111	101	3	5	7	4	3	6	6	6		
Performance - Voice	57	50	46	43	55	69	54	52	49	45	40	54	69	52	0	2	2	3	2	1	2	2		
Performing Arts Management	35	31	33	26	33	37	33	38	31	33	23	32	36	32	0	0	0	4	2	2	2	2		
UNIVERSITY STUDIES	115	121	106	100	103	101	105	53	54	47	42	60	35	47	147	151	136	147	124	153	172	172		
Certificate Pre-Med	4	4	3	6	7	7	5	2	1	0	1	1	1	1	5	4	6	9	13	10	9	9		
Legal Studies	19	20	22	27	34	32	27	2	2	2	1	14	3	4	44	45	47	59	52	72	64	64		
Liberal Studies	4	2	2	7	5	4	4	0	0	0	1	0	1	0	8	5	4	13	11	6	9	9		
Multimedia Web Design and Development	50	51	46	29	31	31	37	48	51	45	37	34	30	39	4	0	2	2	0	1	2	2		
University Studies	38	44	33	31	26	27	31	1	0	0	2	11	0	3	86	97	77	64	48	64	87	87		
COLLEGE/SCHOOL TOTALS	4977	5049	5109	4922	4940	4832	4956	4683	4764	4791	4674	4779	4298	4645	609	593	587	617	453	562	684	684		
NON-MATRICULANT	107	99	113	93	88	84	97	27	31	30	20	27	17	24	247	198	244	218	210	192	262	262		
CONSORTIUM	8	9	8	16	20	10	12	1	0	0	0	0	0	0	22	32	27	49	45	29	41	41		
TOTAL	5092	5157	5230	5031	5048	4926	5065	4711	4795	4821	4694	4806	4315	4669	878	823	858	884	708	783	987	987		

Figure IIB-W:		Trends in Graduate Majors by College, Fall 2006 - Fall 2011																				
College/School	Degree	FTE Graduate Majors							Full-Time Graduate Enrollment							Part-Time Graduate Enrollment						
		2006	2007	2008	2009	2010	2011	5 Yr Mean	2006	2007	2008	2009	2010	2011	5 Yr Mean	2006	2007	2008	2009	2010	2011	5 Yr Mean
		HARTFORD ART SCHOOL		15	16	17	18	21	29	23	9	9	2	36	48	60	33	19	18	34	3	0
Illustration (LR)	MFA	0	0	0	16	13	14	9	0	0	0	36	30	28	19	0	0	0	0	0	0	0
Painting	MFA	6	7	3	1	0	0	3	5	7	2	0	0	0	3	2	0	3	2	0	0	1
Photography	MFA	5	2	1	1	8	15	6	4	2	0	0	18	32	11	2	1	2	1	0	0	1
Printmaking	MFA	0	7	13	0	0	0	4	0	0	0	0	0	0	0	0	17	29	0	0	0	9
Sculpture	MFA	4	0	0	0	0	0	1	0	0	0	0	0	0	0	15	0	0	0	0	0	3
COLLEGE OF ARTS & SCIENCES		207	192	198	205	209	208	244	155	151	158	168	171	169	194	144	140	142	132	157	137	170
Biology/Neuroscience	MS	13	22	25	27	31	28	29	10	17	18	22	24	23	23	8	11	13	12	15	15	15
Communication	MA	38	23	25	35	29	30	36	16	8	12	22	18	18	19	28	30	29	30	32	24	35
General Psychology/ Experimental	MA	7	6	6	10	10	10	10	8	4	6	9	8	9	9	3	4	3	1	6	3	4
Organizational Psychology/Behavioral	MS/MSOB	24	18	21	13	15	19	22	2	5	8	5	5	7	6	19	25	28	17	19	23	26
Psychology MA-Clinical	MA	23	23	22	22	24	25	28	22	23	22	22	24	25	28	1	0	0	0	1	0	0
Psychology PSYD-Clinical	PsyD	73	71	68	68	69	66	83	73	71	68	66	69	65	82	77	60	60	61	72	60	78
School Psychology	6TH YR	0	0	0	0	0	0	0	0	0	0	0	0	0	0	0	0	0	0	0	0	0
School Psychology	MS	29	29	31	29	31	30	36	24	23	24	22	23	22	28	8	10	9	11	12	12	12
BARNEY SCHOOL		327	337	348	331	309	273	385	114	113	130	130	113	91	138	424	426	416	390	369	341	473
Accelerated MBA	AMBA	0	0	0	41	32	18	18	0	0	0	41	32	17	18	0	0	0	0	0	1	0
Certificate of Prof. Acc. Acctg.	CERT	1	1	2	1	1	0	1	0	0	0	0	0	0	0	1	3	4	3	1	0	2
Certificate of Prof. Acc. Bus.Admin.	CERT	1	1	0	1	0	1	1	0	0	0	0	0	0	0	1	1	0	2	0	1	1
Cert Prof Accomplish/Taxation	CERT	0	0	0	2	0	1	1	0	0	0	2	0	0	0	0	0	0	1	0	2	1
Executive MBA	EMBA	22	28	12	0	0	0	12	22	28	12	0	0	0	12	1	0	0	0	0	0	0
Masters Business Administration	MBA	234	235	261	219	219	187	271	67	63	91	59	54	41	75	330	328	325	313	310	277	377
MBA Health Care Professionals	MBA	1	0	0	0	0	0	0	1	0	0	0	0	0	0	2	1	0	0	0	0	1
MS Taxation	MS	0	1	0	0	0	0	0	0	0	0	0	0	0	0	0	0	0	0	0	0	0
MSAT Accel. Taxation	MSAT	1	2	5	3	5	1	3	1	1	3	0	4	1	2	1	2	3	0	1	2	2
MSAT Accel.Fin.-Assurance Serv.	MSAT	11	7	6	13	1	2	8	7	3	3	9	0	1	5	9	8	5	8	1	0	6
MSAT Financial-Assurance Serv.	MSAT	34	35	39	33	34	38	43	11	14	18	14	17	18	18	45	39	40	37	32	35	46
MSAT/Taxation	MSAT	22	27	23	18	17	25	26	5	4	3	5	6	13	7	34	44	39	26	24	23	38
E.N.H.P.		282	272	282	305	319	326	357	124	126	146	159	181	194	186	335	322	305	265	266	268	352
Counseling	6TH YR	6	4	3	0	0	0	3	0	1	1	0	0	0	0	7	7	5	0	0	0	4
Counseling	MS	13	11	8	0	1	0	7	1	4	3	0	0	0	2	17	13	9	0	1	0	8
Counseling	MED	2	3	2	1	0	0	2	0	1	1	0	0	0	0	2	4	3	2	0	0	2
Deaf Education	MED	0	6	6	8	10	0	6	0	6	6	8	10	0	6	0	0	0	0	0	0	0
Early Childhood Education	MED	20	20	15	17	16	22	22	5	7	4	8	3	6	7	29	26	23	18	23	27	29
Educational Leadership	EdD	68	68	68	60	59	55	76	51	48	49	40	37	39	53	36	43	41	50	45	34	50
Educational Leadership	6TH YR	0	0	0	0	0	0	0	0	0	0	0	0	0	0	0	0	1	0	0	0	0
Educational Technology	MED	11	9	7	10	11	12	12	1	0	1	1	2	1	1	22	21	14	25	17	24	25
Elementary Education	MED	46	34	33	34	38	31	43	32	20	22	14	25	19	26	27	34	19	21	21	18	28
Guidance & Counseling	6TH YR	0	0	0	2	1	0	1	0	0	0	0	0	0	0	0	0	0	5	2	0	1
Guidance & Counseling	MS	0	0	0	0	0	0	0	0	0	0	0	0	0	0	0	0	0	0	1	0	0
Non-Matric Prosth/Ortho	TBD	0	0	18	18	20	23	16	0	0	0	0	0	10	2	0	0	21	0	23	16	12
Nursing	MSN	79	69	64	68	58	65	81	1	0	1	0	0	2	1	164	152	144	140	131	147	176
Nursing/Education	CERT	2	1	0	2	0	0	1	0	0	0	0	0	0	0	6	2	0	3	0	1	2
Physical Therapy	MSPT/DPT	34	40	58	85	105	118	88	33	39	58	88	104	117	88	23	19	25	1	2	1	14
Secondary Education	MED	0	1	0	0	0	0	0	0	0	0	0	0	0	0	0	1	0	0	0	0	0
Special Education	MED	1	6	0	0	0	0	1	0	0	0	0	0	0	0	2	0	0	0	0	0	0
CETA		77	73	74	93	85	95	99	53	77	45	63	56	60	71	68	68	72	85	88	105	97
Architecture	M ARCH	20	10	10	19	25	23	21	20	10	7	19	24	21	20	7	0	5	3	4	10	6
Civil Engineering	ME	6	5	12	14	10	25	14	4	3	9	11	6	16	10	6	5	6	10	13	21	12
Electrical Engineering	ME	21	22	17	20	15	13	22	17	46	11	13	10	7	21	12	18	17	22	24	26	24
Environmental Engineering	ME	5	5	4	4	3	7	6	2	2	0	1	1	3	2	9	8	10	8	5	7	9
Master of Engineering	ME	4	5	6	6	5	5	6	2	2	2	0	2	3	2	4	7	7	11	6	6	8
Mechanical Engineering	ME	21	26	25	30	27	22	30	8	14	16	19	13	10	16	30	30	27	31	36	35	38

Figure IIB-W:

Trends in Graduate Majors by College, Fall 2006 - Fall 2011

College/School		FTE Graduate Majors							Full-Time Graduate Enrollment							Part-Time Graduate Enrollment						
								5 Yr							5 Yr							5 Yr
		2006	2007	2008	2009	2010	2011	Mean	2006	2007	2008	2009	2010	2011	Mean	2006	2007	2008	2009	2010	2011	Mean
THE HARTT SCHOOL		116	125	103	140	124	157	153	109	95	95	133	126	148	141	31	39	32	59	34	36	46
Academic																						
Composition	MMUS	6	4	3	6	1	10	6	5	4	3	5	11	10	8	0	0	0	1	0	0	0
Composition	DMA	4	8	5	6	1	6	6	5	5	5	2	5	6	6	1	3	2	8	2	1	3
Composition	GPD	2	2	0	1	0	1	1	3	2	0	1	1	1	2	0	0	0	0	0	0	0
Composition	AD	2	3	2	4	0	4	3	5	3	2	4	3	4	4	0	0	0	0	0	0	0
Music History/Performance Practices	MMUS	1	2	1	0	0	0	1	0	1	1	0	0	0	0	0	1	0	1	0	0	0
Music History/Scholarship & Research	MMUS	1	1	0	0	1	2	1	0	0	0	0	1	2	1	1	1	0	0	0	0	0
Music Theory	MMUS	1	2	0	0	1	1	1	3	1	0	0	1	1	1	1	1	0	0	0	0	0
Instrumental																						
Conducting, Orchestral	MMUS	2	2	2	2	1	1	2	2	2	2	2	0	1	2	0	0	0	1	0	0	0
Conducting, Orchestral	DMA	0	0	0	0	0	0	0	0	0	0	0	0	0	0	0	0	0	0	0	0	0
Conducting, Orchestral	GPD	1	0	0	0	0	1	0	0	0	0	0	0	1	0	1	0	0	0	0	0	0
Conducting, Orchestral	AD	0	0	0	0	0	0	0	0	0	0	0	0	0	0	0	0	0	0	0	0	0
Performance - Instrument	MMUS	28	28	25	42	42	48	43	28	20	24	42	46	47	41	3	7	2	3	3	3	4
Performance - Instrument	DMA	12	9	9	8	9	13	12	9	6	8	14	7	11	11	6	6	10	22	4	8	11
Performance - Instrument	GPD	8	16	23	17	18	15	19	8	15	23	16	20	18	20	1	1	0	2	3	2	2
Performance - Instrument	AD	1	2	3	14	11	14	9	1	2	3	14	9	13	8	1	0	0	0	2	1	1
Piano Accompanying	MMUS	0	1	0	0	1	1	1	0	1	0	0	1	1	1	0	0	0	0	0	0	0
Piano Pedagogy Emphasis	MMUS	6	4	3	4	5	3	5	5	3	1	4	5	2	4	1	3	4	0	0	2	2
Suzuki Pedagogy Emphasis	MMUS	10	3	2	8	9	12	9	8	3	2	7	2	11	7	2	0	0	1	1	2	1
Vocal																						
Conducting, Choral	MMUS	0	1	1	1	1	1	1	0	0	1	1	0	0	0	1	1	0	0	1	1	1
Conducting, Choral	DMA	2	1	1	0	1	1	1	1	0	1	0	1	1	1	1	1	0	0	0	0	0
Conducting, Choral	AD	0	0	0	0	0	0	0	0	0	0	0	0	0	0	0	0	0	0	0	0	0
Performance - Voice	MMUS	6	7	6	2	1	0	4	6	7	5	2	0	0	4	0	0	1	0	1	0	0
Performance - Voice	DMA	1	1	1	2	2	1	2	1	1	1	2	2	0	1	0	0	0	0	0	2	0
Performance - Voice	GPD	5	3	3	1	0	2	3	5	3	3	1	0	2	3	0	0	0	0	0	0	0
Performance - Voice	AD	1	1	1	4	2	2	2	1	1	1	4	2	2	2	0	0	0	0	0	0	0
Music Education																						
Music Ed/Choral Conducting	MMUSED	0	0	0	0	0	0	0	0	0	0	0	0	0	0	0	0	0	0	0	0	0
Music Ed/Choral Conducting	DMA	0	1	0	2	1	1	1	0	0	0	2	1	1	1	0	1	1	2	0	0	1
Music Ed/Early Childhood	MMUSED	0	0	0	0	0	0	0	0	0	0	0	0	0	0	1	0	0	0	0	0	0
Music Ed/Early Childhood	PHD	0	0	0	0	0	0	0	0	0	0	0	0	0	0	0	0	0	0	0	0	0
Music Ed/Instrumental Conducting	MMUSED	3	4	3	2	1	2	3	2	2	3	2	0	1	2	1	2	1	0	1	2	1
Music Ed/Instrumental Conducting	DMA	1	2	0	1	1	1	1	1	2	0	0	0	0	1	1	0	2	4	1	1	2
Music Ed/Kodaly	MMUSED	4	3	1	3	2	2	3	3	2	0	1	1	1	2	1	1	3	4	2	3	3
Music Ed/Pedagogy	MMUSED	5	7	4	6	9	10	8	3	3	3	4	5	7	5	3	7	4	7	11	7	8
Music Ed/Pedagogy	PHD	0	0	0	0	0	1	0	0	0	0	0	0	1	0	0	0	0	1	0	1	0
Music Ed/Pedagogy	DMA	0	0	1	1	1	0	1	1	0	0	0	0	0	0	0	0	2	2	1	0	1
Music Ed/Performance	MMUSED	2	6	3	3	1	0	3	1	5	3	3	1	0	3	2	2	0	0	1	0	1
Music Ed/Performance	DMA	0	0	0	0	0	0	0	0	0	0	0	0	0	0	0	0	0	0	0	0	0
Music Ed/Research	MMUSED	0	0	0	0	1	1	0	1	0	0	0	1	3	1	1	0	0	0	0	0	0
Music Ed/Technology	MMUSED	1	1	0	0	0	0	0	1	1	0	0	0	0	0	1	0	0	0	0	0	0
Music Education	MMUSED	0	0	0	0	0	0	0	0	0	0	0	0	0	0	0	1	0	0	0	0	0
COLLEGE/SCHOOL TOTALS		1024	1015	1022	1092	1067	1088	1262	564	307	557	679	695	722	705	1021	1013	1001	934	914	887	1154
NONMATRICULANT		49	41	36	38	31	28	45	3	6	1	3	5	6	5	122	114	99	90	87	60	114
CONSORTIUM		0	0	0	0	0	0	0	0	0	0	0	0	0	0	1	0	0	1	0	1	1
UNIVERSITY TOTAL		1073	1056	1058	1130	1098	1116	1306	567	313	558	682	700	728	710	1144	1127	1100	1025	1001	948	1269

Section III - Finance

Figure III-A:

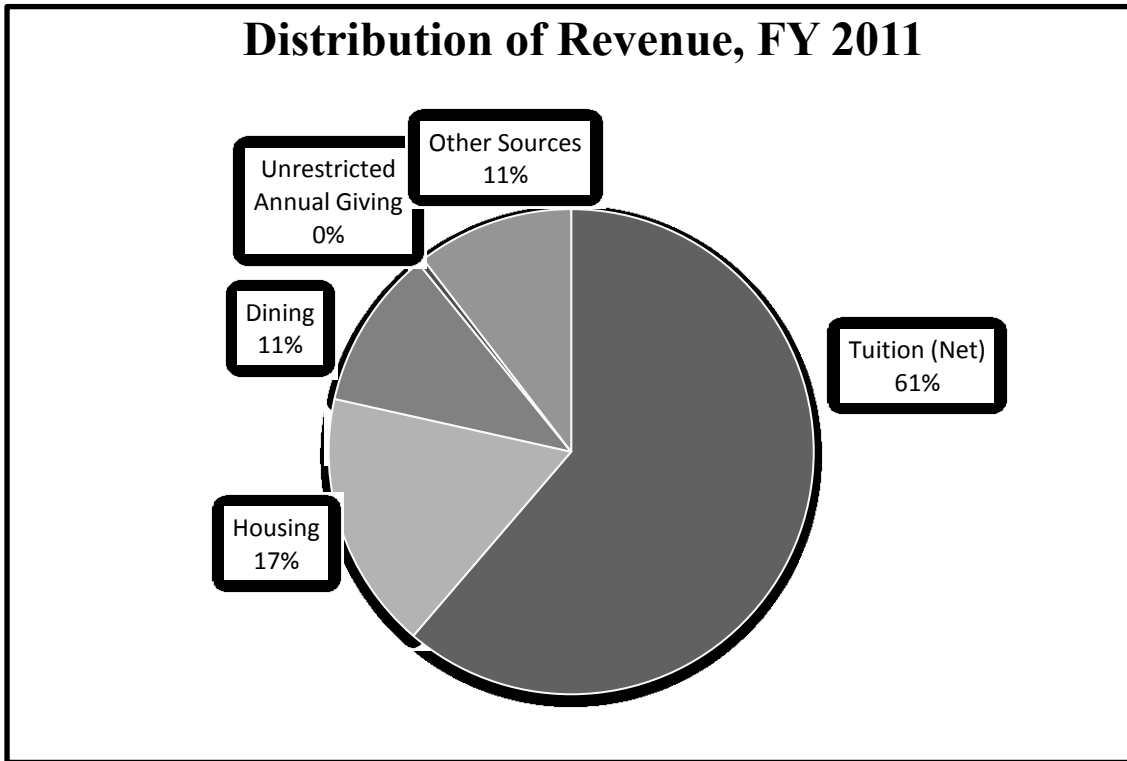
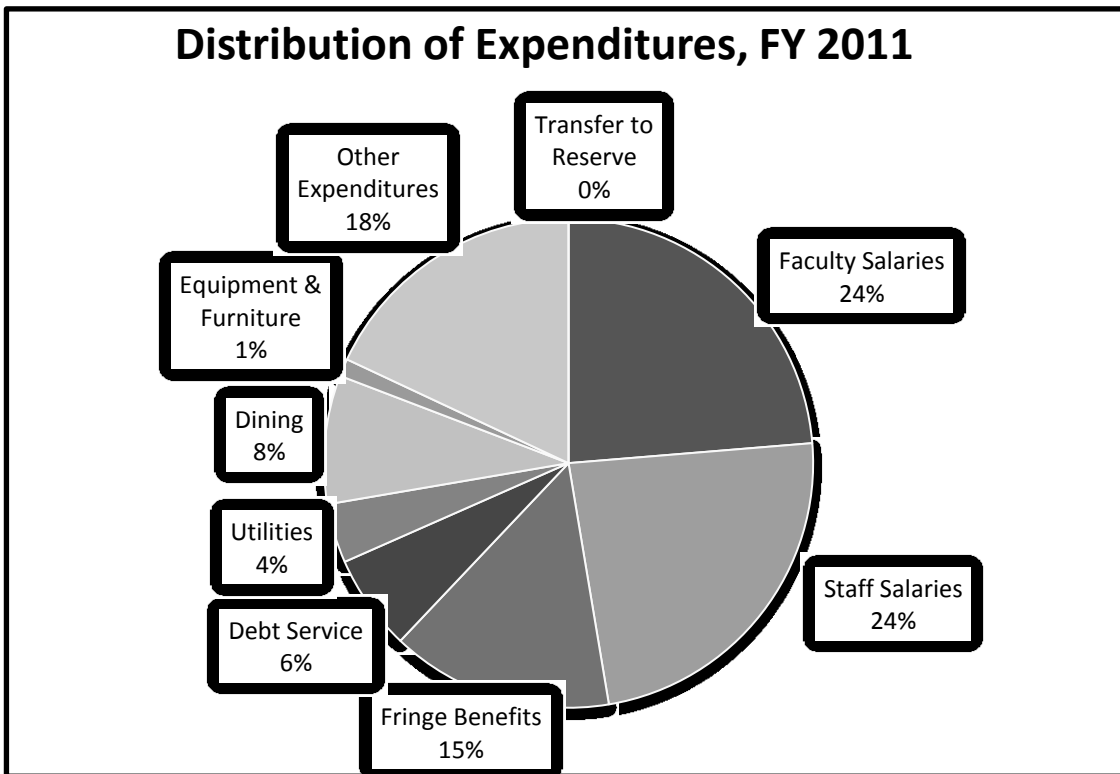


Figure III-B:



Section III - Full-Time Faculty

Figure III-A:

Full-Time Faculty by Tenure, Rank, Gender, College and Average Salary 2007 to 2011					
	2007	2008	2009	2010	2011
Total Full-Time Faculty*	334.5	337	349	347	347
Tenured	201	203	209	205	212
Untenured	133.5	134	140	142	135
Professor	81	83	84	78	83.5
Associate	140	138	146	138	137
Assistant	100	103	106	107	101.5
Other	13.5	13	13	24	25
Female	120.5	117	130	135	134
Male	214	220	219	212	213
Hartford Art School	21.0	22.0	24.0	25.0	22.0
Arts & Sciences	113.0	115.5	116.0	116.8	117.0
Barney Sch. of Bus.	39.0	39.0	41.0	37.5	39.0
Hillyer	33.5	35.0	36.0	36.2	38.0
E.N.H.P.	37.0	37.5	35.0	37.5	35.0
CETA	34.5	32.0	37.0	37.0	37.0
The Hartt School	54.0	54.0	56.0	54.0	55.0
Office of the Provost	1.0	1.0	1.0	1.0	1.0
University Studies	1.0	0.5	2.0	1.5	2.0

*All ranks including Instructor and Lecturer.

Figure III-B:

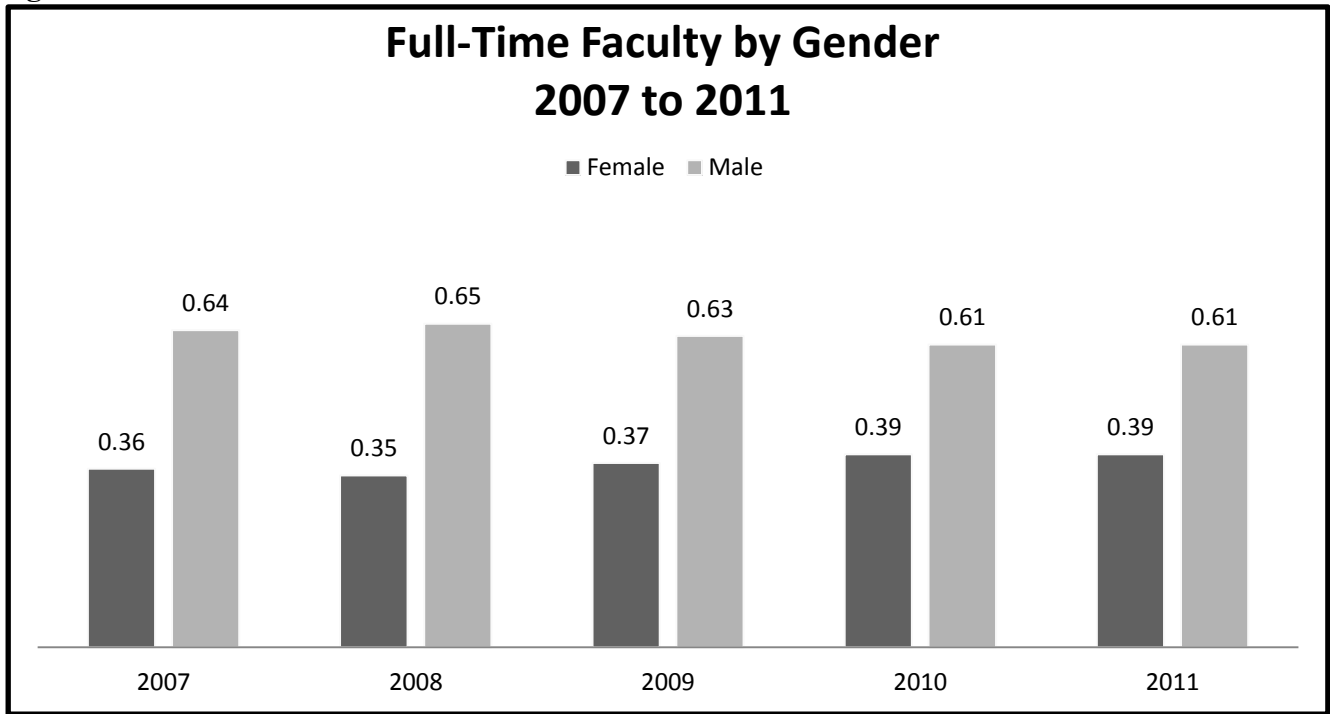
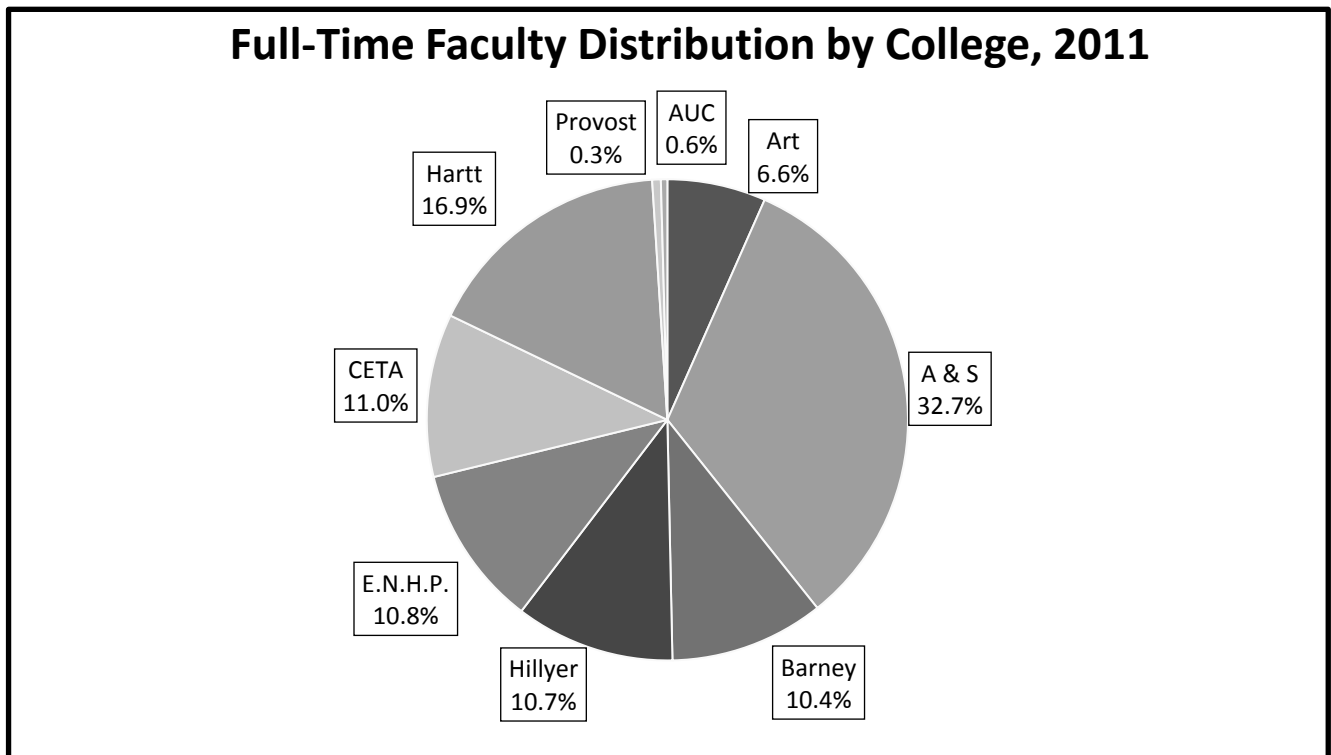


Figure III-C:



Section V - Libraries and Learning Resources

Figure V-A:

Libraries Circulation					
	2006/07	2007/08	2009/10	2010/11	2011/12
External					
W. H. MORTENSEN Library	31,293	35,976	36,779	68,654	72,889
ALLEN Library	25,602	24,876	24,993	41,586	56,384
<i>Subtotal</i>	56,895	60,852	61,772	110,240	129,273
Internal					
MORTENSEN Reserves	*2,231	*1,259	*709	14,596	*6,897
ALLEN Reserves	3,690	3,599	3,601	1,360	2,397
<i>Subtotal</i>	5,921	4,858	4,310	15,956	9,294
TOTAL	62,816	65,710	66,082	**126,196	138,567

* reserves are now through Blackboard

Figure V-B:

Interlibrary Loans					
	2006/07	2007/08	2009/10	2010/11	2011/12
Loaned To Other Libraries					
Books and Photocopies	7,054	3,441	3,737	3,144	2,800
Unfilled Requests	2,507	1,274	1,526	2,362	2,055
<i>Subtotal: Transactions</i>	9,561	4,715	5,263	5,506	4,855
Borrowed From Other Libraries					
<i>Subtotal: Transactions</i>	3,833	3,893	4,828	4,590	4,167
TOTAL TRANSACTIONS	13,394	8,613	10,091	10,096	9,022

Figure V-C:

Reference Services, Hours and Patronage					
	2006/07	2007/08	2009/10	2010/11	2011/12
Reference Classes					
Number of Reference Classes	213	249	229	325	350
Total Students in Classes			4,359	5,008	6,353
Hours of Operation /per week					
W. H. MORTENSEN Library			101.5	101.5	101.5
ALLEN Library			84.5	84.5	84.5
Patronage					
MORTENSEN Library Gate Count	293,766	300,776	329,801	229,739	340,000
ALLEN Library Gate Count	58,690	58,599	58,601	51,272	54,684
TOTAL	352,456	359,375	388,402	281,011	394,684

Totals are as of this publication date.

Figure V-D:

Collections					
	2006/07	2007/08	2009/10	2010/11	2011/12
Volumes					
Volumes Added	5,858	6,414	6,691	8,403	7,156
Volumes Withdrawn	1,297	1,716	4,995	1,430	2,582
<i>Subtotal: Collections</i>	481,685	486,383	579,177	586,150	590,724
Microforms					
Microfilms Held	383,385	383,386	383,386	383,386	383,386
Microform Vol Equivalent	49,278	49,278	49,278	49,278	49,278
Periodicals/Journals					
Current: Electronic & Paper			37,393	37,393	49,600
Non-Current Titles			1,479	1,479	1,479
<i>Total: Collections</i>	621,514	627,287	667,327	674,300	691,081
Databases					
Databases				150	150
Network Access to Database	1,565,542	2,687,532	1,022,609	1,022,609	1,549,332

Please note: This report has been revised. Some totals from previous years may be missing details because it did not use the current conventions.

Totals are as of this publication date.

Section VI - Accreditation and Degrees

University of Hartford

New England Association of Schools and Colleges (NEASC)
Licensed by State of Connecticut, Board of Higher Education

College of Arts and Sciences

Accreditation

Chemistry (Undergraduate) - American Chemical Society
Clinical Psychology (Psy.D.) - American Psychological Association (APA)
School Psychology (M.S.) - National Association of School Psychologists and
National Council of Accreditation of Teacher Education (NCATE)
Mathematics-Secondary Education - National Council of Accreditation of
Teacher Education (NCATE)

Degrees

Doctoral Degree

Clinical Psychology (Psy.D.)

Master of Arts

Communication

Psychology

Clinical Practices

General Psychology

Master of Science

Biology: Neuroscience

Organizational Psychology

School Psychology

Bachelor of Arts

Art History

Biology

Chemistry

Cinema

Communication

Computer Science

Contract Major

Criminal Justice

Economics

English

Gender Studies

History

International Studies

Judaic Studies

Bachelor of Arts (continued)

Mathematics

Mathematics -

Secondary Education

Modern Languages

Philosophy

Physics

Political Economy

Politics and Government

Psychology

Rhetoric and

Professional Writing

Sociology

Bachelor of Science

Biology

Chemistry

Chemistry/Biology

Computer Science

Mathematics

Physics

Associate of Arts

Communication

Humanities

Social Sciences

Associate of Science

Biological Sciences

Physical Sciences

Barney School of Business	
Accreditation	
AACSB International - The Association to Advance Collegiate Schools of Business	
Degrees	
<i>Master of Business Administration</i> <i>Accelerated MBA</i> <i>Master of Science</i> Accounting and Taxation	<i>Bachelor of Science in</i> <i>Business Administration</i> Accounting Economics/Finance Entrepreneurial Studies Insurance/Finance Management Marketing

Hartford Art School	
Accreditation	
Institutional Member of National Association of Schools of Art and Design (NASAD)	
Degrees	
<i>Master of Fine Arts in Illustration</i> <i>(low residency)</i> <i>Master of Fine Arts in Photography</i> <i>(low residency)</i> <i>Bachelor of Fine Arts</i> Ceramics Drawing Visual Communication Design	<i>Bachelor of Fine Arts (continued)</i> Illustration Media Arts Painting Photography Printmaking Sculpture

The Hartt School

Accreditation

National Association of Schools of Music (NASM)
 National Association of Schools of Dance (NASD)
 National Association of Schools of Theatre (NAST)
 Music Education (Undergraduate and Graduate) - State of Connecticut, Board of
 Education, and National Council for Accreditation of Teacher Education (NCATE)

Degrees

Doctor of Musical Arts

Composition
 Choral Conducting
 Instrumental Performance
 Music Education
 Voice Performance

Doctor of Philosophy

Music Education

Master of Music

Composition
 Conducting
 Instrumental Performance
 Organ and Liturgical Music
 Music History
 Music Theory
 Voice Performance

Master of Music Education

Artist Diploma and Graduate

Professional Diploma

with emphases in:
 Composition
 Orchestral Conducting
 (GPD only)
 Instrumental Performance
 Voice Performance

Bachelor of Music

Composition
 Guitar Performance
 Instrumental Performance
 Jazz Studies
 Music Education
 Music History
 Music Management
 Music Production &
 Technology
 Music Theory
 Organ Performance
 Piano Performance
 Pre-Cantorial Studies

Bachelor of Fine Arts

Dance Performance
 Music Theatre
 Actor Training

Bachelor of Arts

Music Major
 Performing Arts Management

Undergraduate Diploma

Composition
 Instrumental Performance
 Jazz Studies
 Voice Performance

Hillyer College

Degrees

Associate in Arts

Liberal Arts

Concentrations in:

American Studies	Environmental Studies
Business Studies	Global Studies
Education Studies	Health Science Studies

College of Education, Nursing and Health Professions

Accreditation

Department of Education & Human Services

State of Connecticut, Board of Education
National Council of Accreditation of Teacher Education (NCATE)

Department of Nursing

Commission on Collegiate Nursing Education (CCNE)

Department of Health Sciences

Radiologic Technology - Joint Review Committee on Education in
Radiological Technology (JRCERT)
Respiratory Care - Committee on Accreditation for Respiratory Care (CoARC)

Department of Physical Therapy

Physical Therapy - Commission on Physical Therapy Education (CAPTE)
Prosthetics and Orthotics - National Commission on Orthotics and Prosthetics
Education (NCOPE)

Degrees

Doctor of Education:

Educational Leadership

Doctor of Physical Therapy

Master of Education:

Early Childhood Education

Elementary Education

Master of Science in Nursing

Master of Science in Prosthetics and Orthotics

Bachelor of Arts:

Secondary Education - English

Bachelor of Science:

Early Childhood Education

Elementary Education

Health Science

Radiologic Technology

Respiratory Care

Elementary Special Education

Bachelor of Science in Nursing

Associate in Science:

Health Science

College of Engineering, Technology, and Architecture

Accreditation

Engineering Accreditation Commission of the Accreditation Board for Engineering and Technology (EAC/ABET): Undergraduate majors in Acoustical Engineering and Music, Biomedical Engineering, Civil Engineering, Computer Engineering, Electrical Engineering, and Mechanical Engineering.

Engineering Technology Accreditation Commission of the Accreditation Board for Engineering and Technology (TAC/ABET): Undergraduate majors in Architectural Engineering Technology, Electronic Engineering Technology, and Mechanical Engineering Technology

National Architecture Board (NAAB): Masters in Architecture.

Degrees

Master of Architecture (M.Arch.)

Master of Engineering (M.Eng.)

Civil Engineering

Electrical Engineering

Environmental Engineering

Mechanical Engineering

Bachelor of Science in

Civil Engineering (B.S.C.E.)

Environmental Concentration

Mechanical Engineering (B.S.M.E.)

Acoustics Concentration

Energy Concentration

Manufacturing Concentration

Engineering (B.S.E.)

Acoustics and Music

Biomedical Engineering

Interdisciplinary Major

Electrical Engineering (B.S.E.E.)

Computer Engineering (B.S.Cmp.E.)

Bachelor of Science (B.S.)

Architectural Engineering

Technology

Audio Engineering Technology

Electronic Engineering

Technology

Mechanical Engineering

Technology

Computer Engineering

Technology

Engineering Technology

(Contract Major)

Associate in Science (A.S.)

Computer Engineering

Technology

Electronic Engineering

Technology

Engineering Science

University Studies

Accreditation

Paralegal Studies - American Bar Association (ABA)

Degrees

Bachelor of Arts

Multimedia Web Design
& Development

University Studies

Bachelor of Science

Paralegal Studies

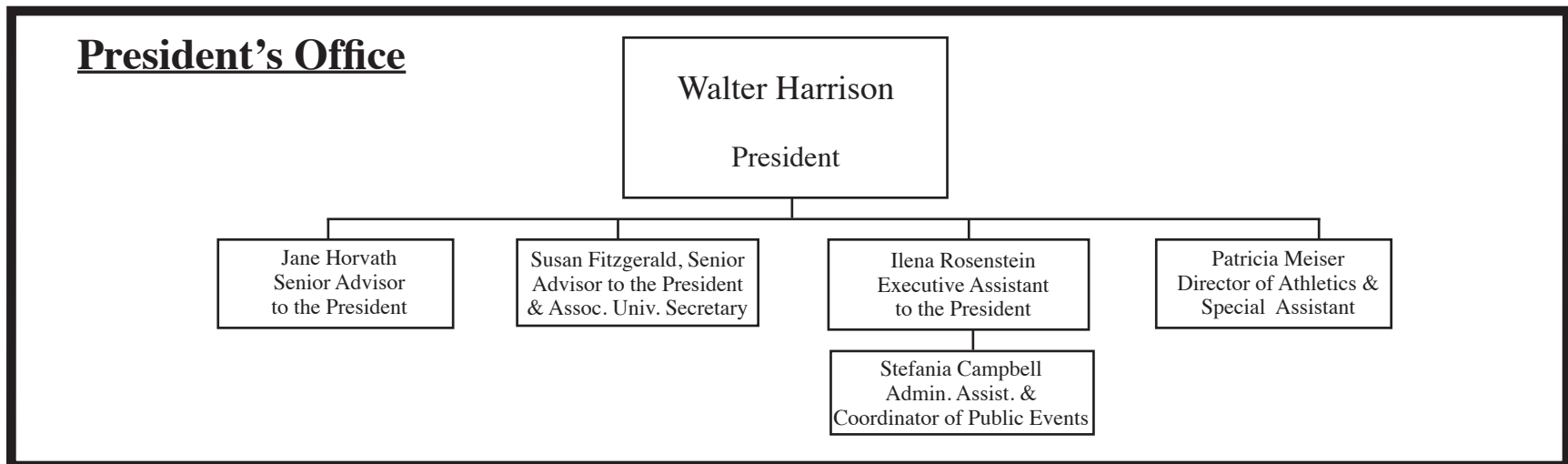
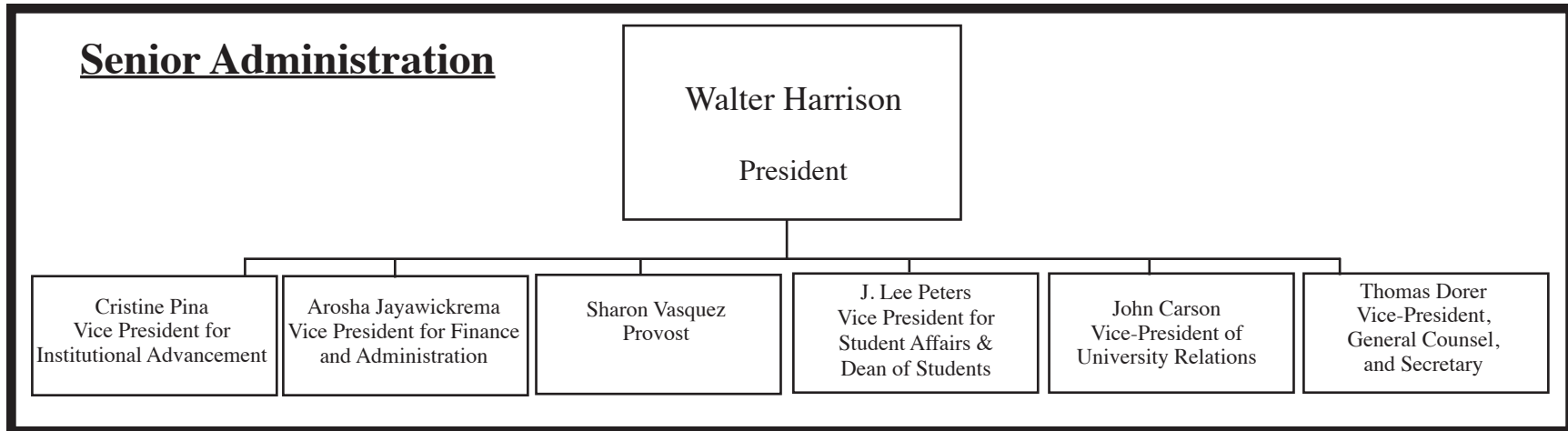
Associate of Arts

Liberal Arts

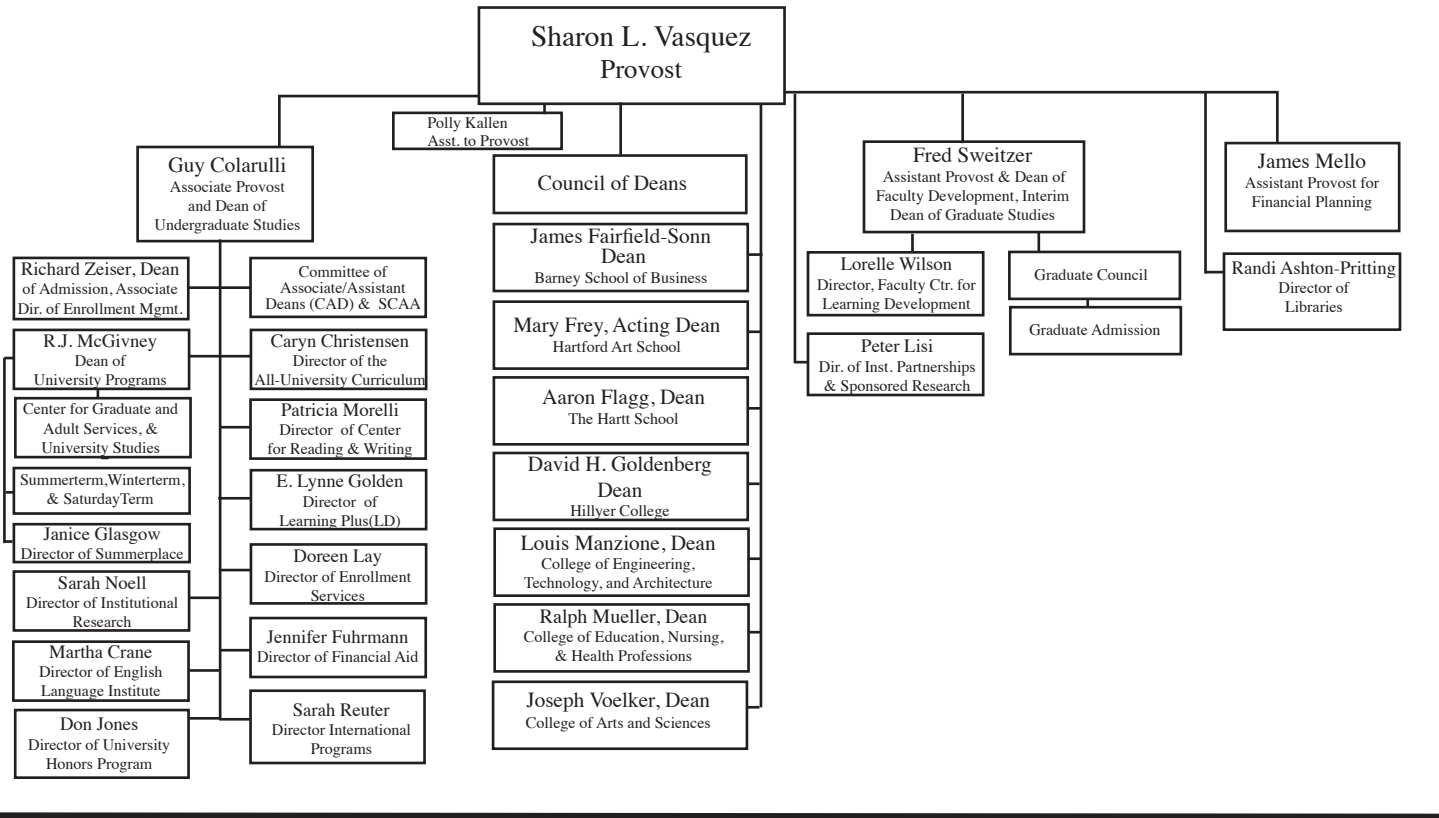
Associate of Science (A.S.)

Paralegal Studies

VII. Organizational Charts



Academic Affairs



Student Affairs

J. Lee Peters
Vice President
for Student Affairs and
Dean of Students

Marcia Sues
Admin. Assistant

Irwin Nussbaum
Associate Vice-President
for Student Life &
Director of the
Student Success Center

Andrea Miller
Associate Director of the
Student Success Center

John Kniering
Director of
Career Services

Linda Schultz
Associate Director of
Career Services

Suzanne Anderson McNeil
Assistant Vice-President
for Student
Health & Wellness

Patricia McKenna-Grant
Director of Connections,
Wellness & Women's
Centers

Felecia Bumpus
Director of Student
Activities & Greek Life

Kristy Severino
Director of
Student Centers

Dave Albert
Director of Counseling
& Psych. Services

Mary Norris
Admin. Director of
Health Services

Disabilities

Admin. Interns

Lois Traynum-Lindsey
Assistant Vice-President
for
Student Development

Multicultural Programs

Halena Sajko
Director for Community
Svcs. & Student Conduct

Matt Blocker
Director for
Community Service

Campus Ministry
Catholic
Fr. Mike Dolan
Sandi Smith
*Director of Jewish
Student Life*
Tanya Tsikanovsky
Protestant
Open

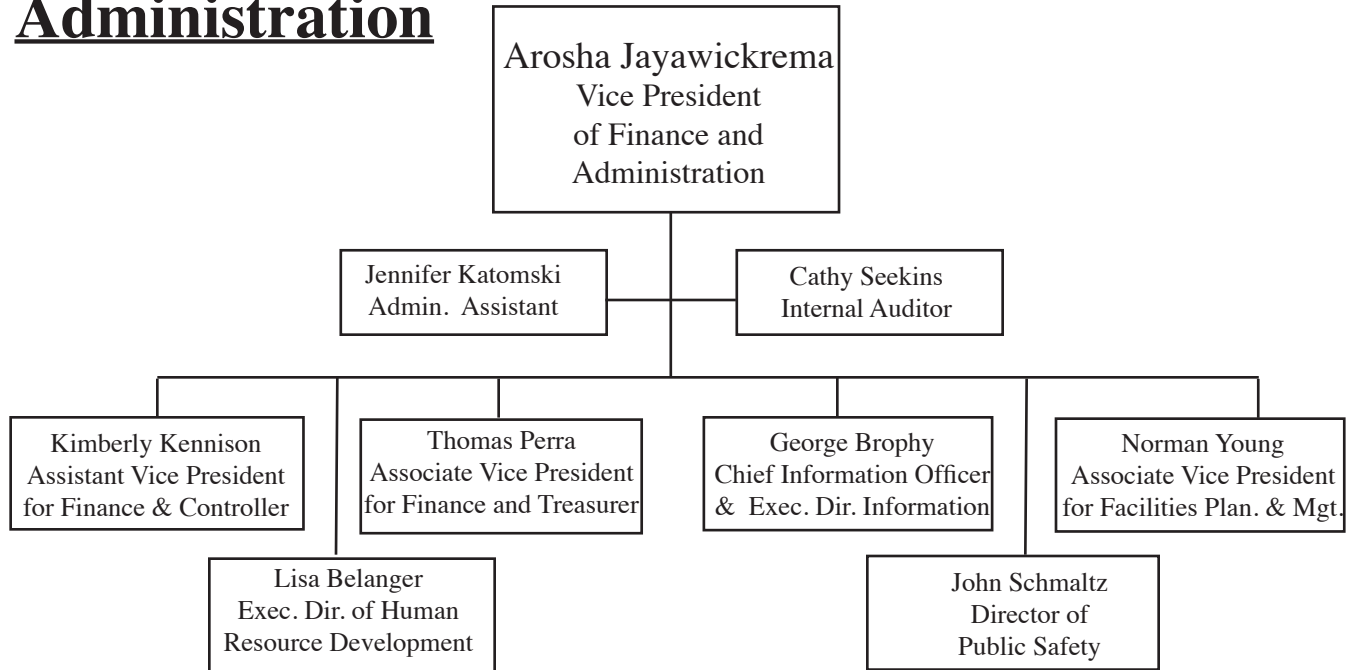
Michael Malone
Director of
Residential Life

Cindy Sanders
Assistant Dir. for Assess-
ment & Technology

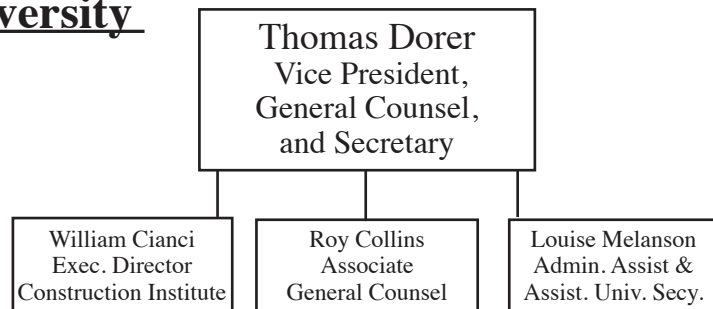
Susan Ward
Assistant Director for
Assignments & Billing

Shawn McQuillan
Assistant Director for
Comm. Development

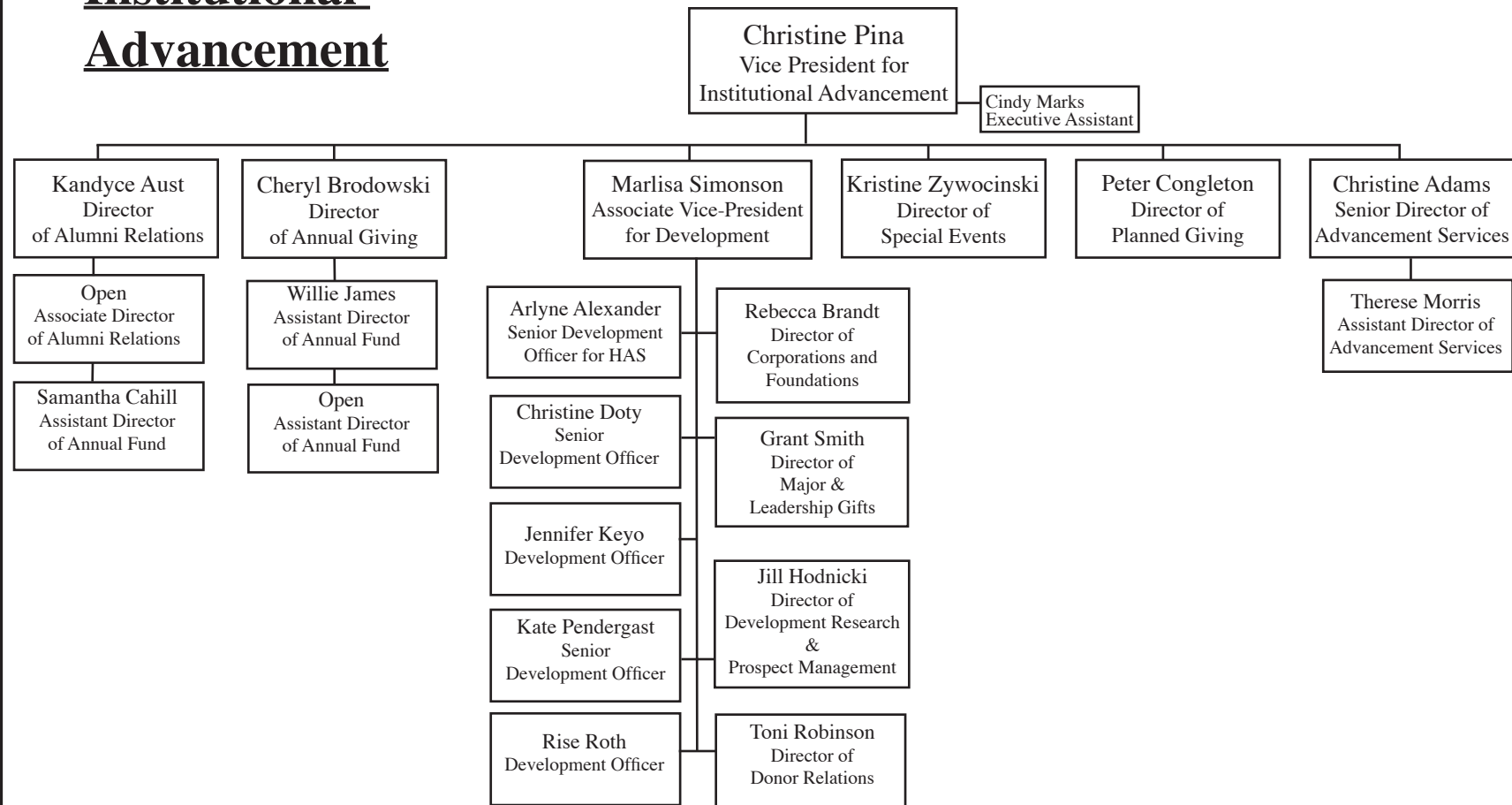
Finance and Administration



Secretary of the University



Institutional Advancement



University Relations

