

# UNIVERSITY OF HARTFORD

---

Fact Book 2014-2015

Fall Edition



Institutions have a wide variety of data and information needs. The Fact Book is intended as a general source of information about the University, which reflects data from comparable points in time, over time. The data can inform decision makers by delineating trends as well as providing context and perspective.

The Fall edition of the Fact Book is a condensed version of the full Fact Book which is published in the spring.

Historical Fact Books are available for download on our website, although they may not be accurate or consistent with current definitions and reporting practices. The University is a dynamic entity, and changes occur frequently. The figures found here may differ from those found elsewhere due to population definitions and timing of data collection. As frequently as possible definitions and notes are attached to charts to ensure that context is provided.

If there is additional information you would like to see included, please contact the Office of Institutional Effectiveness and we will make every effort to incorporate it in future editions. If you are part of a University of Hartford office looking for institutional data to support a specific business process or question that cannot be answered using the data in the Fact Book, please contact us.

## Table of Contents

University of Hartford: At a Glance-----	4
Office of Institutional Effectiveness -----	5
Admissions	
Undergraduate Admissions -----	6
Entering Student Profile-----	7
Graduate Admissions -----	10
Entering Student Profile-----	11
Enrollment	
Headcount by Level, College, Time Status -----	12
Credit Hour Comparison -----	15
Diversity -----	17
Retention -----	19
Completions	
Graduation Rate -----	20
Degree Conferral-----	21
Faculty	
Composition -----	22
Diversity -----	24
Organizational Charts	
Senior Administration -----	25
Academic Affairs -----	26
Student Affairs -----	27
Finance and Administration -----	28
Institutional Advancement -----	29
Secretary of the University -----	30

---

# UNIVERSITY OF HARTFORD

## At a Glance

Chartered: 1957

Mission: As a private university with a public purpose, we engage students in acquiring the knowledge, skills and values necessary to thrive in, and contribute to, a pluralistic, complex world.

Mailing Address: 200 Bloomfield Ave. West Hartford, CT 06118

Campus: The main campus crosses three town lines: West Hartford, Hartford and Bloomfield.

President: Walter Harrison

Level and Control: 4-year, Private not for Profit

Type: Independent, Nonsectarian, Coeducational

Housing: Residential campus

Degrees Offered: Less than one year certificate

Associate's degree

Bachelor's degree

Postbaccalaureate certificate

Master's degree

Post-master's certificate

Doctor's degree - research/scholarship

Doctor's degree - professional practice

Schools of the University: Barney School of Business

College of Arts and Sciences (A&S)

College of Education, Nursing and Health Professions (ENHP)

Hartford Art School (HAS)

The Hartt School

Hillyer College

College of Engineering, Technology, and Architecture

Athletics: Division I

Conference: America East

Mascot: Howie the Hawk

History in Brief: Visit our website to read [a brief overview of the University's founding and growth over the past 57 years](#)

Or take a moment to watch a [visual timeline](#).

# OFFICE OF INSTITUTIONAL EFFECTIVENESS

## Mission

The primary mission of the Office of Institutional Effectiveness is to support the individuals and groups who make policies and decisions affecting the University of Hartford by supplying data and information, conducting policy analysis for coordinating campus assessment/evaluation activities, and facilitating planning efforts.

## Goals of OIE

Coordination and analysis of university data for internal use to support the assessment of operations and outcomes.

Providing data and analysis for background and outcomes assessment in support of University and programmatic accreditation.

To assist the administrative and academic leadership with formative, summative, and descriptive evidence of institutional effectiveness, accountability or need.

Compiling and reporting official university data to the U.S. Department of Education, the Connecticut Office of Higher Education, and other state and federal reporting agencies as needed.

Compiling and reporting official university data for nationally recognized surveys such as those through the National Science Foundation, College Board, Peterson's, U.S. News and World Report, among others.

Serving as an educational resource for the University of Hartford community.

## Meet our Staff

Nichole Petersen

Executive Director OIE  
npetersen@hartford.edu  
860-768-5365  
CC312

Stefanie Cai

Senior Research Analyst  
mcai@hartford.edu  
860-768-4408  
CC228

Stacy Sperrazza

Research Analyst  
sperrazza@hartford.edu  
860-768-4227  
CC229

**UNIVERSITY  
OF HARTFORD**



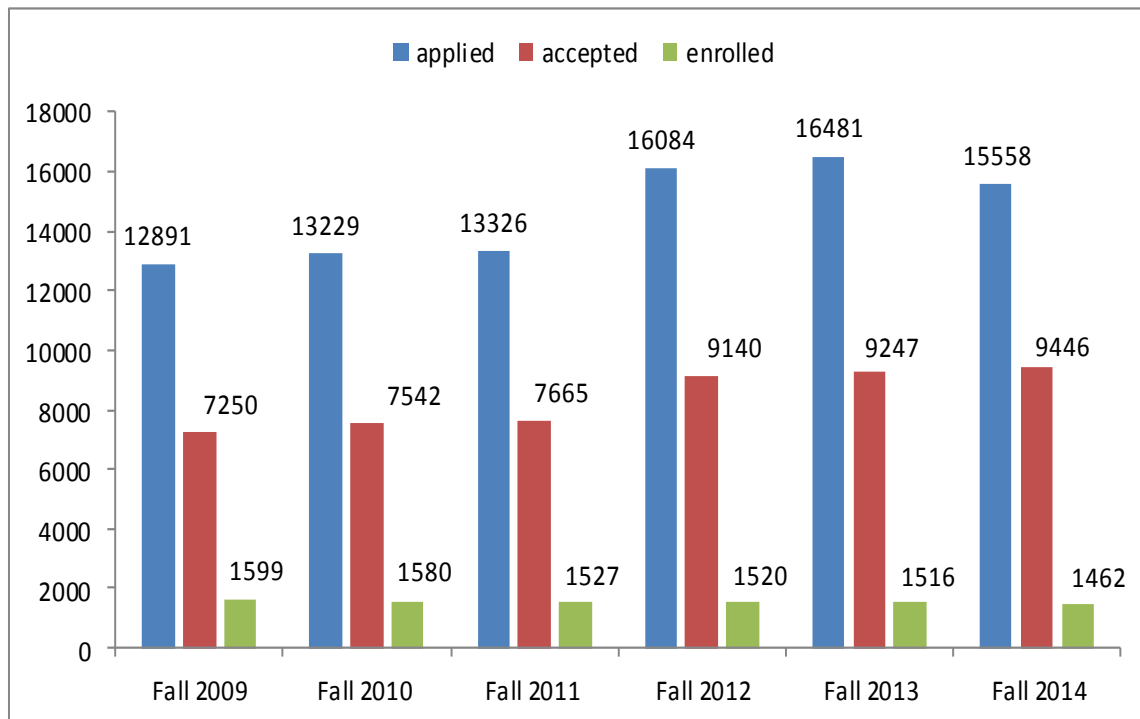
***Institutional Research has been described as an attitude of commitment to the institution's purpose in society and to the value of critical appraisal and careful investigation.***

***—Joe L. Saupe Association for Institutional Research***

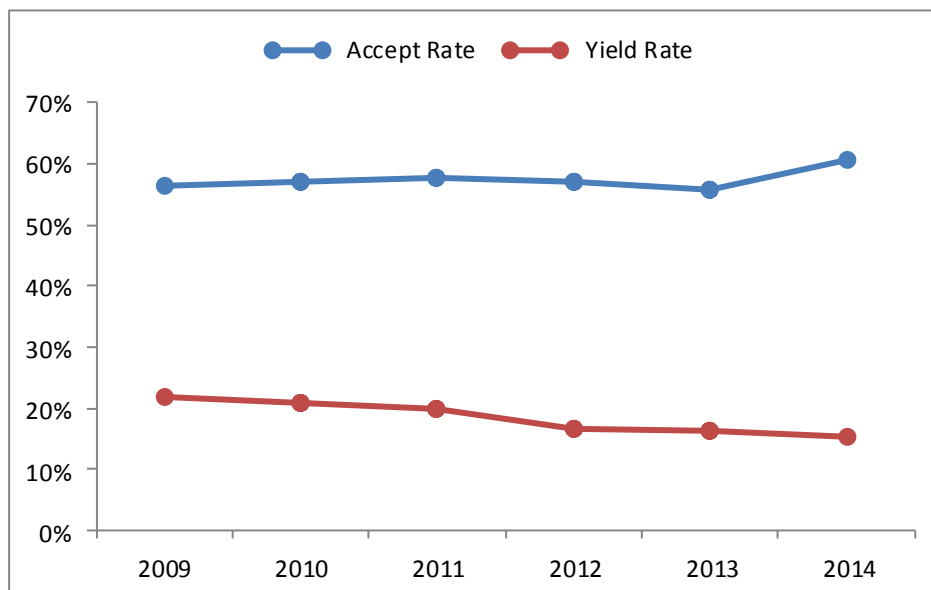
# ADMISSIONS

## Overview—Undergraduate

### New Full Time Undergraduates



### Selectivity and Yield Rate Trends



Data note: Applied, accepted and enrolled data include all new full time freshmen, full time transfer students, re-admits and fresh starts by Fall.

# ENTERING STUDENT PROFILE

## New Full Time Freshmen

### Freshmen Combined S.A.T

	2010	2011	2012	2013	2014
<i>National Average</i>	1,017	1,011	1,010	1,010	1,010
<b>All Programs</b>	<b>1,015</b>	<b>1,015</b>	<b>1,017</b>	<b>1,016</b>	<b>1,005</b>
<b>Four Year Programs</b>	<b>1,051</b>	<b>1,061</b>	<b>1,065</b>	<b>1,054</b>	<b>1,046</b>
HAS	1,035	1,038	1,039	1,026	991
A & S	1,044	1,049	1,054	1,024	1,033
Barney	1,058	1,059	1,043	1,053	1,030
ENHP	1,042	1,038	1,041	1,040	1,042
CETA	1,053	1,064	1,074	1,074	1,065
Hartt	1,117	1,117	1,096	1,132	1,097
University Studies	1,055	1,140	1,095	1,070	1,010
Hillyer	861	861	867	840	837

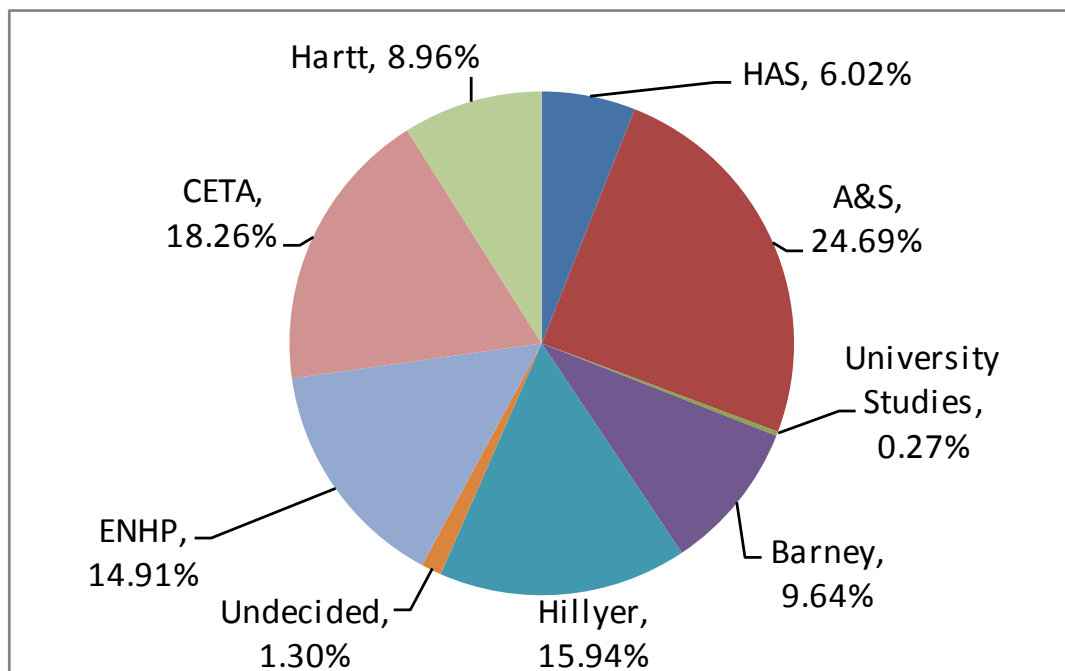
### Freshmen Math (M) and Verbal (V) S.A.T.

	2010		2011		2012		2013		2014	
	M	V	M	V	M	V	M	V	M	V
<i>National Average</i>	516	501	514	497	514	496	514	496	513	497
<b>All Programs</b>	<b>512</b>	<b>503</b>	<b>511</b>	<b>504</b>	<b>511</b>	<b>506</b>	<b>511</b>	<b>505</b>	<b>504</b>	<b>501</b>
<b>Four Year Programs</b>	<b>530</b>	<b>521</b>	<b>536</b>	<b>525</b>	<b>531</b>	<b>534</b>	<b>530</b>	<b>524</b>	<b>525</b>	<b>520</b>
HAS	515	527	509	529	510	540	501	525	481	510
A & S	517	521	521	528	526	528	508	516	510	523
Barney	540	512	548	511	530	513	536	517	522	508
ENHP	521	513	528	510	526	514	528	512	525	516
CETA	547	501	555	509	561	513	555	519	550	515
Hartt	556	563	550	567	539	557	558	574	546	550
University Studies	527	495	600	540	525	570	507	563	510	500
Hillyer	428	421	426	435	434	433	424	416	414	423

### New Full Time Undergraduate Matriculants by College

	2009	2010	2011	2012	2013	2014
Hartford Art School	101	93	76	117	83	88
College of Arts & Sciences	407	406	357	382	405	361
Barney	165	150	160	135	162	141
Hillyer College	329	243	294	277	227	233
ENHP	191	241	210	188	185	218
CETA	239	240	240	254	286	267
The Hartt School	145	180	187	148	143	131
University Studies	9	13	2	5	8	4
Undecided	13	14	1	14	17	19
<b>Total</b>	<b>1,599</b>	<b>1,580</b>	<b>1,527</b>	<b>1,520</b>	<b>1,516</b>	<b>1,462</b>

### Distribution of Fall 2014 New Full Time Undergraduate Matriculants by College



Data note: Charts reflect Fall cohort of New Full Time Matriculants. Includes freshmen, transfer, readmits, freshstarts, degree seeking and non-degree seeking students.

## Geographic Distribution of New First Time, Full Time Freshmen

Fall 2009-Fall 2014

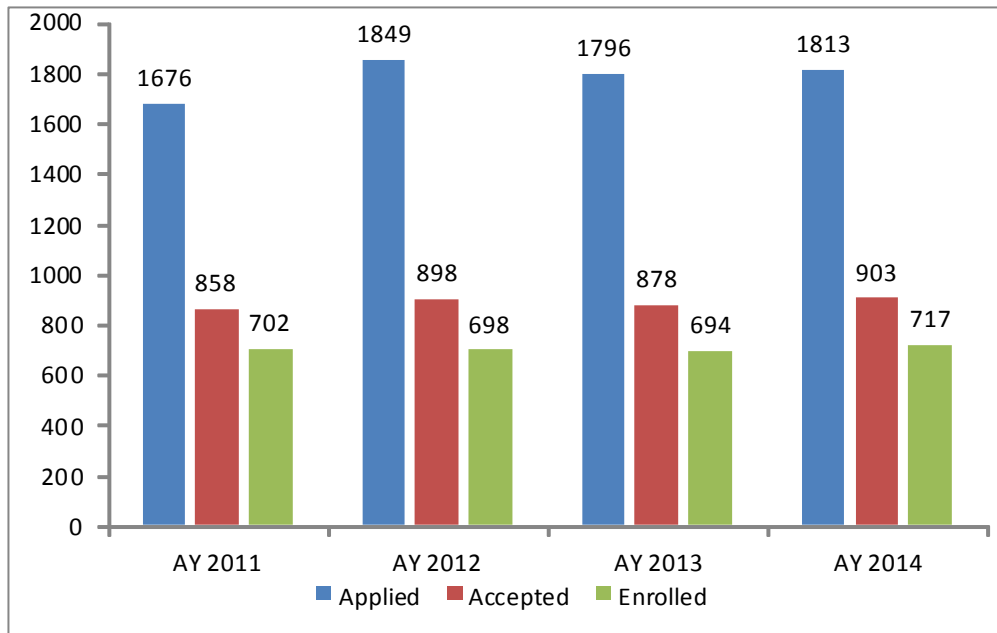
US Citizens Only						
Origin	2009	2010	2011	2012	2013	2014
Connecticut	461	462	460	462	484	486
New York	359	324	311	324	274	284
Massachusetts	195	218	199	218	147	145
New Jersey	162	139	166	139	138	106
Pennsylvania	21	38	32	38	27	24
New Hampshire	34	27	23	27	23	21
California	6	8	12	10	16	9
Maryland	16	18	13	18	14	12
Other New England States	16	31	28	23	40	38
Other States	68	58	80	58	62	45
Number of State Represented	35	34	36	33	35	36
International Students						
Origin	2009	2010	2011	2012	2013	2014
Saudi Arabia	4	7	11	22	13	7
China, People's Republic	9	6	3	7	5	4
Kuwait	0	0	5	10	2	4
Canada	2	3	1	4	2	3
Ethiopia	0	0	1	0	0	2
Ghana	1	0	2	0	0	1
India	2	1	0	2	2	1
Jamaica	1	0	3	1	3	1
Korea - South	5	4	1	3	5	1
Mexico	0	1	0	2	1	1
Pakistan	0	0	0	1	1	1
Other Countries	5	14	11	14	17	9
Number of Countries Represented	12	15	16	21	25	19

Data note: represents first time full time freshmen. Excludes ELI, part time, new transfer students as well as readmits and fresh starts. Those international students with no country listed were excluded from totals.

# ADMISSIONS

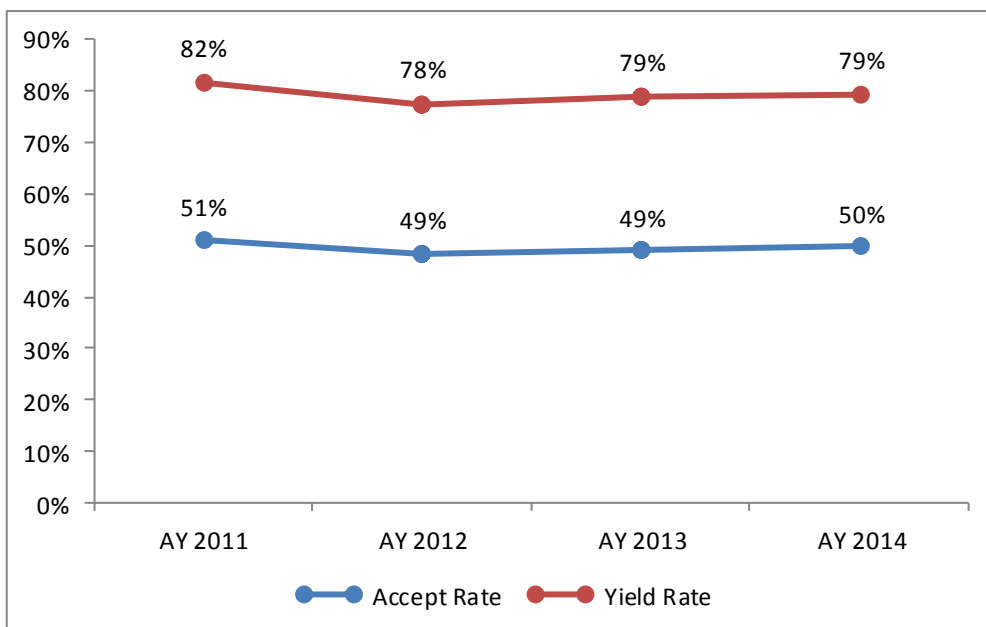
## Overview—Graduate

### New Graduate Students



Data note: Includes new graduate students who applied, were accepted, and enrolled into a graduate program for each academic year. The data may not match census data if applications, acceptances, or enrollments were processed after census closing date for the fall or spring semesters. Excludes non-degree students.

### Selectivity and Yield Rates



Academic Year = summer through spring.

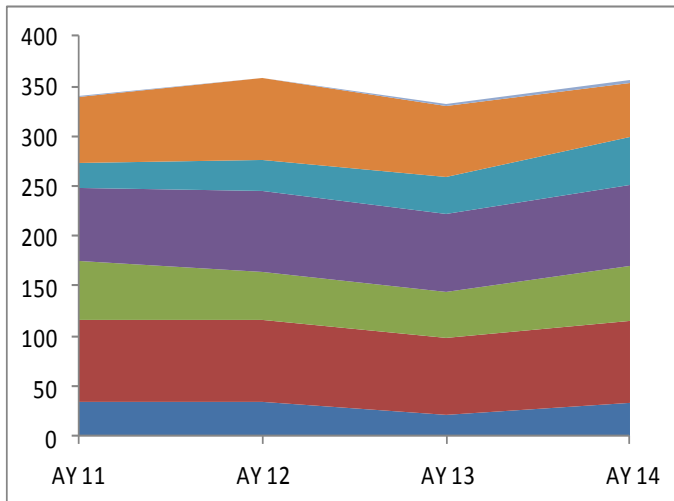
# ENTERING STUDENT PROFILE

## New Graduate Students

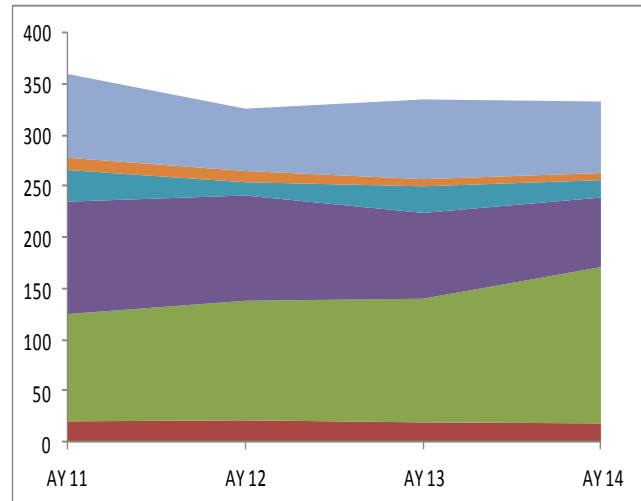
### New Graduate Students—By College and Academic Year

College		2011	2012	2013	2014
Hartford Art School	FT	34	34	21	33
	PT	0	0	0	0
College of Arts & Sciences	FT	82	82	77	82
	PT	20	21	19	18
Barney School of Business	FT	59	48	46	55
	PT	105	117	121	153
ENHP	FT	73	81	78	81
	PT	110	103	84	68
CETA	FT	25	31	37	48
	PT	31	13	26	17
The Hartt School	FT	66	82	71	54
	PT	12	11	7	7
Nonmatric	FT	1	0	2	3
	PT	82	61	78	70
Total	FT	340	358	332	356
	PT	360	326	335	333

New Full Time Graduate Enrollment



New Part Time Graduate Enrollment



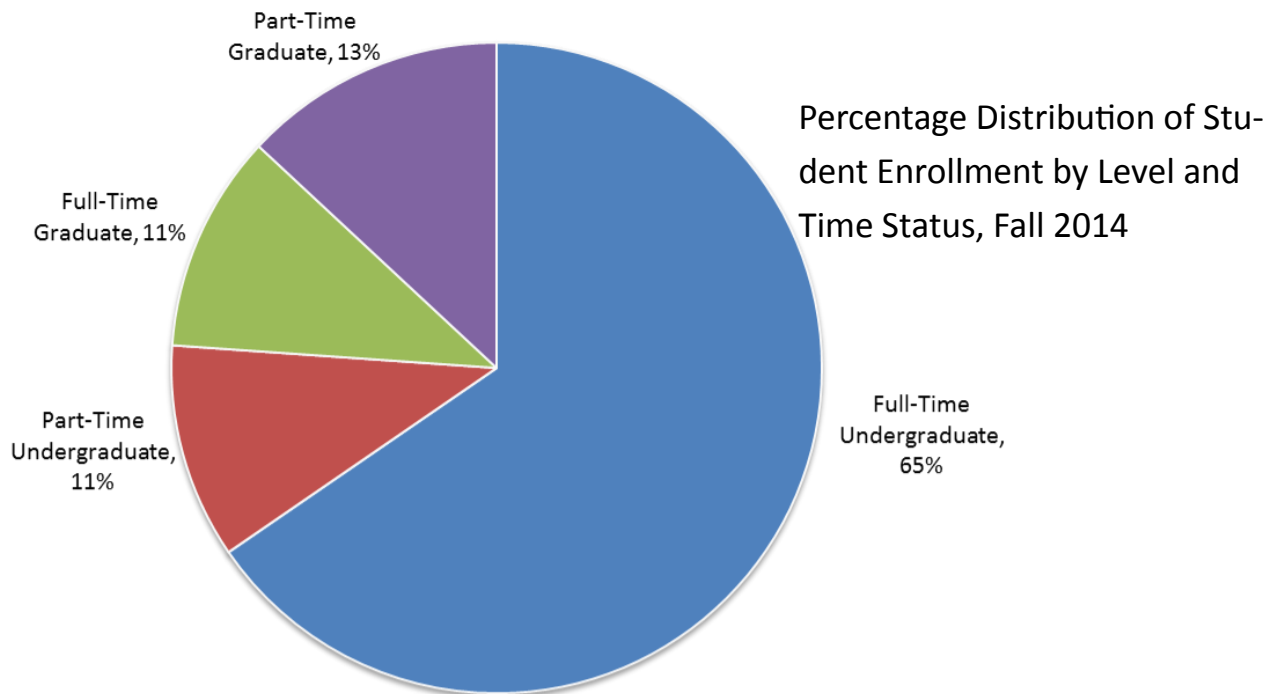
■ HAS ■ A&S ■ Barney ■ ENHP ■ CETA ■ Hartt ■ Nonmatrics

Data note: includes new graduate students for the fall and spring semesters only as of census date. Excludes ELI.

# ENROLLMENT

## Fall Headcount by Level and Time Status

	2010	2011	2012	2013	2014
<b>Undergraduate</b>					
Full Time	4,694	4,596	4,541	4,545	4,492
Part Time	804	783	839	756	734
<b>Total Undergraduate</b>	<b>5,498</b>	<b>5,379</b>	<b>5,380</b>	<b>5,301</b>	<b>5,226</b>
<b>Graduate</b>					
Full Time	700	727	692	719	743
Part time	982	948	920	915	897
<b>Total Graduate</b>	<b>1,682</b>	<b>1,675</b>	<b>1,612</b>	<b>1,634</b>	<b>1,640</b>
<b>All Students</b>					
Full Time	5,394	5,323	5,233	5,264	5,235
Part Time	1,786	1,731	1,759	1,671	1,631
<b>Total All Students</b>	<b>7,180</b>	<b>7,054</b>	<b>6,992</b>	<b>6,935</b>	<b>6,866</b>



Data note: All students enrolled in courses. Includes ELI, Non-degree, High School, and Consortium students

# ENROLLMENT

## Fall Headcount by College, Level, and Time Status

	Fall 2011	Fall 2012	Fall 2013	Fall 2014	Fall 2011	Fall 2012	Fall 2013	Fall 2014
	The Hartford Art School				College of Arts and Sciences			
<b>Full Time</b>								
Undergraduate	279	300	305	307	1202	1164	1174	1140
Graduate	60	52	52	54	169	160	160	172
<b>Total Full Time</b>	<b>339</b>	<b>352</b>	<b>357</b>	<b>361</b>	<b>1,371</b>	<b>1,324</b>	<b>1,334</b>	<b>1,312</b>
<b>Part Time</b>								
Undergraduate	33	27	21	19	87	83	74	68
Graduate	0	0	0	1	137	142	135	133
<b>Total Part Time</b>	<b>33</b>	<b>27</b>	<b>21</b>	<b>20</b>	<b>224</b>	<b>225</b>	<b>209</b>	<b>201</b>
<b>TOTAL</b>	<b>372</b>	<b>379</b>	<b>378</b>	<b>381</b>	<b>1,595</b>	<b>1,549</b>	<b>1,543</b>	<b>1,513</b>
	Barney School				Hillyer College			
<b>Full Time</b>								
Undergraduate	548	517	513	503	469	449	414	401
Graduate	91	73	86	78	0	0	0	0
<b>Total Full Time</b>	<b>639</b>	<b>590</b>	<b>599</b>	<b>581</b>	<b>469</b>	<b>449</b>	<b>414</b>	<b>401</b>
<b>Part Time</b>								
Undergraduate	64	66	65	44	4	3	6	6
Graduate	341	352	353	394	0	0	0	0
<b>Total Part Time</b>	<b>405</b>	<b>418</b>	<b>418</b>	<b>438</b>	<b>4</b>	<b>3</b>	<b>6</b>	<b>6</b>
<b>TOTAL</b>	<b>1,044</b>	<b>1,008</b>	<b>1,017</b>	<b>1,019</b>	<b>473</b>	<b>452</b>	<b>420</b>	<b>407</b>
	ENHP				CETA			
<b>Full Time</b>								
Undergraduate	689	681	635	653	759	802	866	895
Graduate	194	208	235	218	59	57	64	117
<b>Total Full Time</b>	<b>883</b>	<b>889</b>	<b>870</b>	<b>871</b>	<b>818</b>	<b>859</b>	<b>930</b>	<b>1,012</b>
<b>Part Time</b>								
Undergraduate	122	128	111	113	78	75	79	65
Graduate	268	230	235	207	105	90	91	92
<b>Total Part Time</b>	<b>390</b>	<b>358</b>	<b>346</b>	<b>320</b>	<b>183</b>	<b>165</b>	<b>170</b>	<b>157</b>
<b>TOTAL</b>	<b>1,273</b>	<b>1,247</b>	<b>1,216</b>	<b>1,191</b>	<b>1,001</b>	<b>1,024</b>	<b>1,100</b>	<b>1,169</b>

	Fall 2011	Fall 2012	Fall 2013	Fall 2014	Fall 2011	Fall 2012	Fall 2013	Fall 2014
	The Hartt School				Non-degree			
<b>Full Time</b>								
Undergraduate	569	565	560	528	2	3	5	1
Graduate	147	139	118	99	1	1	3	2
<b>Total Full Time</b>	<b>716</b>	<b>704</b>	<b>678</b>	<b>627</b>	<b>3</b>	<b>4</b>	<b>8</b>	<b>3</b>
<b>Part Time</b>								
Undergraduate	21	24	26	28	221	272	218	227
Graduate	37	36	36	30	60	70	65	40
<b>Total Part Time</b>	<b>58</b>	<b>60</b>	<b>62</b>	<b>58</b>	<b>281</b>	<b>342</b>	<b>283</b>	<b>267</b>
<b>TOTAL</b>	<b>774</b>	<b>764</b>	<b>740</b>	<b>685</b>	<b>284</b>	<b>346</b>	<b>291</b>	<b>270</b>
	<b>University Studies</b>				<b>All Credit Bearing</b>			
<b>Full Time</b>								
Undergraduate	35	22	23	18	4,552	4,503	4,495	4,446
Graduate	0	0	0	0	721	690	718	740
<b>Total Full Time</b>	<b>35</b>	<b>22</b>	<b>23</b>	<b>18</b>	<b>5,273</b>	<b>5,193</b>	<b>5,213</b>	<b>5,180</b>
<b>Part Time</b>								
Undergraduate	153	161	154	164	783	839	754	734
Graduate	0	0	0	0	948	920	915	897
<b>Total Part Time</b>	<b>153</b>	<b>161</b>	<b>154</b>	<b>164</b>	<b>1,731</b>	<b>1,759</b>	<b>1,669</b>	<b>1,637</b>
<b>TOTAL</b>	<b>188</b>	<b>183</b>	<b>177</b>	<b>182</b>	<b>7,004</b>	<b>6,952</b>	<b>6,882</b>	<b>6,817</b>
	<b>ELI</b>				50	40	53	49
	<b>Total University</b>				<b>7,054</b>	<b>6,992</b>	<b>6,935</b>	<b>6,866</b>

Data note: College numbers include all degree seeking students in credit bearing courses. Non-degree includes all students in credit bearing courses but who are not matriculated into a degree program, which includes consortium, high school, and other non-degree students. ELI includes those students in noncredit bearing courses regardless of program.

# ENROLLMENT

## Credit Hour Comparison

	Fall 2011	Fall 2012	Fall 2013	Fall 2014	Fall 2011	Fall 2012	Fall 2013	Fall 2014
	The Hartford Art School				College of Arts and Sciences			
<b>Full Time</b>								
Undergraduate	2,990.5	3,050.5	38,98.5	3,981.0	29,933.0	29,531.0	28,706.0	28,293.0
Graduate	285.0	239.0	250.0	243.0	1,940.0	1,869.0	1854.0	2024.0
<b>Total Full Time</b>	<b>3,275.5</b>	<b>3,289.5</b>	<b>4,148.5</b>	<b>4,224.0</b>	<b>31,873.0</b>	<b>31,400.0</b>	<b>30,560.0</b>	<b>30,317.0</b>
<b>Part Time</b>								
Undergraduate	200.5	178.0	149.0	169.5	1,754.0	1,985.0	1,818.0	1,756.5
Graduate	6.0	6.0	3.0	0.0	421.0	394.0	394.0	382.0
<b>Total Part Time</b>	<b>206.5</b>	<b>184.0</b>	<b>152.0</b>	<b>169.5</b>	<b>2,175.0</b>	<b>2,379.0</b>	<b>2,212.0</b>	<b>2,138.5</b>
<b>TOTAL for School</b>	<b>3,482.0</b>	<b>3,473.5</b>	<b>4,300.5</b>	<b>4,393.5</b>	<b>34,048.0</b>	<b>33,779.0</b>	<b>32,772.0</b>	<b>32,455.5</b>
	Barney School				Hillyer College			
<b>Full Time</b>								
Undergraduate	6,350.0	6,080.0	6,045.0	5,805.0	7,067.0	6,701.0	6,137.0	5,870.0
Graduate	942.0	772.5	996.0	820.5	0.0	0.0	0.0	0.0
<b>Total Full Time</b>	<b>7,292.0</b>	<b>6,852.5</b>	<b>7,041.0</b>	<b>6,625.5</b>	<b>7,067.0</b>	<b>6,701.0</b>	<b>6,137.0</b>	<b>5,870.0</b>
<b>Part Time</b>								
Undergraduate	434.0	409.0	363.0	347.0	34.0	13.0	60.0	32.0
Graduate	1,662.0	1,755.0	1,846.5	2,017.5	0.0	0.0	0.0	0.0
<b>Total Part Time</b>	<b>2,096.0</b>	<b>2,164.0</b>	<b>2,209.5</b>	<b>2,364.5</b>	<b>34.0</b>	<b>13.0</b>	<b>60.0</b>	<b>32.0</b>
<b>TOTAL for School</b>	<b>9,388.0</b>	<b>9,016.5</b>	<b>9,250.5</b>	<b>8,990.0</b>	<b>7,101.0</b>	<b>6,714.0</b>	<b>6,197.0</b>	<b>5,902.0</b>
	ENHP				CETA			
<b>Full Time</b>								
Undergraduate	3,437.0	3,401.0	3,055.5	2,998.0	7,567.0	7,738.0	8,047.0	8,886.0
Graduate	2,896.0	3,133.0	3,365.0	3,223.0	627.0	674.0	731.0	1223.0
<b>Total Full Time</b>	<b>6,333.0</b>	<b>6,534.0</b>	<b>6,420.5</b>	<b>6,221.0</b>	<b>8,194.0</b>	<b>8,412.0</b>	<b>8,778.0</b>	<b>10,109.0</b>
<b>Part Time</b>								
Undergraduate	584.5	607.0	539.0	518.0	402.0	377.0	417.0	317.0
Graduate	1,248.0	1,019.0	1,104.0	959.0	281.0	225.0	309.0	265.0
<b>Total Part Time</b>	<b>1,832.5</b>	<b>1,626.0</b>	<b>1,643.0</b>	<b>1,477.0</b>	<b>683.0</b>	<b>602.0</b>	<b>726.0</b>	<b>582.0</b>
<b>TOTAL for School</b>	<b>8,165.5</b>	<b>8,160.0</b>	<b>8,063.5</b>	<b>7,698.0</b>	<b>8,877.0</b>	<b>9,014.0</b>	<b>9,504.0</b>	<b>10,691.0</b>

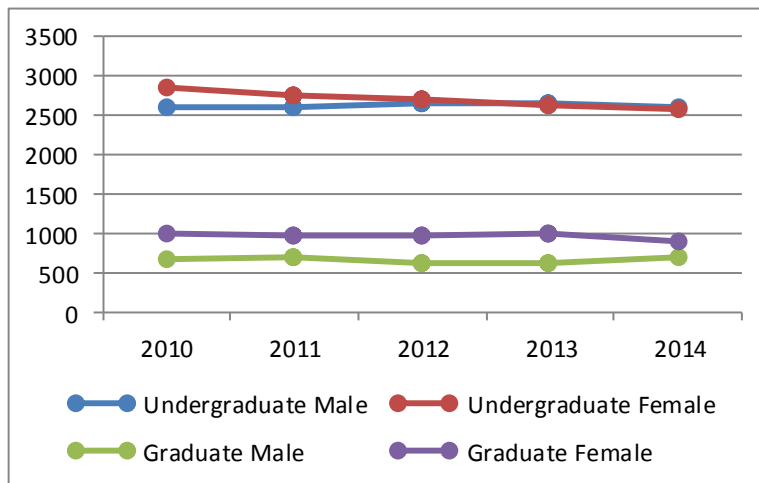
	Fall 2011	Fall 2012	Fall 2013	Fall 2014	Fall 2011	Fall 2012	Fall 2013	Fall 2014
	The Hartt School				All University Curriculum			
Full Time								
Undergraduate	7,492.5	7,327.0	7,275.0	6,875.5	5,450.0	5,607.0	5,723.0	5,799.0
Graduate	1,598.5	1,554.5	1,293.0	1,121.0	0.0	0.0	0.0	0.0
Total Full Time	9,091.0	8,881.5	8,568.0	7,996.5	5,450.0	5,607.0	5,723.0	5,799.0
Part Time								
Undergraduate	134.0	163.5	125.5	136.5	237.0	278.0	285.0	257.0
Graduate	98.0	112.0	104.0	104.0	0.0	0.0	0.0	0.0
Total Part Time	232.0	275.5	229.5	240.5	237.0	278.0	285.0	257.0
TOTAL for School	9,323.0	9,157.0	8,797.5	8,237.0	5,687.0	5,885.0	6,008.0	6,056.0
	University Studies				Total All Schools			
Full Time								
Undergraduate	287.5	223.0	216.5	212.0	70,574.5	69,658.5	69,103.5	68,723.5
Graduate	0.0	0.0	0.0	0.0	8,288.5	8,242.0	8,489.0	8,654.5
Total Full Time	287.5	223.0	216.5	212.0	78,863.0	77,900.5	77,592.5	77,378.0
Part Time								
Undergraduate	350.0	353.0	336.5	321.0	4,130.0	4,363.5	4,093.0	3,845.5
Graduate	0.0	0.0	0.0	0.0	3,716.0	3,511.0	3,760.5	3,727.5
Total Part Time	350.0	353.0	336.5	312.0	7,846.0	7,874.5	7,853.5	7,573.0
TOTAL for School	637.5	576.0	553.0	524.0				
	Total All Schools				86,709.0	85,775.0	85,446.0	84,947.0
	Consortium				9.0	45.0	9.0	4.0
	Total University				86,718.0	85,820.0	85,455.0	84,951.0

# ENROLLMENT

## Diversity

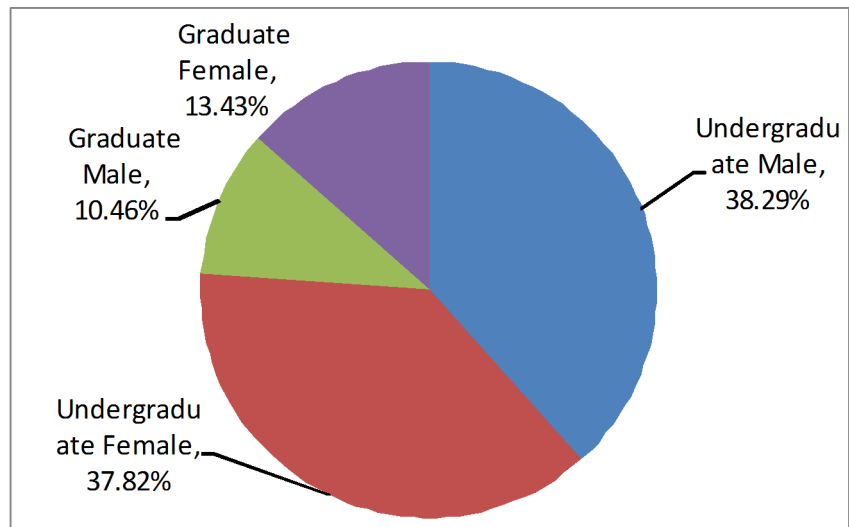
### Fall Enrollment Gender Trends

		2010	2011	2012	2013	2014
Undergraduate	Male	2629	2613	2664	2676	2629
	Female	2869	2766	2716	2624	2597
Graduate	Male	680	701	652	637	718
	Female	1008	974	960	995	922



### Fall 2014 Enrollment Distribution by Gender and Level

Data note: Gender data includes all students—degree seeking, non-degree (consortium, high school, ELI, etc). Data for 2013—1 undergraduate and 2 graduate students missing gender data



## Fall 2014 Enrollment by Race and Ethnicity, Student Level and Time Status

	Non-Resident Alien	Asian	Black or African American	Hispanic or Latino	American Indian Native Alaskan	Two or more rac- es	Native Hawaiian or Pacific Islander	White	Unknown	Total
<b>Undergraduate</b>										
Full Time	306	146	664	467	15	120	4	2,591	179	4,492
Part Time	11	16	89	47	1	10	0	328	232	734
<b>Total</b>	<b>317</b>	<b>162</b>	<b>753</b>	<b>514</b>	<b>16</b>	<b>130</b>	<b>4</b>	<b>2,919</b>	<b>411</b>	<b>5,226</b>
<b>Graduate</b>										
Full Time	173	25	32	53	0	10	0	422	28	743
Part Time	29	45	80	48	0	6	1	609	79	897
<b>Total</b>	<b>202</b>	<b>70</b>	<b>112</b>	<b>101</b>	<b>0</b>	<b>16</b>	<b>1</b>	<b>1,031</b>	<b>107</b>	<b>1,640</b>
<b>All Students</b>										
Full Time	479	171	696	520	15	130	4	3,013	207	5,235
Part Time	40	61	169	95	1	16	1	937	311	1,631
<b>Total University</b>	<b>519</b>	<b>232</b>	<b>865</b>	<b>615</b>	<b>16</b>	<b>146</b>	<b>5</b>	<b>3,950</b>	<b>518</b>	<b>6,866</b>

Data note: Race and ethnicity categories mirror reporting requirements for the National Center for Educational Statistics (NCES).

Table above: includes entire student population: degree seeking and non-degree seeking (ELI, high school, consortium students, etc) by level and time status.

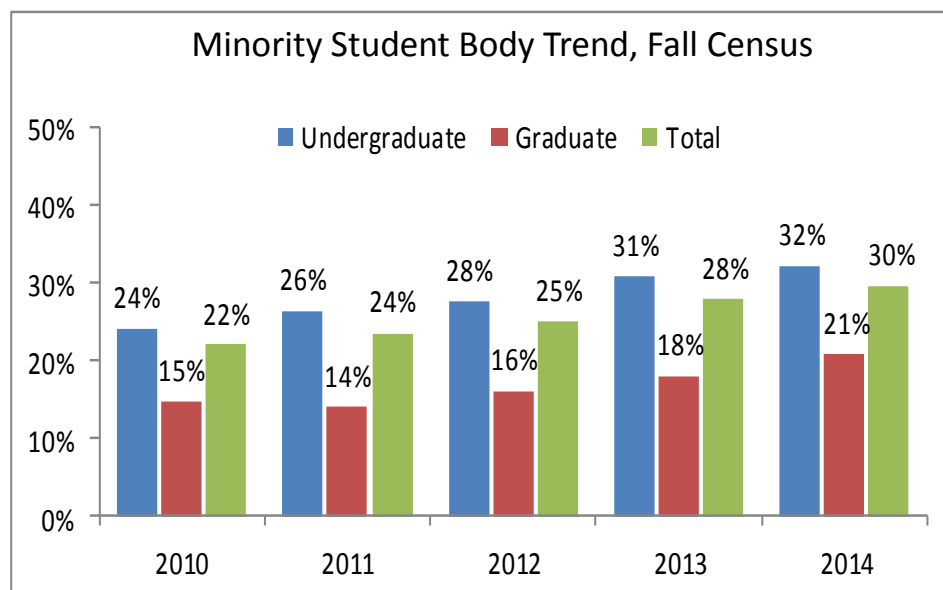


Chart to the right: includes U.S. Citizens only, degree and non-degree seeking (ELI, high school and consortium students, etc.). Minority Student Body includes all race and ethnicities excluding those that identified as white as well as those for whom no ethnicity was recorded (unknown and/or no reply).

# ENROLLMENT

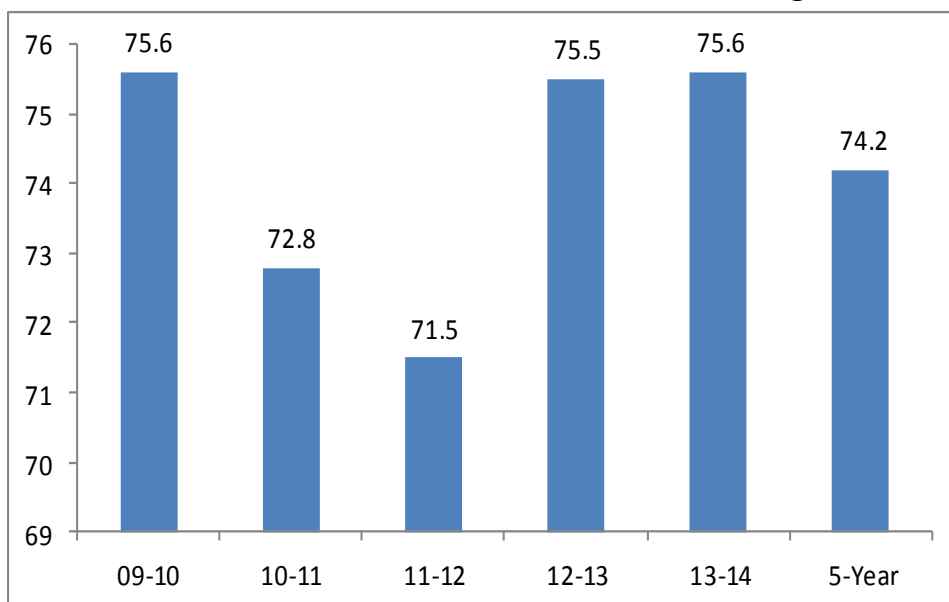
## Retention

### First to Second Year Retention Rate by College

#### Fall Cohorts 2009-2013

	2009	2010	2011	2012	2013	5-Year
<b>All Programs</b>	<b>73.3</b>	<b>71.7</b>	<b>67.6</b>	<b>72.2</b>	<b>73.9</b>	<b>71.7</b>
<b>All Four-Year</b>	<b>75.6</b>	<b>72.8</b>	<b>71.5</b>	<b>75.5</b>	<b>75.6</b>	<b>74.2</b>
Hartford Art School	77.0	82.6	77.2	87.8	81.1	<b>81.1</b>
Arts & Sciences	70.6	65.0	62.3	71.9	71.0	<b>68.2</b>
Barney School	69.4	77.2	68.1	65.4	69.0	<b>69.8</b>
ENHP	82.0	72.3	72.7	73.5	76.1	<b>75.3</b>
CETA	78.0	74.8	73.4	75.6	79.4	<b>76.2</b>
The Hartt School	85.0	82.5	84.1	86.7	85.3	<b>84.7</b>
University Studies	50.0	83.3	100.0	50.0	66.7	<b>70.0</b>
<b>All Two-Year</b>	<b>65.7</b>	<b>65.8</b>	<b>53.1</b>	<b>60.1</b>	<b>65.7</b>	<b>62.1</b>
Hillyer	65.7	65.8	53.1	60.1	65.7	<b>62.1</b>

### First to Second Year Retention in Four-Year Programs



After a period of downward trending retention numbers have climbed for the past two cohorts. While still below peer group the overall improvement is worthy of note.

Data note: numbers reflect IPEDS calculation. Cohort includes first time, full time, degree seeking students enrolled in the fall that were enrolled in the subsequent fall at any status or degree type.

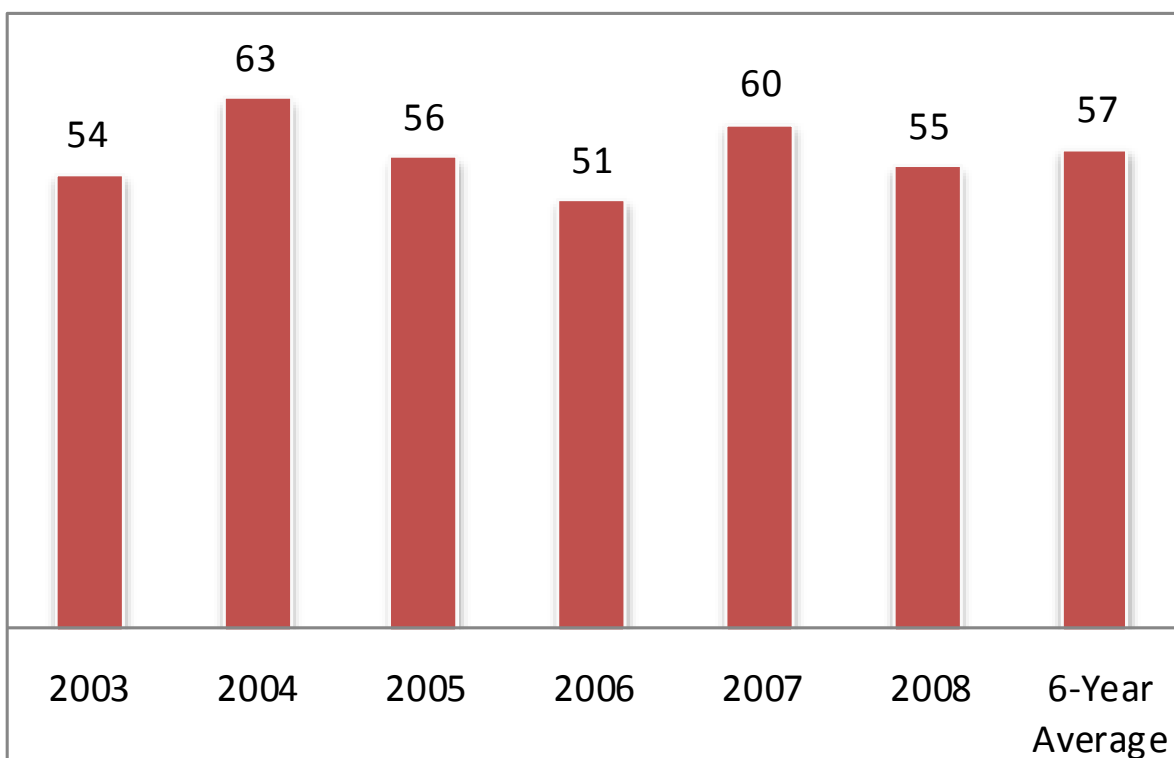
# COMPLETIONS

## Graduation Rate

6-year (150%) Graduation Rate by Fall Cohort by College and Degree

	2003	2004	2005	2006	2007	2008	6-Year Average
<b>Total University</b>	<b>53</b>	<b>58</b>	<b>55</b>	<b>48</b>	<b>56</b>	<b>54</b>	<b>54</b>
<b>All Four –Year</b>	<b>54</b>	<b>63</b>	<b>56</b>	<b>51</b>	<b>60</b>	<b>55</b>	<b>57</b>
HAS	69	67	67	60	76	63	<b>67</b>
A & S	45	56	48	46	50	47	<b>49</b>
Barney	53	65	60	47	52	54	<b>55</b>
ENHP	62	70	69	54	61	56	<b>62</b>
CETA	49	67	50	52	64	56	<b>56</b>
Hartt	64	61	63	57	70	70	<b>64</b>
University Studies	64	82	73	67	50	50	<b>64</b>
<b>All Two-Year</b>	<b>53</b>	<b>47</b>	<b>52</b>	<b>41</b>	<b>46</b>	<b>50</b>	<b>48</b>
Hillyer	53	47	52	41	46	50	<b>48</b>

All Four-Year Programs 6-year (150%) Graduation Rate by Fall Cohort



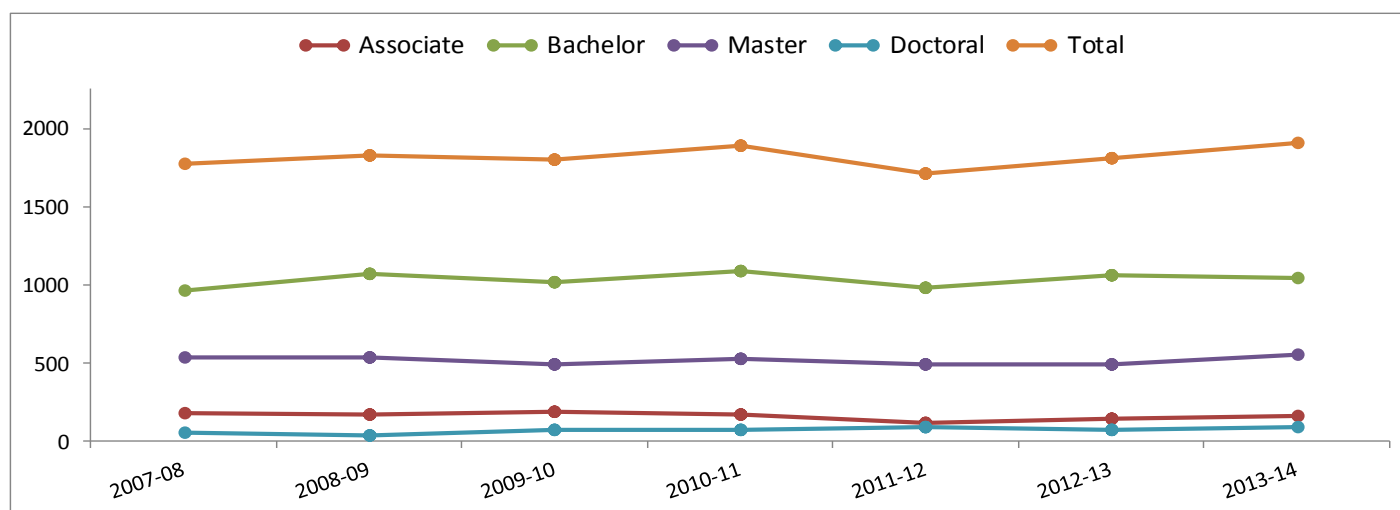
# COMPLETIONS

## Degree Conferral

Academic Year	Certificate	Associate	Bachelor	Master	Doctoral	Total
1995-96	12	87	735	567	15	1,416
1996-97	24	80	746	461	17	1,328
1997-98	24	65	778	403	21	1,291
1998-99	6	130	807	474	15	1,432
1999-00	7	120	928	416	28	1,499
2000-01	5	148	806	457	34	1,450
2001-02	5	194	894	455	29	1,577
2002-03	8	174	948	443	50	1,623
2003-04	24	178	911	410	49	1,572
2004-05	32	172	951	465	44	1,664
2005-06	38	151	992	502	53	1,736
2006-07	37	165	1025	501	35	1,763
2007-08	39	173	969	532	55	1,768
2008-09	21	162	1,072	528	37	1,820
2009-10	34	186	1,016	489	69	1,794
2010-11	32	168	1,094	523	72	1,889
2011-12	31	122	980	496	84	1,713
2012-13	51	134	1,060	497	67	1,809
2013-14	59	156	1,049	552	92	1,908

Despite a dip in 2011-2012 the University has shown strong gains in the number of degrees awarded. Some of this is a function of a growing number of single students earning multiple degrees but also there have been gains in the number of doctoral and bachelors degrees awarded (40%+ and 8%+ since 2007 respectively).

Data note: Degrees awarded by academic year (June—May). Data from 2007 forward has been revised for this edition. The new calculation counts students for each degree earned during that academic year. Therefore if a student earns both an AS and a BS in that academic year the student is counted twice. In addition, in past editions the numbers were frozen in May but there were a significant number of back dated grads. Going forward these numbers will be updated in the Fall to capture this population. Masters includes MA/MS, CAGS, Art DP, Specialist Diploma, and 6th Year Certificates.



# FACULTY

## Composition

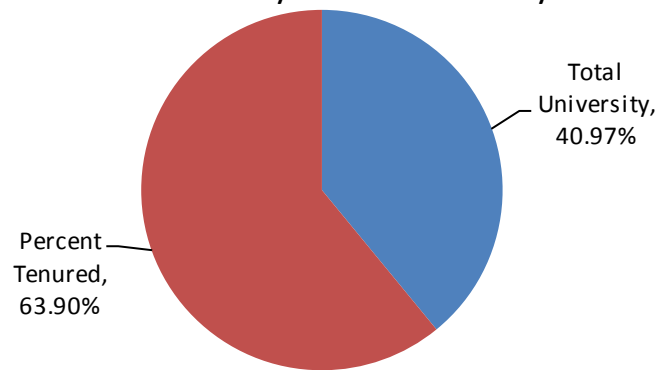
	2010	2011	2012	2013	2014
<b>Total Full Time Faculty</b>	<b>347</b>	<b>347</b>	<b>346</b>	<b>343.5</b>	<b>350</b>
	<b>Tenure Status</b>				
Tenured	205	212	207	216	224
Untenured	142	135	139	127.5	126
	<b>Rank</b>				
Professor	78	83.5	89.5	93.5	99
Associate Professor	138	137	137	138	136
Assistant Professor	107	101.5	108.5	102	82
Other	24	25	11	10	32
	<b>Gender</b>				
Female	135	134	137	138	142
Male	212	213	209	205.5	208
	<b>College</b>				
Hartford Art School	25.0	22.0	25.0	28.0	28
Arts & Sciences	116.8	117.0	112.0	108.8	110.33
Barney	37.5	39.0	37.0	36.0	37
Hillyer	36.2	38.0	38.0	35.2	35.17
ENHP	37.5	35.0	38.0	42.5	40.5
CETA	37.0	37.0	37.0	36.0	41
The Hartt School	54.0	55.0	55.0	55.0	56
Office of the Provost	1.0	1.0	2.0	1.0	1
University Studies	1.5	2.0	1.5	1.0	1
	<b>Average Salary by Rank</b>				
Professor	\$ 88,905	\$ 89,909	\$ 91,249	\$ 91,522	\$ 92,551
Associate Professor	\$ 71,309	\$ 72,158	\$ 72,354	\$ 72,535	\$ 73,462
Assistant Professor	\$ 61,923	\$ 60,938	\$ 62,961	\$ 63,740	\$ 64,308
Other	\$ 71,085	\$ 71,928	\$ 73,784	\$ 74,943	\$ 76,040

Data note: Includes Full Time faculty only.

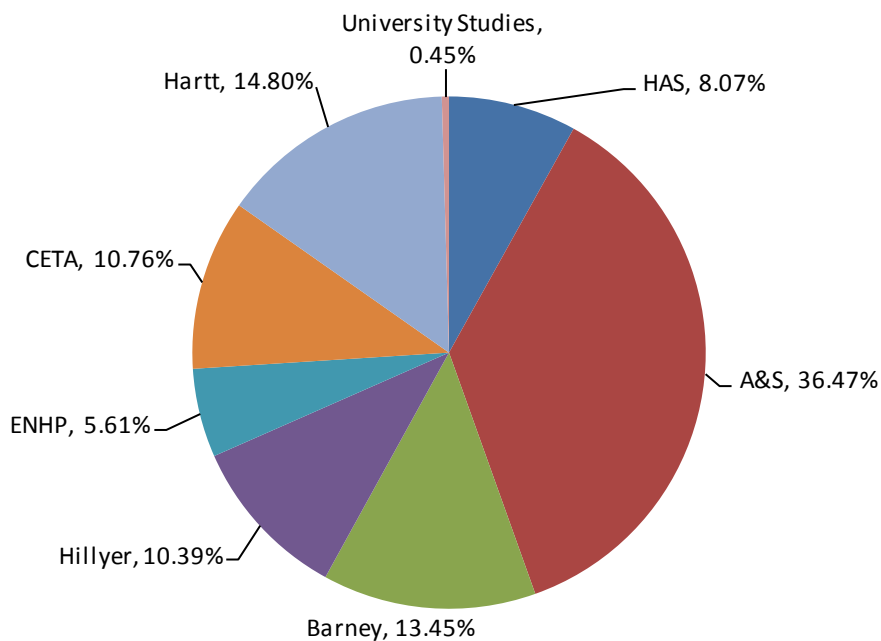
## Full Time Faculty by Tenure Status and College

	Tenure	Total
Hartford Art School	18	28
Arts & Sciences	81.33	110.33
Barney	30	37
Hillyer	23.17	35.17
ENHP	12.5	40.5
CETA	24	41
The Hartt School	33	56
University Studies	1	1
<b>Total</b>	<b>223</b>	<b>349</b>

Tenured Faculty as a Percent of all University Full Time Faculty



Distribution of Full Time Tenured Faculty by College

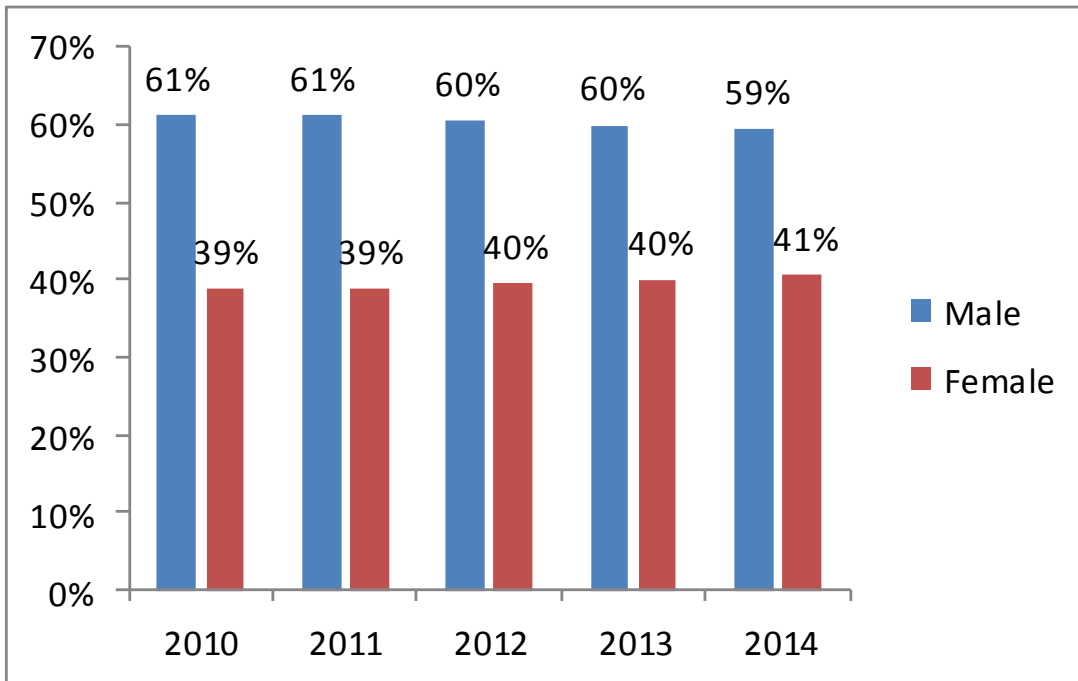


Data note: Table and chart excludes Office of the Provost FT Faculty. Revised 12/14 to reflect accurate CETA tenured faculty total.

# FACULTY

## Diversity

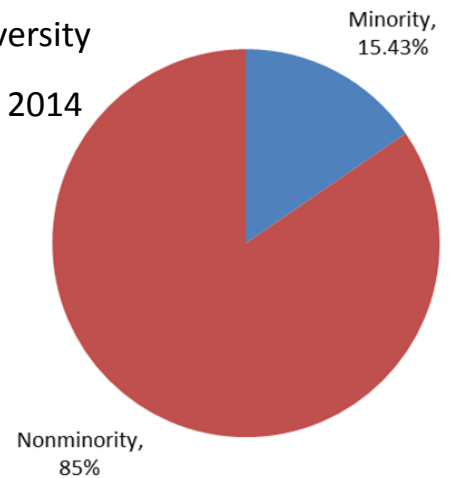
Full Time Faculty Gender Trends



Minority Distribution Total

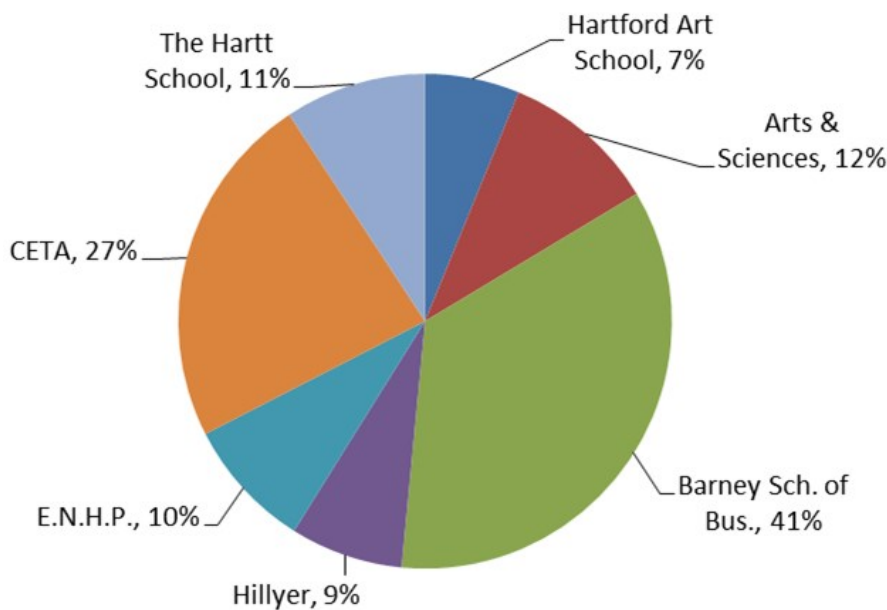
University

Fall 2014



Percent of Minority Faculty by College

Fall 2014

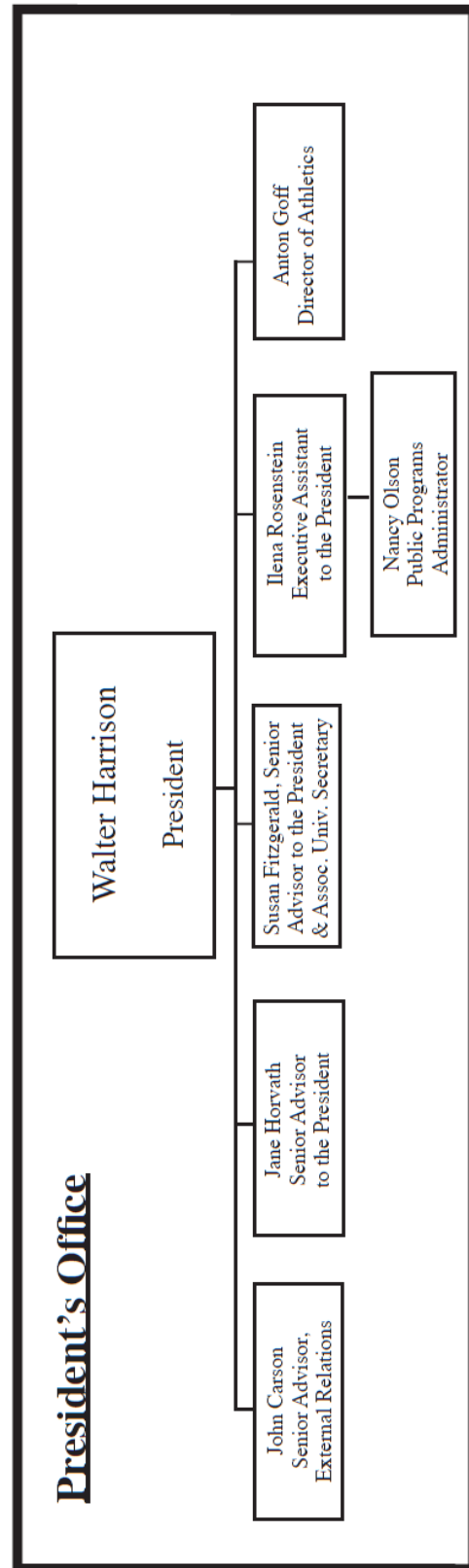
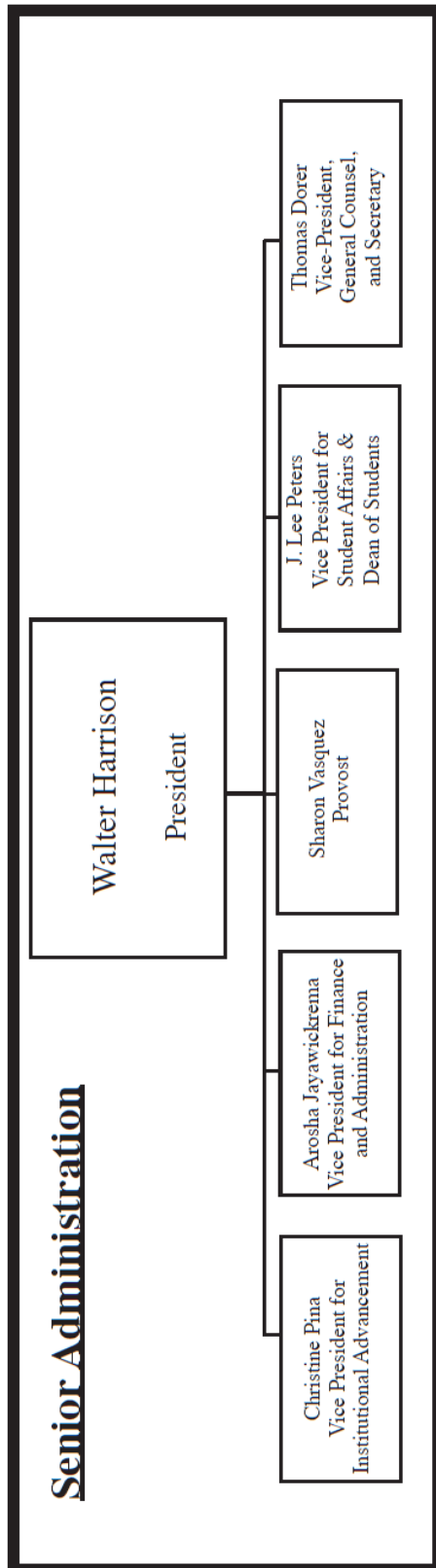


Data note: Race and ethnicity categories mirror reporting requirements for the National Center for Educational Statistics (NCES).

Minority Faculty data includes all race and ethnicities excluding those that identified as white as well as those for whom no ethnicity was recorded (unknown and/or no reply).

# ORGANIZATIONAL CHARTS

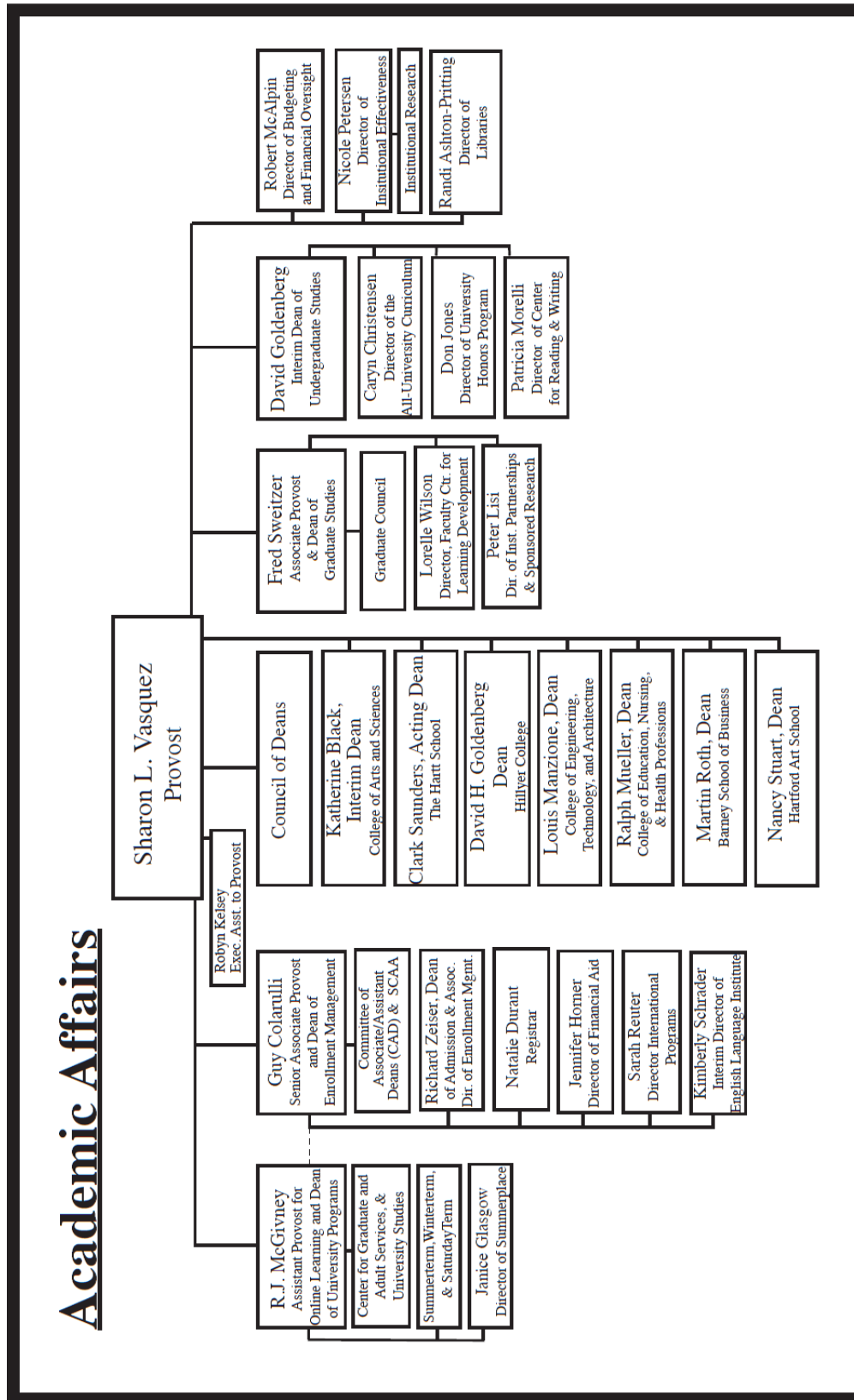
## Senior Administration



September 1, 2014

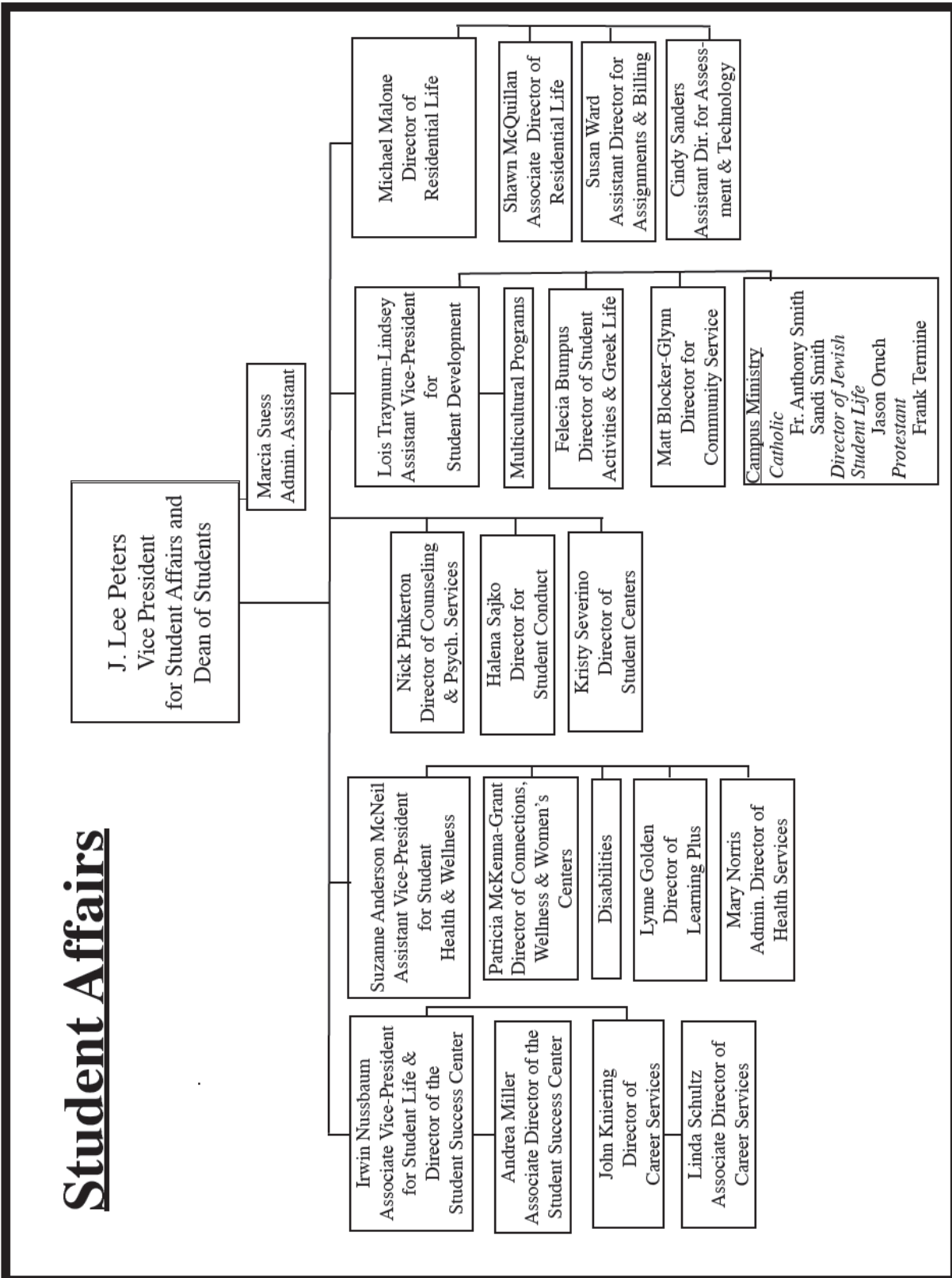
# ORGANIZATIONAL CHARTS

## Academic Affairs



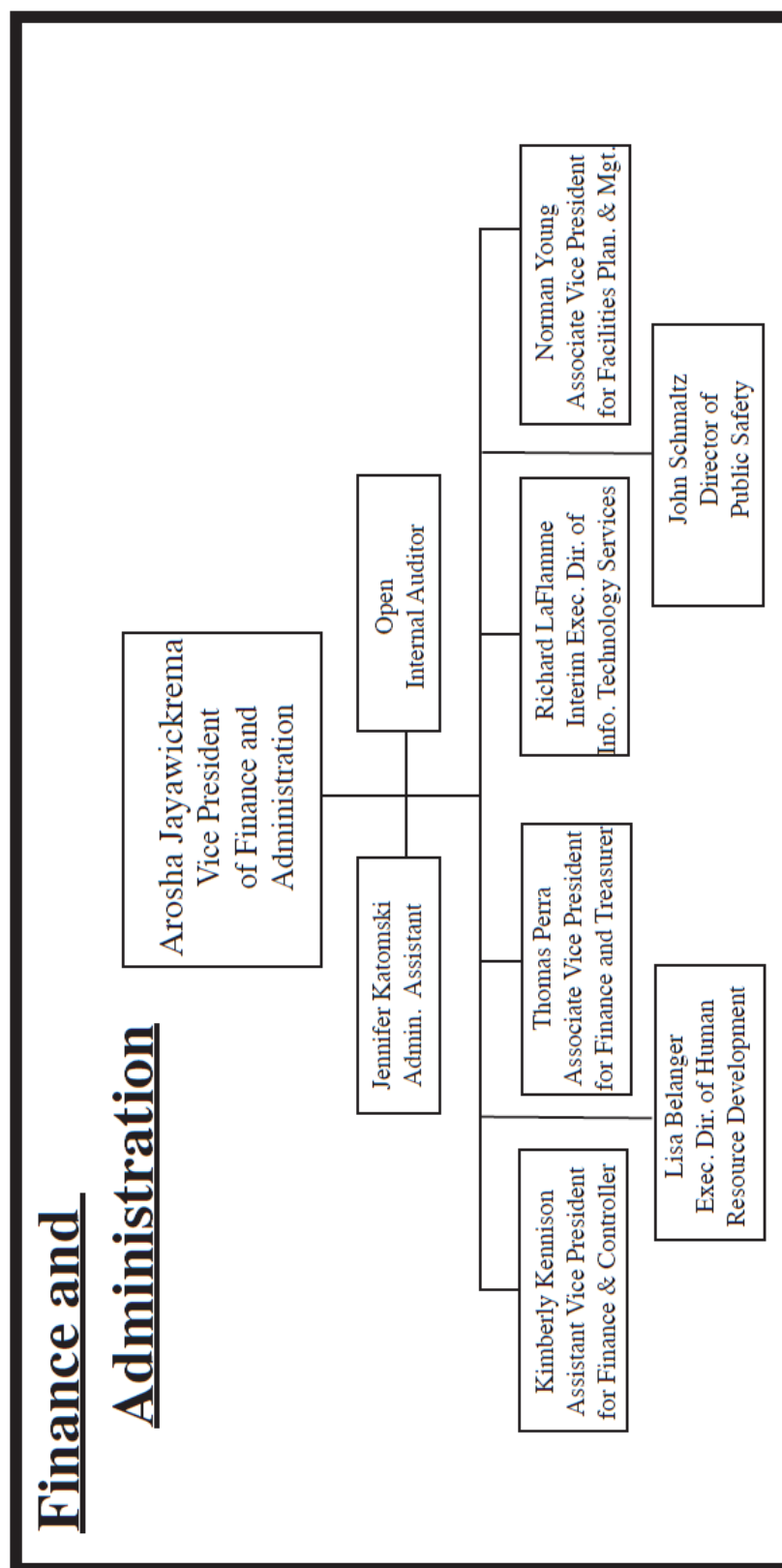
# ORGANIZATIONAL CHARTS

## Student Affairs



# ORGANIZATIONAL CHARTS

## Finance and Administration



## Institutional Advancement



# ORGANIZATIONAL CHARTS

## Secretary of the University

